

# MACROMYCETES IN THE “GHEORGHE SĂLĂGEANU” COLLECTION (ORDER POLYPORALES)

Daniela BOTOȘ\*

**Key words:** macromycetes, mycetoepixilophyta, mycetoendoxilophyta, mycetogeophyta saprophytica.

## Introduction

In the year 2005, the Herbarium of the Natural Science Museum from Târgu-Mureș enriched with a new collection, bought from Professor Gheorghe Sălăgeanu. It contains 650 species of macromycetes. These represent more than half from the species ever found in Romania. The macromycetes are represented by fruit-bodies in different forms and colours, preserved by drying. The species were published in „*Determinator pentru recunoașterea ciupercilor comestibile, necomestibile și otrăvitoare din România*”, which issued in 1985, at the Ceres Publishing House, which won a Romanian Academy prize as the best contribution in this research field.

The biologist Prof. Dr. Gheorghe Sălăgeanu worked with the „Ovidius” University Constanța.

## Material and Methods

This work presents a part of the collection (67 species of macromycetes).

The 172 pieces were collected and determined by Sălăgeanu.

The biological forms were taken from „*Determinator pentru recunoașterea ciupercilor comestibile, necomestibile și otrăvitoare din România*” (3).

The classification of the macromycetes and the updating of the nomenclature of some species was made according to „*Catalogue of life-2008 Annual Checklist*” (5), *Index Fungorum* (6) and *Myco Bank* (7).

## Results and Discussion

The 172 macromycetes presented in this work belong to 14 families, 46 genres and 67 species.

These all were found in Romania, in the districts: Alba, Arad, Bihor, Bistrița-Năsăud, Caraș-Severin, Cluj, Constanța, Maramureș, Satu-Mare and Vrancea, collected between 1954-1976. Most of the species belong to the family Polyporaceae (29) and Fomitopsidaceae (6) (fig. 1).

The analysis of the biological forms emphasizes the domination of the mycetoepixilophyta (28,42%), followed by mycetoendoxilophyta-mycetoepixilophyta (23,34%) (fig. 3).

From the edible point of view, the majority of the species cannot be eaten (60 species-90%) and 7 of them (10%) are edible at a minimum value (fig. 2).

One of the species presented here, *Laricifomes officinalis* is rare in Europe.

## Localities

Alba district: Vidolm, Colțul Roșu, Arieșului Valley.

Arad district: Groșii Noi – Lipova.

Bihor district: Stâna de Vale, Iadului Valley.

Bistrița – Năsăud district: Rodnei Mountains: Vinului Valley, Corongiș Peak.

Caraș – Severin district: Semenicului Mountains, Trei Ape.

Cluj district: Băișoara: Gilăului Mountains, Buscat Top.

Cluj – Napoca: Someșului riverside, Someșului Mic riverside; Gheorgheni district, Galicer Hill, Fântâna lui Bilașcu; Baciului Forest, Hoia Forest, Mănăstur Fotest, Mount Vlădeasa,

---

\* Muzeul de Științele Naturii Tg. Mureș.

Răcadului Valley; Someșul Cald, Gilău; Someșul Mic; Plecica Valley: Coasta Mare, Făget.  
Constanța district: Constanța; Cernavodă Bridge.  
Maramureș district: Lăpușului Mountains, Văratec Peak.  
Vrancea district: Vrancei Mountains, Soveja.

## Conclusions

The collection has an important value, first of all, because it emphasizes a part of the patrimony of our museum, secondly, it completes the knowledge concerning the ecology and corology of some macromycetes from Romania and finally, because of the age of some species and the collector's notoriousness.

## Checklist of macromycetes species (in alphabetical order)

### *Fam. Albatrelaceae*

#### *Albatrellus confluens* (Alb. & Schwein) Kotl. & Pouzar

Maramureș district: on the wet soil, through coniferous forests of Lăpușului Mountains, under Văratec Peak; Gs; 16 IX 1964; HMș 564 under *Scutiger confluens* (A. et S. ex Fr.) Bond. et Sing.; 4 ex.

#### *Albatrellus cristatus* (Schaeff.) Kotl. & Pouzar

Caraș Severin district: on the wet soil, into deciduous and coniferous forests of Semenicului Mountains, at Trei Ape; Gs; 3 IX 1960; HMș 565 under *Scutiger cristatus* (Pers. ex Fr.) Bond. et Sing.; 2 ex.

#### *Albatrellus ovinus* (Schaeff.) Kotl. & Pouzar

Cluj district: in big clusters, on the wet soil, into coniferous forests (pine forests), at Băișoara, in Gilăului Mountains; Gs; 30 VIII 1959; HMș 563 under *Scutiger ovinus* (Schff. ex Fr.) Murr.; 2 ex.

#### *Scutiger oregonensis* Murrill

Bistrița Năsăud district: on the wet soil, in the deciduous and coniferous forests, at Vinului Valley from Rodnei Mountains; Gs; 28 IX 1962; HMș 562 under *Scutiger pes-caprae* (Pers. ex Fr.) Bond. et Sing.; 2 ex.

### *Fam. Atheliaceae*

#### *Plicaturopsis crispa* (Pers.) D. A. Reid.

Bistrița Năsăud district: on decaying beech tree, among moss, in the beech and pine forests, at Vinului Valley from Rodnei Mountains; EPx; 1 XI 1964; HMș 552 under *P. crispa* (Pers. ex Fr.) Reid.; 5 ex.

### *Fam. Boreostereaceae*

#### *Veluticeps abietina* (Pers.) Hjorstam & Telleria

Bistrița Năsăud district: on the fallen trunks of *Picea excelsa*, in Rodnei Mountains, at Vinului Valley; EPx; 14 IX 1965; HMș 497 under *Hymenochaete abietina* (Pers.) Lév.; 2 ex.

### *Fam. Corticiaceae*

#### *Cytidia salicina* (Fr.) Burt.

Cluj district: on the branches and trunks of *Salix*, in the riverside of the Someș river, at Cluj-Napoca; EPx; 2 IX 1960; HMș 551; 1 ex.

#### *Dendrothele acerina* (Pers.) P. A. Lemke

Cluj district: on the trunk bark of *Acer campestre*, in Baciului Forest, near Cluj-Napoca; EPx; 18 X 1956; HMș 491 under *Aleurodiscus acerinus* (Pers. ex Fr.) v. Hoehm. et Lit., 4 ex.

### *Fam. Cyphellaceae*

#### *Sarcodontia crocea* (Schwein.) Kotl.

Cluj district: parasite on fruit-trees, especially on apple trunks, in gardens and orchards, at

Cluj-Napoca; Ex; 30 VIII 1956; HMş 536 under *S. crocea* (Fr.) Kotlaba; 2 ex.

**Fam. Fomitopsidaceae**

***Daedalea quercina* (L.) Pers.**

Cluj district: on the Quercus tree, in Hoia Forest from Cluj-Napoca; Ex-EPx; 14 VIII 1954; HMş 621 under *D. quercina* L.ex Fr.; 1 ex.

***Fomitopsis pinicola* (Sw.) P. Karst.**

Cluj district: on the deciduous and coniferous tree, at Băișoara from Gilăului Mountains; Ex-EPx; 19 IX 1958; HMş 583 under *F. pinicola* (Sow. ex Fr.) Karst.; 1 ex.

***Fomitopsis rosea* (Alb. ex Schwein.) P. Karst.**

Bistrița Năsăud district: on the coniferous tree, in Rodnei Mountains from Vinului Valley; Ex-EPx; 28 IX 1962; HMş 580 under *F. rosea* (A. et S. ex Fr.) Karst.; 1 ex.

***Laricifomes officinalis* (Vill.) Kotl. & Pouzar**

Alba district: on larch tree trunks (*Larix decidua*), in as. Laricetum deciduae, under Colțul Roșu, on the Arieșului Valley, at Vidolm; Ex; 30 IX 1966; HMş 581 under *Fomitopsis officinalis* (Vill.) Bond. et Sing.; 1 ex.

***Piptoporus betulinus* (Bull.)P. Karst.**

Cluj district: on alive trunks, stumps and branches of birch tree, at Plecica Valley and at Făget, from Cluj-Napoca; Ex; 19 VIII 1960; HMş 575 under *P. betulinus* (Bull. ex Fr.) Karst.; 1 ex.

***Postia caesia* (Schrad.) P. Karst.**

Bistrița-Năsăud district: on decaying trees, in the coniferous forests of Rodnei Mountains from Vinului Valley; EPx; 28 IX 1962; HMş 568 under *Tyromyces caesius* (Schrad. ex Fr.) Murr.; 3 ex.

**Fam. Ganodermataceae**

***Ganoderma applanatum* (Pers.) Pat.**

Bistrița Năsăud district: in multilayered clusters, on the deciduous trees, rarely on the coniferous tree, at Rodnei Mountains from Vinului Valley; Ex-EPx; 28 IX 1962; HMş 598 under *G. applanatum* (Pers. ex Walbr.) Pat.; 2 ex.

***Ganoderma lucidum* (Curtis) P. Karst.**

Cluj district: on the roots and at the base of oak tree trunks, in the Quercus forests, at Hoia Forest from Cluj-Napoca; Ex-EPx; 16 IX 1955; HMş 599 under *G. lucidum* (Leyss. ex Fr.) Karst.; 2 ex.

**Fam. Gloeophyllaceae**

***Gloeophyllum abietinum* (Bull.) P. Karst.**

Caraș Severin district: on the coniferous trees, at Trei Ape from Semenicului Mountains; EPx; 3 IX 1960; HMş 626 under *G. abietinum* (Bull. ex Fr.) Karst.; 2 ex.

***Gloeophyllum odoratum* (Wulfen) Imazeki**

Bistrița-Năsăud district: in multilayered clusters, on the coniferous tree, especially in the fir and spruce fir forests, in Rodnei Mountains, under Corongiș Peak, at Vinului Valley; Ex-EPx; 19 IX 1963; HMş 577 under *Anisomyces odoratus* (Wulfen. ex Fr.) Pil.; 2 ex.

***Gloeophyllum sepiarium* (Wulfen) P. Karst.**

Cluj district: on Picea excelsa stumps and knots, in Gilăului Mountains, at Băișoara, under Buscat Peak; EPx; 14 V 1957; HMş 625 under *G. sepiarium* (Wulf. Ex Fr.) Karst.; 3 ex.

**Fam. Hapalopilaceae**

***Bjerkandera adusta* (Willd.) P. Karst.**

Cluj district: on decaying trees, in beech and hornbeam forests, at Făgetul Clujului; EPx; 20 IX 1956, HMş 569 under *B. adusta* (Willd.ex Fr.) Karst.; 5 ex.

***Climacocystis borealis* (Fr.) Kotl. & Pouzar**

Cluj district: on coniferous trees, stumps and living trunks, in Gilăului Mountains, at Băișoara; Ex-EPx; 5 X 1962; HMş 570 under *Spongipellis borealis* (Fr.) Pat.; 2 ex.

***Ischnoderma resinosum* (Schrad.) P. Karst.**

Bistrița Năsăud district: in multilayered clusters, on the roots, living trunks, knots and stumps, in Rodnei Mountains, at Vinului Valley; Ex-EPx; 18 IX 1963; HMş 576 under *I. resinosum* (Fr.) Karst.; 2 ex.

***Hapalopilus nidulans* (Fr.) P. Karst.**

Satu Mare district: on decaying deciduous tree, in the oak forest, at Săuca village; EPx; 8 VIII 1960; HMş 574 under *H. nidulans* (Fr.) Karst.; 2 ex.

***Spongipellis spumeus* (Sowerby) Pat.**

Cluj district: parasite on the *Pyrus* trunk, in an orchard of Gheorgheni district, at Cluj-Napoca; Ex; 30 VIII 1960; HMş 571 under *S. spumeus* (Sow. ex Fr.) Pat.; 1 ex.

**Fam. Meripilaceae**

***Abortiporus biennis* (Bull.) Singer**

Cluj district: on the roots and trunks of *Populus tremula*, in Plecica Valley from Cluj-Napoca; Ex-EPx, 26 IX 1957; HMş 617 under *A. biennis* (Bull. ex Fr.) Bond. et Sing.; 2 ex.

***Grifola frondosa* (Dicks.) Gray**

Cluj district: parasite on the roots and base of the blocks of *Quercus*, in the deciduous forests, on the Galicer hill from Cluj-Napoca; Ex-EPx; 2 X 1959; HMş 561 under *Polypilus frondosus* (Dicks. ex Fr.) Karst.; 1 ex.

***Meripilus giganteus* (Pers.) P. Karst.**

Bistrița-Năsăud district: on roots, trunks and knots, especially on beech trees, in Rodnei Mountains, at Vinului Valley; Ex-EPx; without date; HMş 559 under *Polypilus giganteus* (Pers. ex Fr.) Donk.; 1 ex.

***Rigidoporus ulmarius* (Sowerby) Imazeki**

Cluj district: on the *Ulmus* trunk, in the Babeș park from Cluj-Napoca; Ex; 13 IX 1965; HMş 584 under *Fomitopsis ulmaria* (Sow. ex Fr.) Bond. et Sing.; 1 ex.

**Fam. Meruliaceae**

***Chondrostereum purpureum* (Pers.) Pouzar**

Cluj district: on deciduous tree, especially birch tree, on stumps and knots, in Plecica Valley, at Făget, from Cluj-Napoca; EPx; 12 X 1960; HMş 520 under *Stereum purpureum* Pers.; 8 ex.

***Gloeoporus dichrous* (Fr.) Bres.**

Satu Mare district: on decaying deciduous trees, in the oak forest, from the periphery of Săuca village; EPx; 26 VII 1957; HMş 572; 4 ex.

***Merulius tremellosus* Schrad.**

Cluj district: on decaying deciduous trees, at Cluj-Napoca, in Făget; Ex-EPx; 12 X 1956; HMş 554 under *M. tremellosus* Schrad. ex Fr.; 3 ex.

***Phlebia radiata* Fr.**

Bistrița-Năsăud district: on deciduous and coniferous trees, in the beech and spruce fir forests, at Vinului Valley, in Rodnei Mountains; EPx; 17 IX 1963; HMş 553 under *P. aurantiaca* (Sow.) Karst.; 4 ex.

***Phlebia rufa* (Pers.) M. P. Christ.**

Cluj district: on deciduous trees, in the beech and hornbeam forests, at Fântâna lui Bilașcu; EPx; 15 X 1958; HMş 555 under *Merulius rufus* Pers.; 2 ex.

**Fam. Phanerochaetaceae**

***Lopharia spadicea* (Pers.) Boidin**

Bistrița Năsăud district: on deciduous and coniferous trees, in Rodnei Mountains, at Vinului Valley; EPx; 1 XI 1964; HMş 522 under *Stereum spadiceum* (Pers.) Bres.; 5 ex.

***Phlebiopsis gigantea* (Fr.) Jülich**

Bistrița Năsăud district: on coniferous trees, in Rodnei Mountains, at Vinului Valley; EPx; 30 X 1964; HMş 493 under *Peniophora gigantea* (Fr.) Mass.; 1 ex.

**Fam. Podoscyphaceae**

***Cotylidia pannosa* (Sowerby) D. A. Reid.**

Bistrița Năsăud district: on the wet soil, in the beech and coniferous forests, at Vinului Valley; Gs; 29 VIII 1964; HMş 498 under *Bresadolina pallida* (Pers.) Brinkm.; 2 ex.

**Fam. Polyporaceae**

***Cerrena unicolor* (Bull.) Murrill**

Cluj district: in multilayered clusters, on Quercus, Carpinus and Fagus forest, in Făgetul Clujului; Ex – EPx; 30 IX 1959; HMş 609 under *C. unicolor* (Bull. ex Fr.) Murr.; 5 ex.

***Daedaleopsis confragosa* (Bolton) J. Schröt.**

Cluj district: parasite and saprophyte, on deciduous tree trunks and stumps, especially on Salix and Fagus, at Făget-Cluj-Napoca; Ex-EPx; 10 IX 1957; HMş 622 under *D. confragosa* (Bolt. ex Fr.) Schroet.; 1 ex.

Arad district: on decaying deciduous trees, in Querceto-Carpinetum, at Groșii Noi-Lipova; 6 XI 1956; HMş 623 under *Daedalea confragosa* var. *tricolor* (Bull. ex Fr.) Bond.; 2 ex.

***Datronia mollis* (Sommerf.) Donk**

Bistrița Năsăud district: on putrid trees of Fagus, in the forest of Rodnei Mountains, under the Corongiș Peak; EPx; 14 IX 1965; HMş 615 under *Antrodia mollis* (Somm. ex Fr.) Karst.; 1 ex.

***Fomes fomentarius* (L.) J. J. Kickx**

Bistrița Năsăud district: on living or alive trunks of Fagus sylvatica, in beech forests, at Vinului Valley from Rodnei Mountains; Ex; 30 VIII 1964; HMş 579 under *F. fomentarius* (L. ex Fr.) Gill., 1 ex.

***Funalia trogii* (Berk.) Bondartsev & Singer**

Cluj district: on decaying coniferous trees, at Someșul Cald, nearby Gilău; Ex; 13 VIII 1959; HMş 616 under *F. trogii* (Berk.) Bond. et Sing.; 5 ex.

***Laetiporus sulphureus* (Bull.) Murrill**

Constanța district: parasite on trunks of Tilia, Acer and Robinia, in Dobrogea, at Constanța; Ex; 12 IX 1975; HMş 567 under *L. sulphureus* (Bull. ex Fr.) Bond. et Sing.; 1 ex.

***Lentinus strigosus* (Schwein.) Fr.**

Cluj district: in multilayered clusters, on the decaying deciduous trees, at Plecica Valley, nearby Cluj-Napoca; EPx; 12 IX 1958, HMş 639 under *Panus rudis* Fr.; 5 ex.

***Lentinus suavissimus* Fr.**

Cluj district: on putrid trees, in Someșului Mic waterside; EPx; 2 IX 1960; HMş 640 under *Panus suavissimus* (Fr.) Singer; 1 ex.

***Lentinus tigrinus* (Bull.) Fr.**

Cluj district: on deciduous trees, especially on Salix and Populus, at Plecica Valley, nearby Cluj-Napoca; EPx; 12 IX 1958; HMş 638 under *Panus tigrinus* (Bull. ex Fr.) Sing.; 2 ex.

***Lenzites betulina* (L.) Fr.**

Cluj district: on deciduous trees, especially Betula, at Făget, Cluj-Napoca; EPx; 24 VIII 1959; HMş 624 under *L. betulina* (L. ex Fr.) Fr.; 5 ex.

***Neolentinus lepideus* (Fr.) Redhead & Ginns**

Bistrița Năsăud district: on coniferous trees, in Rodnei Mountains, under the Corongiș Peak, at Vinului Valley; EPx; 31 X 1964; HMş 637 under *Lentinus lepideus* (Fr.) Fr.; 1 ex.

***Phaeolus schweinitzii* (Fr.) Pat.**

Cluj district: on the Picea roots, in coniferous forests, on Mount Vlădeasa; Ex; 20 VIII 1960; HMş 585, 3 ex.

***Podofomes corrugis* (Fr.) Pouzar**

Vrancea district: on coniferous roots, especially Abies alba, in Vrancea Mountains, at Soveja; Ex; 24 IX 1976, HMş 578 under *Pelloporus corrugis* (Fr.) Bond. et Sing.; 1 ex.

***Polyporus arcularius* (Batsch) Fr.**

Satu Mare district: on deciduous trees, especially on fallen branches and little branches, in Quercus forests, at Săuca village; EPx; 26 VII 1957; HMş 602 under *P. arcularius* Batsch ex Fr.; 5 ex.

Cluj district: on the decaying deciduous trees, in Hoia Forest, at Cluj-Napoca; EPx; 23 VI 1957; HMş 601; under *P. alveolarius* (DC.) Bond. et Sing.; 2 ex.

***Polyporus badius* (Pers.) Schwein.**

Cluj: parasite and saprophyte, on deciduous trees, especially *Fagus*, *Salix*, at Plecica Valley and under the Coasta Mare, at Cluj-Napoca; Ex; 3 IX 1959; HMş 606 under *P. picipes* Fr.; 2 ex.

***Polyporus brumalis* (Pers.) Fr.**

Bistrița Năsăud district: on deciduous trees, especially on the fallen branches, at Vinului Valley, in Rodnei Mountains; EPx; 1 X 1964; HMş 600 under *P. brumalis* Pers. ex Fr.; 3 ex.

***Polyporus leptcephalus* (Jacq.) Fr.**

Bistrița Năsăud district: on deciduous trees, at Vinului Valley, under the Corongiș Peak of Rodnei Mountains; Ex-EPx; 3 IX 1964; HMş 605 under *P. varius* var. *numularius* Bull. ex Fr., 3 ex.

***Polyporus melanopus* (Pers.) Fr.**

Bistrița Năsăud district: parasite on the roots of beech trees, at Vinului Valley from Rodnei Mountains; Ex-EPx; 29 VIII 1964; HMş 607 under *P. melanopus* Schw. ex Fr.; 1 ex.

***Polyporus varius* (Pers.) Fr.**

Cluj district: on deciduous trees, in the beech and hornbeam forests, under the Coasta Mare, at Făget, from Cluj-Napoca; Ex-EPx; 20 X 1962; HMş 604 under *P. varius* Pers. ex Fr.; 1 ex.

***Polyporus squamosus* (Huds.) Fr.**

Bistrița Năsăud district: parasite and saprophyte, on the alive trunks and decaying trees, especially *Acer*, at Vinului Valley from Rodnei Mountains; Ex-EPx; 16 VI 1962; HMş 603 under *P. squamosus* Mich. ex Fr., 1 ex.

***Polyporus umbellatus* (Pers.) Fr.**

Cluj district: on the stumps and at the base of beech trees, oak trees and hornbeam trees, in Mănăştur Forest and Galicer Hill, at Făgetul Clujului; Ex-EPx; 4 IX 1965; HMş 560 under *Polypilus umbellatus* (Pers. ex Fr.) Bond. et Sing.; 1 ex.

***Pycnoporus cinnabarinus* (Jacq.) Fr.**

Bistrița Năsăud: on deciduous trunks, especially beech trees and sweet cherry trees, at Vinului Valley, in Rodnei Mountains; Ex-EPx; 28 IX 1962, HMş 608 under *P. cinnabarinus* (Jacq. ex Fr.) Karst.; 2 ex.

***Skeletocutis amorphia* (Fr.) Kotl. & Pouzar**

Bihor district: on coniferous trees, at Stâna de Vale, at Iadului Valley; EPx; 11 IX 1960; HMş 573 under *Gloeoporus amorphus* (Fr.) Clem. et Shear; 5 ex.

***Trametes gibbosa* (Pers.) Fr.**

Constanța district: on coniferous trunks, especially *Salix*, at the waterside of Danube river, from Cernavodă Bridge; EPx; 15 XI 1969; HMş 614 under *Pseudotrametes gibbosa* (Pers.) Bond. et Sing.; 1 ex.

***Trametes hirsuta* (Wulfen) Pilát**

Bistrița Năsăud district: on deciduous trees, stumps and knots, in multilayered clusters, in the forests of Vinului Valley, from Rodnei Mountains; EPx; without date; HMş 611 under *Coriolus hirsutus* (Wulf. ex Fr.) Quél.; 5 ex.

***Trametes pubescens* (Schumach.) Pilát**

Cluj district: on *Populus tremula*, at Făget, on Plecica Valley, nearby Cluj-Napoca; Ex-EPx; 25 IX 1955; HMş 612 under *Coriolus pubescens* (Schum. ex Fr.) Quél.; 2 ex.

***Trametes suaveolens* (L.) Fr.**

Cluj district: on deciduous trunks, especially on *Salix*, *Populus*, in the riverside coppice of Someșul Mic waterside, at Cluj-Napoca; Ex-EPx; 24 XI 1963; HMş 613 under *T. suaveolens* (L. ex Fr.) Fr.; 1 ex.

***Trametes versicolor* (L.) Lloyd**

Cluj district: on stumps and knots, in multilayered clusters, at Făgetul Clujului; EPx; 29 VIII 1957; HMş 610 under *Coriolus versicolor* (L. ex Fr.) Quél.; 5 ex.

***Trichaptum abietinum* (Dicks.) Ryvarden**

Cluj district: on decaying trees (*Picea*), in coniferous forests from Gilăului Mountains, at Băișoara;

EPx; 26 V 1956; HMş 620 under *Hirschioporus abietinus* (Dicks. ex Fr.) Donk.; 6 ex.

***Trichaptum biforme* (Fr.) Ryvarden**

Arad district: on deciduous trees, in multilayered clusters, on decaying stumps, at Groşii Noi-Lipova; EPx-EPx; 6 X 1956; HMş 619 under *Hirschioporus pargamensis* (Fr.) Bond. et Sing.; 6 ex.

**REFERENCES**

1. Bontea, Vera, 1985, *Ciuperci parazite şi saprofite din România*, vol. I-II, Editura Academiei R.S.R., Bucureşti.
2. Eliade, Eugenia; 1965, *Conspectul macromicetelor din România*, Lucrările Grădinii Botanice, Bucureşti.
3. Sălăgeanu, Gh., Sălăgeanu, Anișoara, 1995, *Determinator pentru recunoaşterea ciupercilor comestibile, necomestibile şi otrăvitoare din România*, Editura Ceres, Bucureşti.
4. Sârbu, Anca et alii, 2003, *Ghid pentru identificarea importanţelor arii de protecţie şi conservare a plantelor din România*, Editura alo, Bucureşti!, Bucureşti.
- 5.\*\*\*Catalogue of life: 2008 Annual Checklist <http://www.catalogueoflife.org>.
- 6 \*\*\*Index Fungorum: <http://www.indexfungorum.org>.
- 7.\*\*\*Mycobank: <http://www.mycobank.org>.
8. Pop, Adriana, Tănase, Cătălin, 2003, Mapping of Macromycetes-Pilot series-in Romania - <http://www.wsl.ch/eccf/newsletter13.pdf>.

**Abbreviations**

Ex. – number of specimens

HMş – the Herbarium of the Natural Science Museum from Târgu-Mureş

EPx – mycetoepixilophyta

Ex – mycetoendoxilophyta

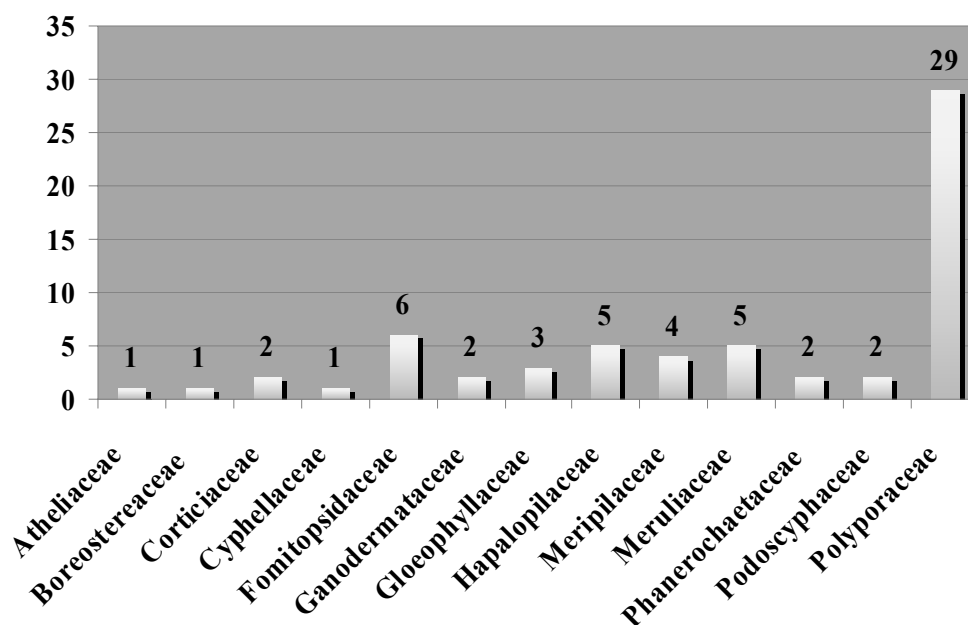
Gs - mycetogeophyta saprophytica

**Marks**

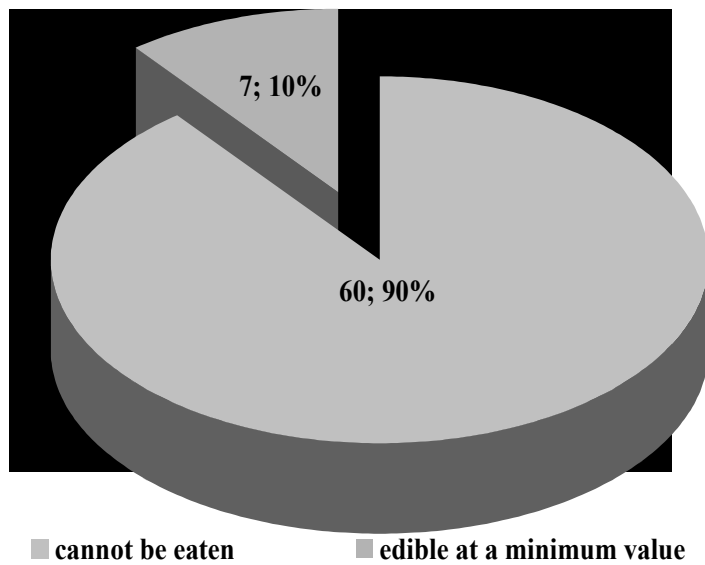
☉ = species edible at a minimum value

Without mark = species cannot be eaten

**Fig. 1. The distribution into families of macromycetes**



**Fig. 2. The distribution of the macromycetes from the edible point of view**



**Fig. 3. The spectrum of the bioforms of macromycetes**

