

PROTECTIVE ARCHEOLOGICAL EXCAVATIONS ON THE SITE IN PODUMKA NEAR ORLOVAT

Snezana Marinković

Key words: Serbia, Zrenjanin, bronze age

Based on the reconnoiter process of the right bank of the Tamis River on the excavation site between Botos and Orlovat in 2005 another site was discovered - site of Podumka.

The site is located at 1.5 kilometers from Botos, and 5 kilometers from Orlovat. Founded on its archeological activities program, the National Museum in Zrenjanin started the project realization and the archeological excavations for the research of the settlement from the Bronze Age on the site of Podumka.¹

The site is on the right bank of Tamis, on the 15 meters high rafter. It is located on the mildly tilted slope which falls down towards the bank of Tamis and the village road and fields which are vanishing in the direction of Orlovat. In the first phase of excavations three probes were launched. Probe I has the proportions 5 X 5 meters. It is located in the south from so-called pyramid whose peak elevation is 99 meters and which is the highest point in Middle Banat.

Probe I is 100 meters away from the pyramid. It is also 5 to 6 meters away from the rafter. (picture 1).

Probe II is located in the south-west part from the Probe I, it is approximately 7 meters away from it. Its proportions are 4 X 3 meters (picture 2).

Probe III is on the very edge of the coastal rafter with its proportions 4 X 5 meters. Probes are oriented on the north and south. (picture 3).

Topography of the soil consists of contemporary humus that is dark brown, cultivation soil that is light brown and a yellowish bottom. That is the general situation of the deposit of the layers on the site of Podumka. The question whether the location is conditioned by relative proximity of Tamis remains open. Based on the analysis of

¹A skilled team was formed; the head of the excavation was Snezana Marinkovic, curator of the National Museum in Zrenjanin, academician Bogdan Brukner as consultant, Ph. D. Dubravka Nikolic (The Faculty of Philosophy in Belgrade) and students Dusan Marinkovic, Ognjen Dzomba and Dijana Gombos.

the layers on certain places, the cultivation layer was mostly destroyed in all probes by cultivation except in Probe III where the layer is more preserved due to the proximity of the rafter that prevented maximal cultivation. The first layers in probes were consisted of dark thick soil in which fragments of ceramics and animal bones were sporadically found. The depth of the layer is ' roughly between 16 and 30 centimeters. The cultivation layer's (Probes I, II, III) thickness is minimally 35 centimeters up to the maximal 70 centimeters. This is light grey, flour looking and loose soil where everyday activities took place. Interesting situation is in Probe III (its excavation is not over) in which we found a mixture of contemporary and pre-historical humus. Thickness of the contemporary humus in the Probe III is 16 to 30 centimeters, its relative depth is 1.60 meters, and the thickness of the cultivation layer is 60 centimeters. Probe III is the exact example where you can clearly observe geological layers and shows that the settlement had either two phases of residence or it lasted in alluvium.

In the cultivation layer fragments of construction works were discovered in the depth of roughly 0.50 meters with its approximate proportions of 2.5X2.5 meters (Probe I). Significant is the discovery of house mortar with a print of wattled fence. Evidently, the objects in question are not of substantial construction as it is the case in the culture of Vinca and area surrounding river Tisa. This is the example of some sort of cottages of solid built. In Probe I a hole was discovered in which five dishes were found in the depth of 1.6 meters. Near this group of whole dishes some fragments of ceramics were found as well. Consideration of the fact that the group of dishes was found near carbonized tree remnants leads one to think that this part belonged to the kitchen section, actually that it was found at the bottom of the hole - dug out. Judging by the general situation in the Probe I it is possible that the hole with the group of dishes was dug in and that it belongs to the younger phase of residence on this site. In other places (Probes II,III) construction works were not noticed.

Due to excavations in the Probe II the hole was noticed in the depth of 1.32 meters which was dug in the thick layer of lumber and cultivated layer by the profile. A significant number of ceramic fragments was found in the hole that belongs to the same dish as well as the tools made of bones and a stone pound with perforation.

Specific for Probe III are the remains of the bones of large animals. The findings of the dishes are of greater proportions. Typologically speaking this ceramics belongs to the older dishes. The findings of fine smooth ceramics are infrequent.

* * * * *

A two-week campaign brought enough information about the typology of the pottery. The type of transitional ceramics is more frequent and that is the one with smooth surface. The second group is consisted of the pottery of grey even surface, which is rarely brown, with thin walls with ornaments.

In this group of fine pottery also belongs the very important discovery of goblet of smaller proportions, of brown color and soft surface with two handles and ornament in the shape of engraved parallel lines (three). This is the typical example of early stage of Vatin culture which is important for relative chronological inventory of the whole (Probe I) because this is the case of early exarpie.²

Typologically speaking this pots are part of ceramic shapes which were used at Early Bronze Age B2 according to some authors (picture 1)³. The types of Bowie decorated with dots and parallel narrow lines of triangle shape also belong to the group of fine pottery. Analogous examples we find in regions of Gomolav (picture 2)⁴. This is the typical ornament of Kostolac - Kocofeni group.⁵ The fragment with thick walls with wide, net - like motive, stands out; and it is characteristic for Baden culture (Probe I, depth of 70 centimeters), (picture 3)⁶. The fragment with a moonlit ornament with curved lines is characteristic for Verbicioara culture (picture 4)⁷.

Different kinds of pots of brown surface with an ornament below the edge belong to the group of rough pots. On some pots there are warlike ornaments or horizontally drilled handles. The pot with rhomboid slit, brown and black in color, of rough surface with two opposite handles and traces of fire is interesting (Probe I, whole I). Considering the factor of time it belongs to Vatin -Verbicioara cultural complex (picture 1)⁸.

A large pot with rough surface, black in colour, badly fumed with granular structure and with two ribbon like handles and wartlike bumps and ornaments on the

²M. Garasanin, *Praistorija na tlu Srbije Vatinska kultura*, Beograd, 1973, page 150.

³M. Garasanin, *Praistorija jugoslovenskih zemalja Bronzano doba IV Vatinska grupa*, Sarajevo, 1983, page 509.

⁴B. Brukner, *Praistorija Vojvodine Pozni eneolit*, Novi Sad, 1974, page 161.

⁵B. Brukner, *Praistorija Vojvodine Pozni eneolit*, Novi Sad, 1974, page 165.

⁶B. Brukner, *Praistorija Vojvodine Pozni eneolit*, Novi Sad, 1974, page 508, picture 110.

⁷N. Tasic, *Jugoslovensko podunavlje od indoevropske seobe do prodora Skita*, Novi Sad-Beograd, 1983, page 58.

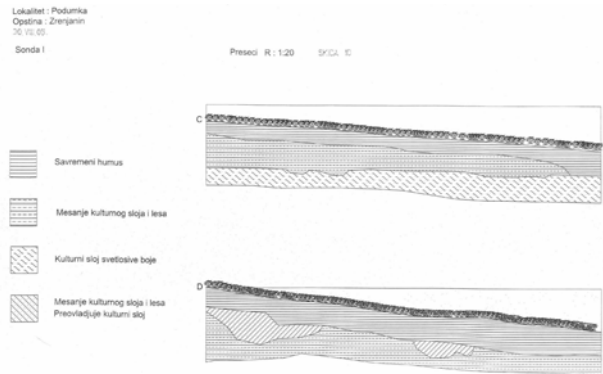
⁸N. Tasic, *Jugoslovensko podunavlje od indoevropske seobe do prodora Skita*, Novi Sad-Beograd, 1983, page 61, picture 21.

edge belongs to the group of kitchen dishes (Probe I, whole I), (picture 2)⁹. As for its typology, it is rather vague. Two conical pots each with only one handle and found next to each other belong to the group of rough pots. They are black in color with traces of soot. These two dishes are particularly interesting, because right under them fish bones were found, which suggests their application (Probe I, whole I), (picture 3, 4). Considering the factor of time they belong to the Early Vatin culture as well as the remaining dishes from Probe I, whole I.

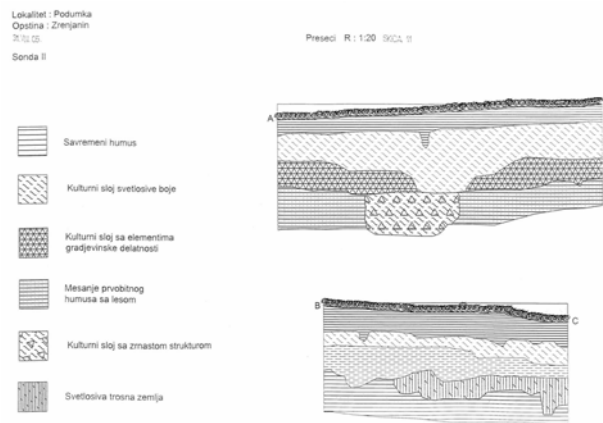
Tools made of bones were rare and those are mainly awls made of bird bones. Tools made of stone are also rare except for a few narrow chisels and stone hatchets. Only one scraper was found. Osteological findings are mainly present in Probe III. Most parts of animal bones generally belong to large ruminants (cattle). Bones of wild animals and fish bones were also discovered. Sea shells appear in smaller degree.

The initial data during these brief excavations gave only basic information about the region and the proof that it belonged to the Early Bronze Age. It is certain that the formation of the settlement was done by the members of Kostolac - Coțofeni phase. The question, whether the ceramic fragments of the Kostolac - Coțofeni phase were brought here or they are actually part of the proof of residence of members from the mentioned group in the region of Podumka, remains open. No difference was noticed in the shades of layers in the cultivated levels, and that would be necessary considering the sudden appearance of vatin materials. The assumption is that the oldest level belongs to the mentioned phase in which groups met and cohabited, and where material of Verbicioara culture was found. The research of the three probes have not given adequate answers about the boundaries of the settlement nor detailed data about possible type of residence. In order to acquire the accurate picture of settlement boundaries and material culture we need to continue excavations that would bring more precise results.

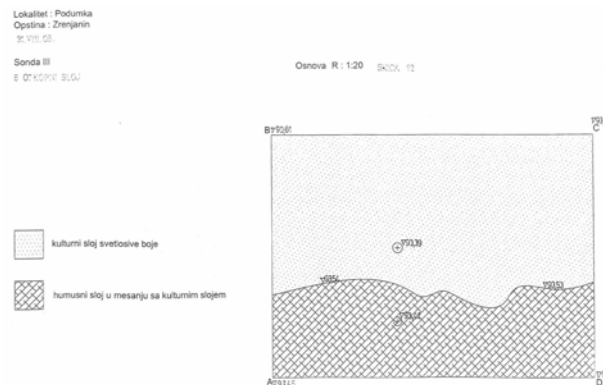
⁹ N. Tasic, *Jugoslovensko podunavlje od indoevropske seobe do prodora Skita*, Novi Sad-Beograd, 1983, page 61, picture 21.



Cross section structure



Cross section structure





1



2

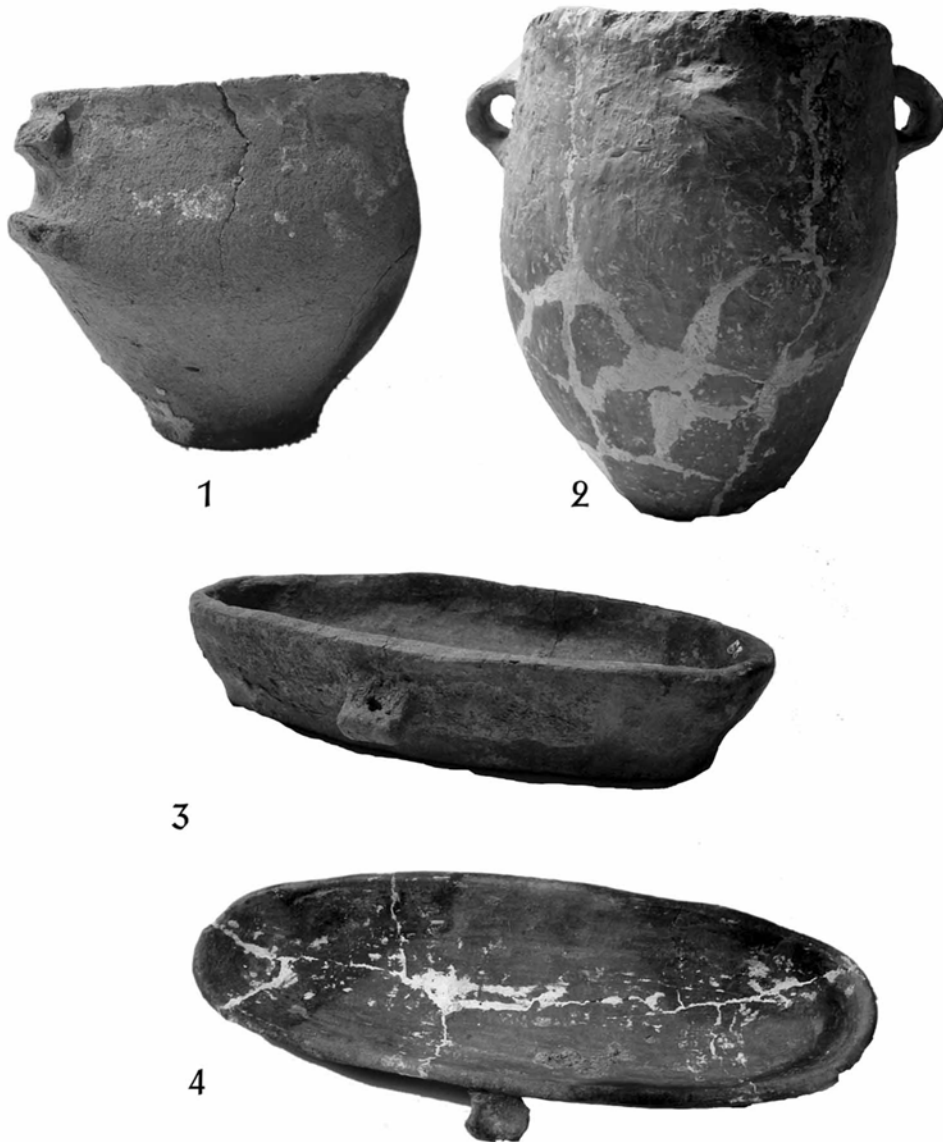


3



4

T II. Pottery belonging to the Early Bronze Age



T III. Pottery belonging to the Early Bronze Age