

Fig 1

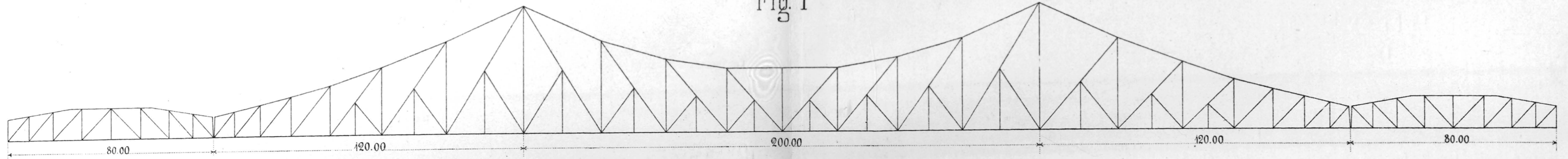


Fig 2

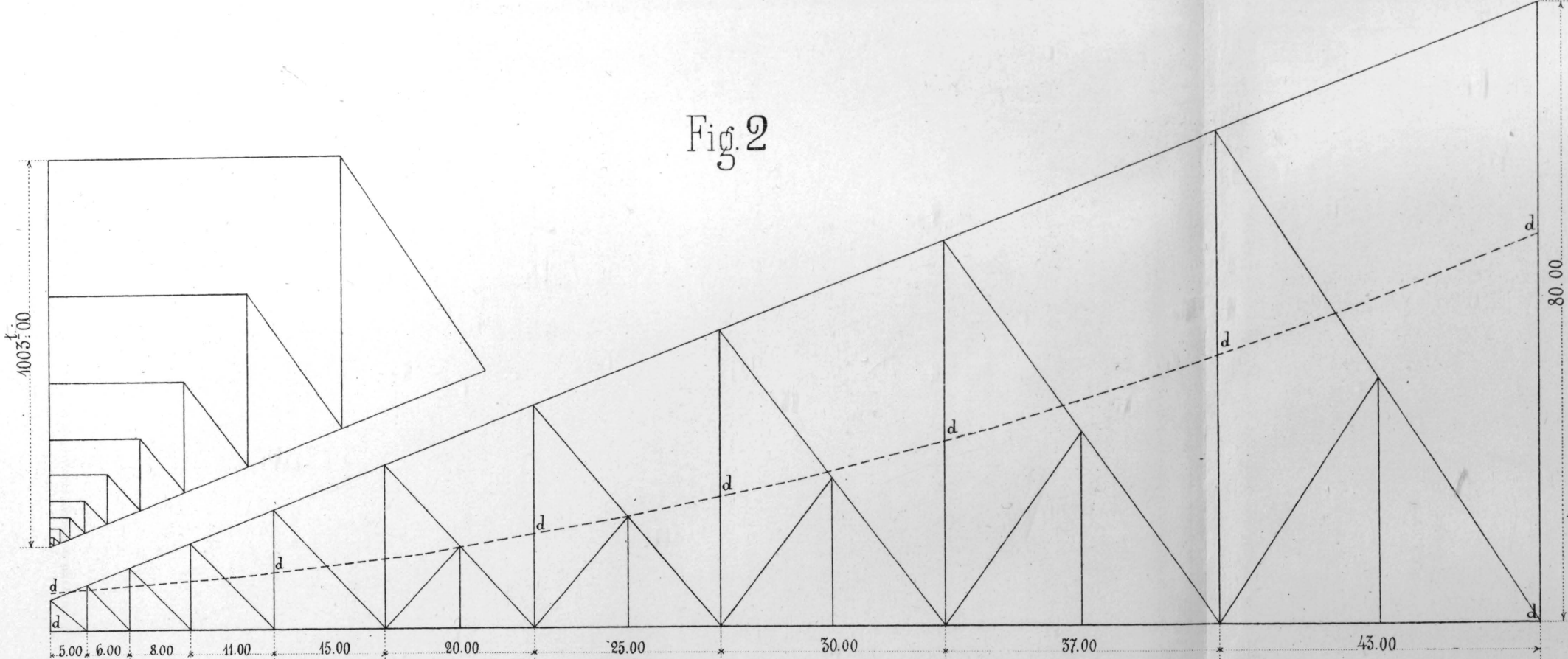


Fig 4

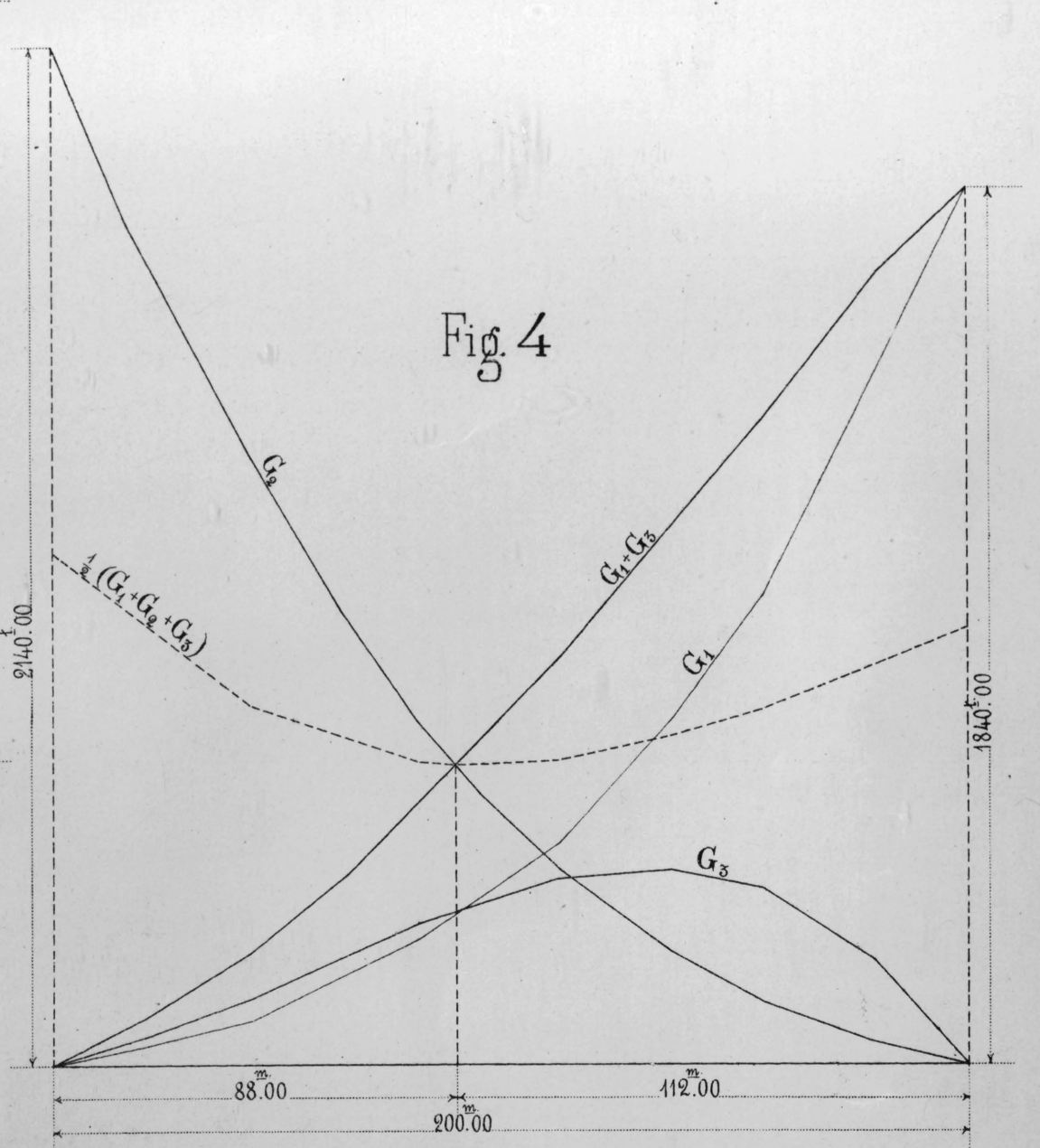


Fig 3

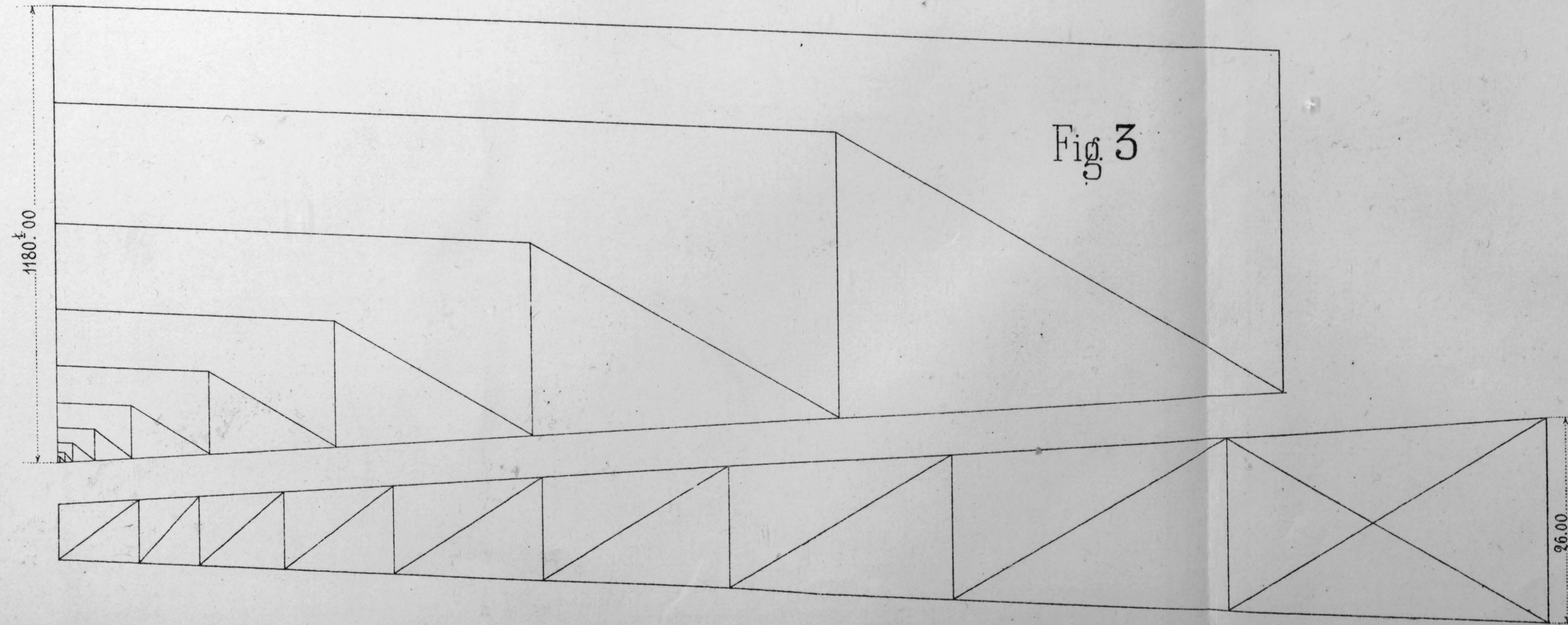
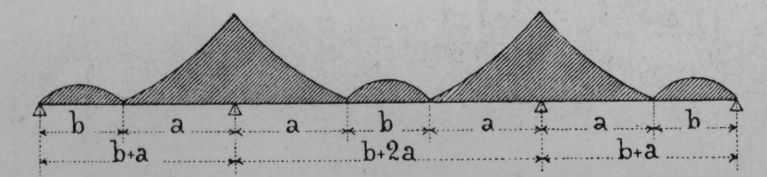
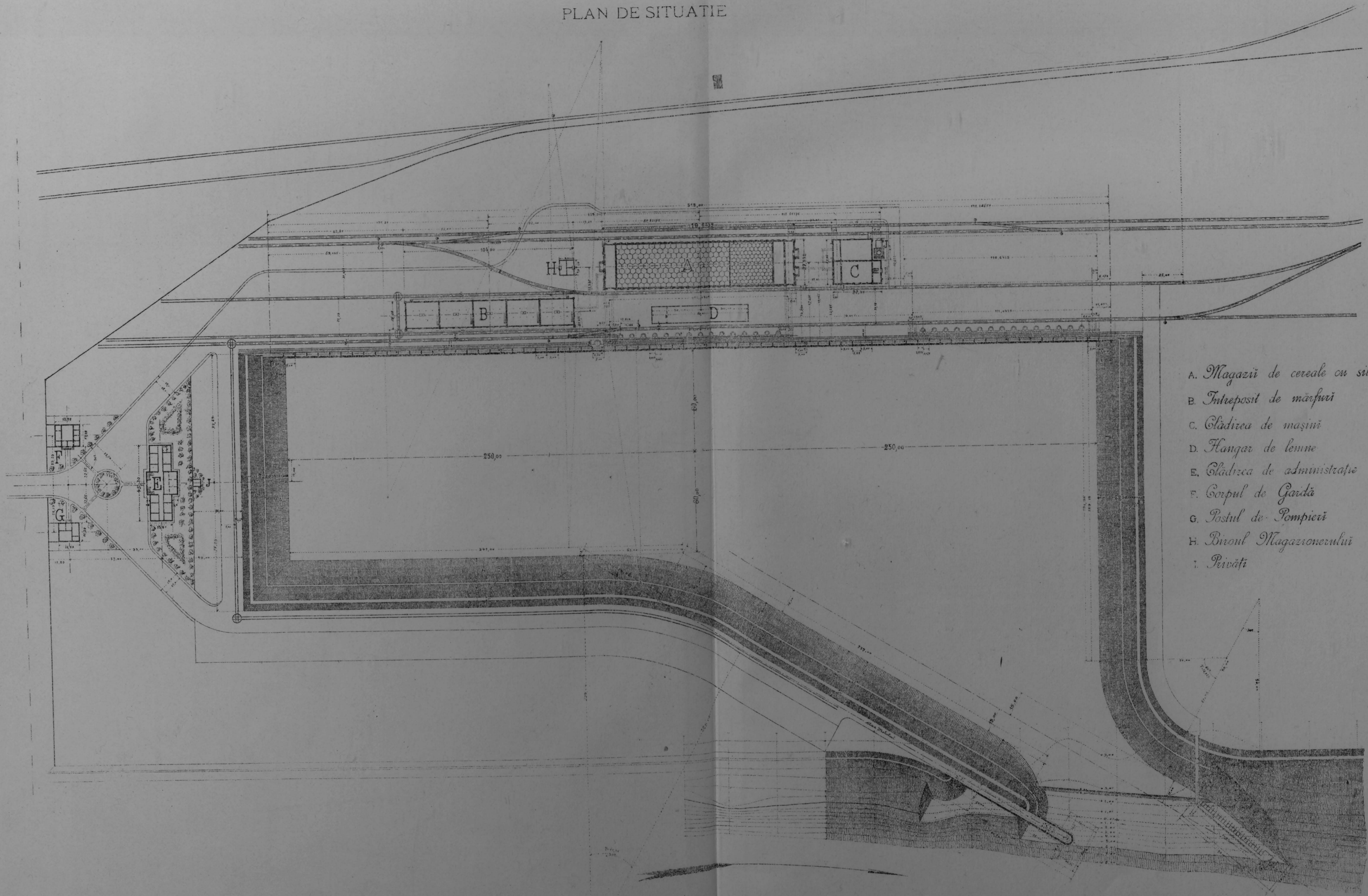


Fig 5





PLAN DE SITUATIE



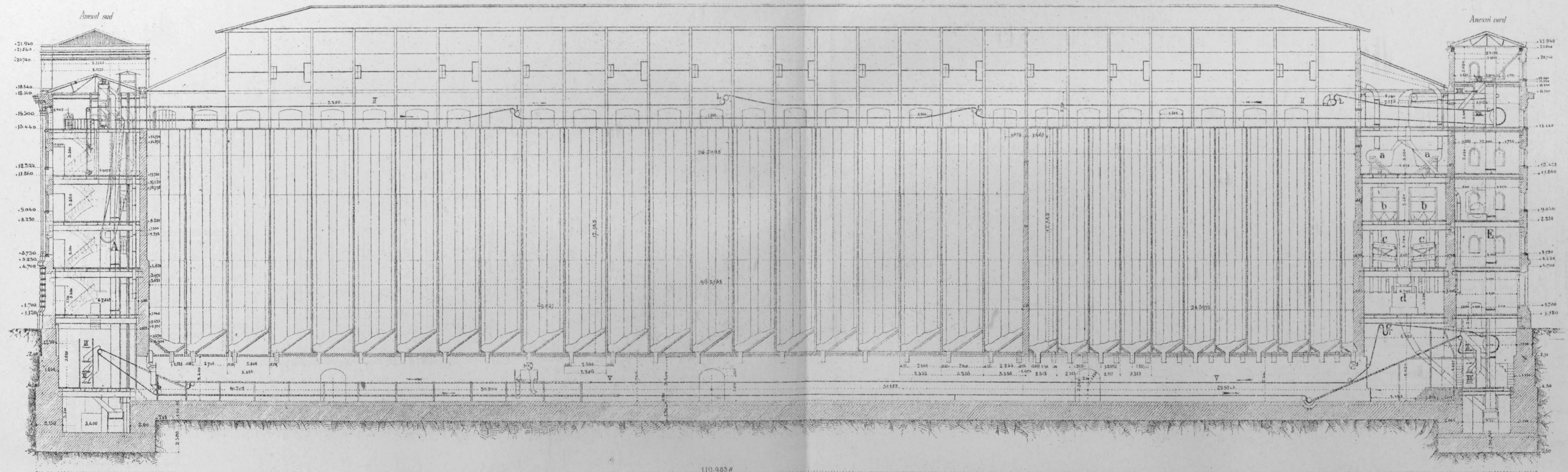
- A. Magazii de cereale cu silosuri
- B. Intreposit de marfuri
- C. Cladirea de masini
- D. Hangar de lemne
- E. Cladirea de administratie
- F. Corpul de Gardă
- G. Postul de Pompieri
- H. Biroul Magazinierului
- I. Rivăți



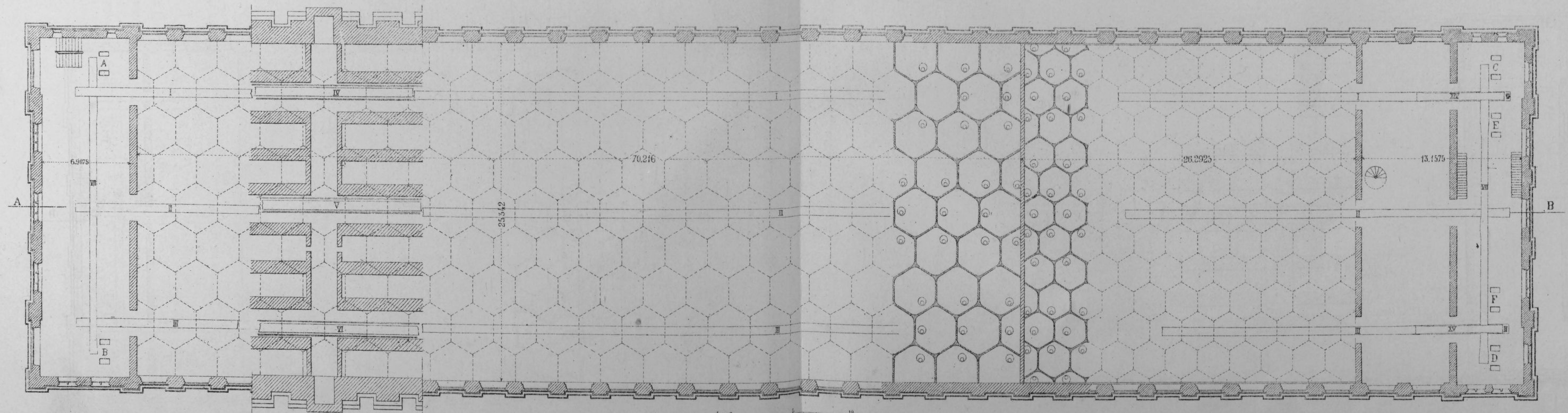
# DOCURILE DIN GALATI SI BRAILA

## MAGASII DE CEREALE

SECȚIE LONGITUDINALĂ PRIN A B



SECȚIE ORIZONTALĂ LA DIFERITE NIVELURI

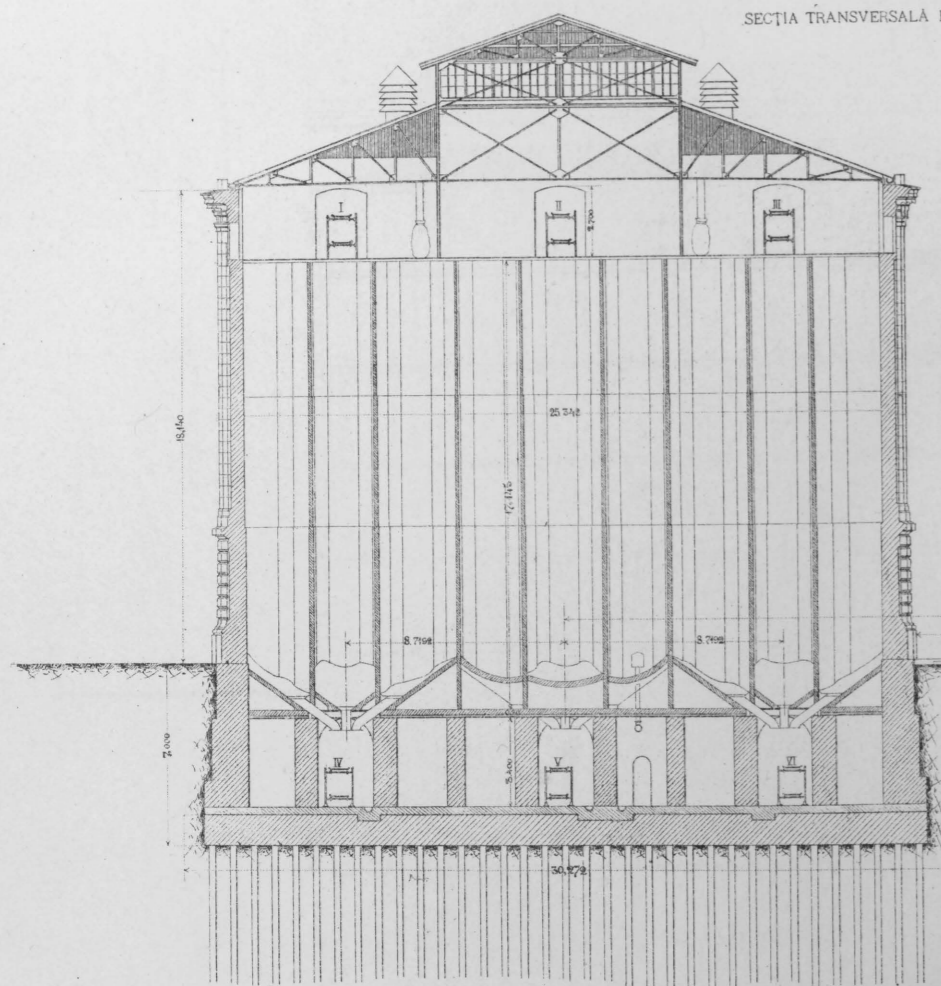




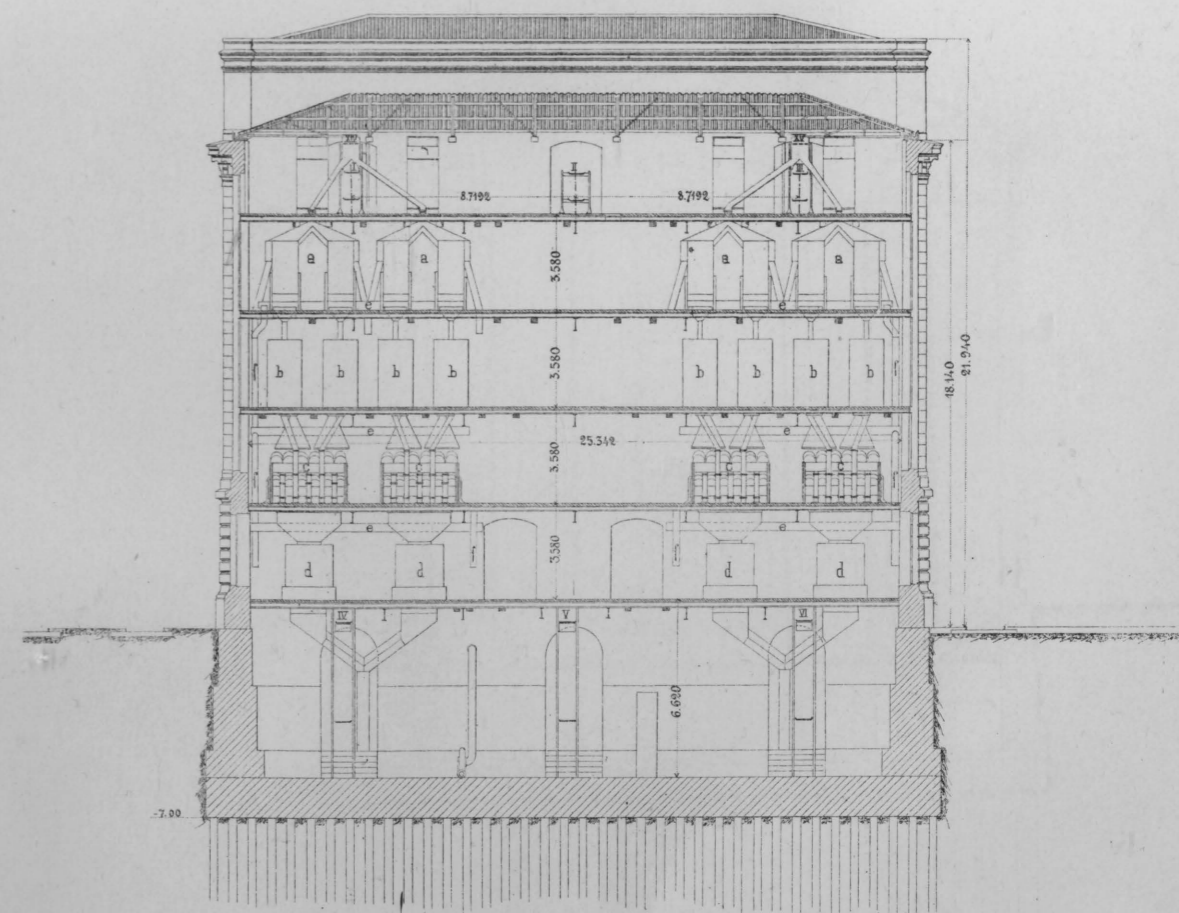
# DOCURILE DIN GALATI SI BRAILA

## MAGASII DE CEREALE

SECȚIA TRANSVERSALĂ PRIN SILOSURILE MARI



SECȚIE TRANSVERSALĂ PRIN INSTALAȚIA DE CURĂȚIT



Scara:

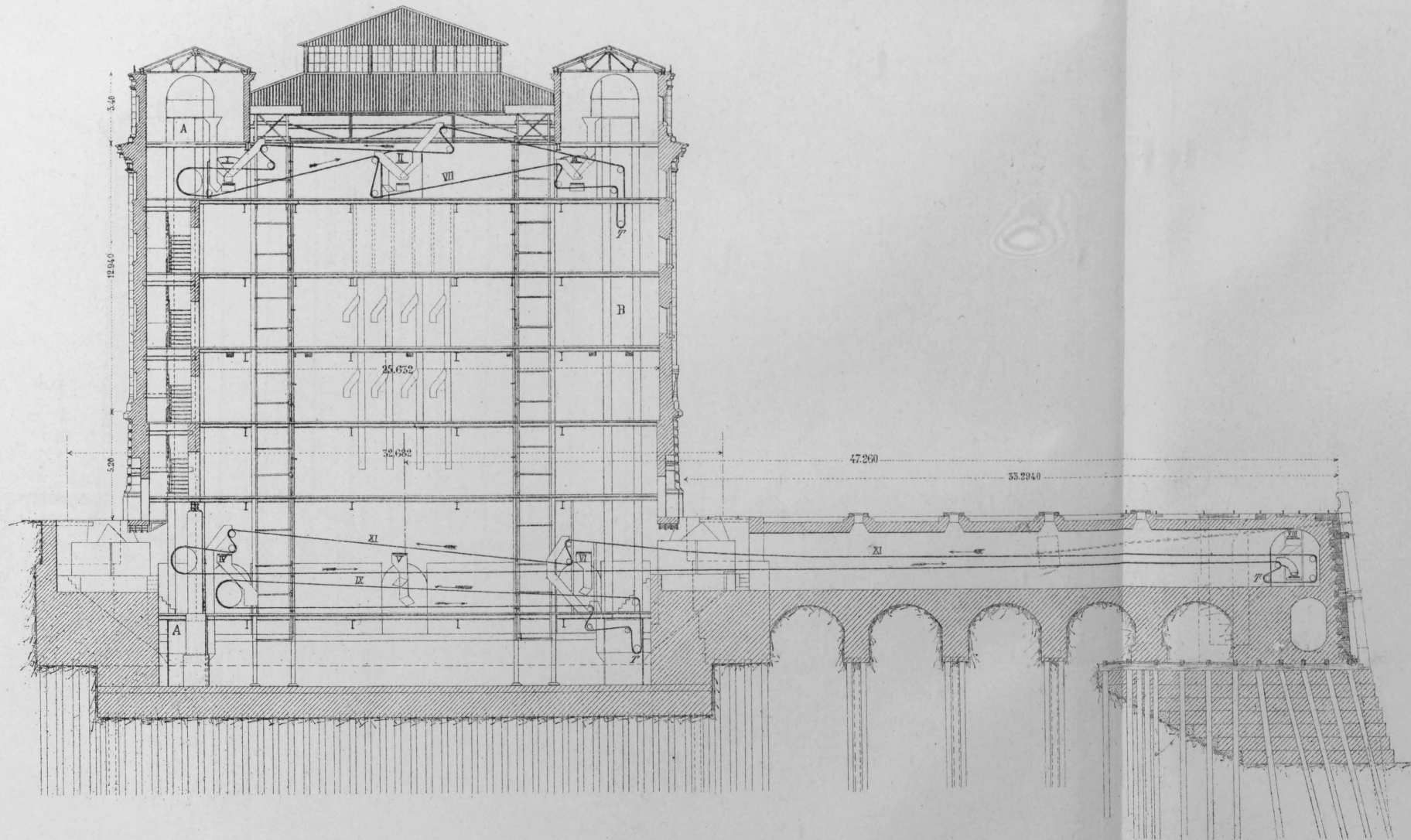
0 1 2 3 4 5 6 7 8 9



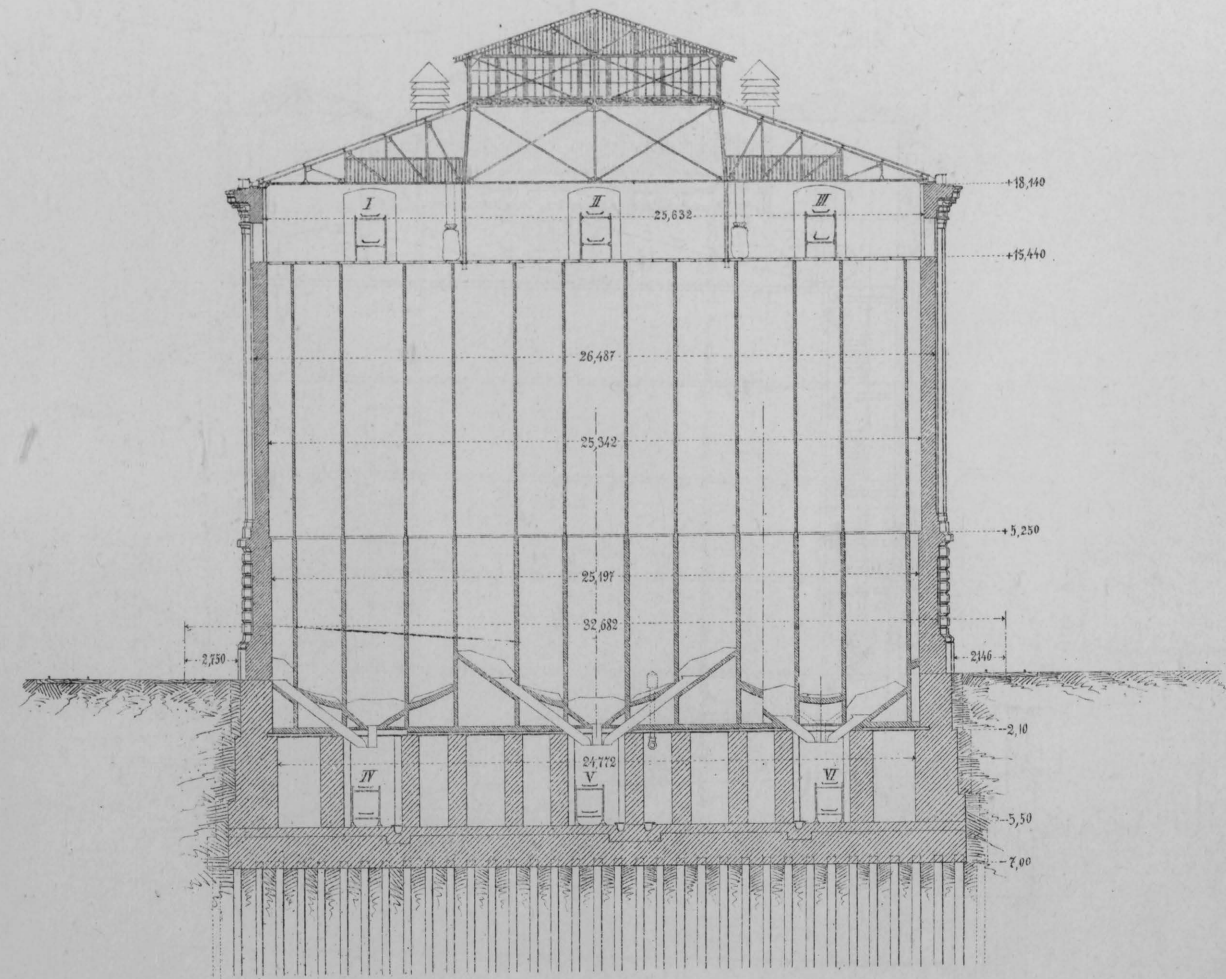
# DOCURILE DIN GALATI SI BRAILA

## MAGASII DE CEREALE

SECȚIE TRANSVERSALA PRIN ANEXUL SUD



SECȚIE TRANSVERSALA PRIN SILOSURILE MICI





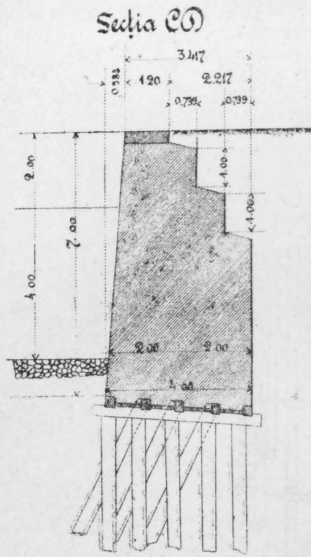
# DOCURILE DIN GALATI SI BRAILA

## MAGASII DE CEREALE

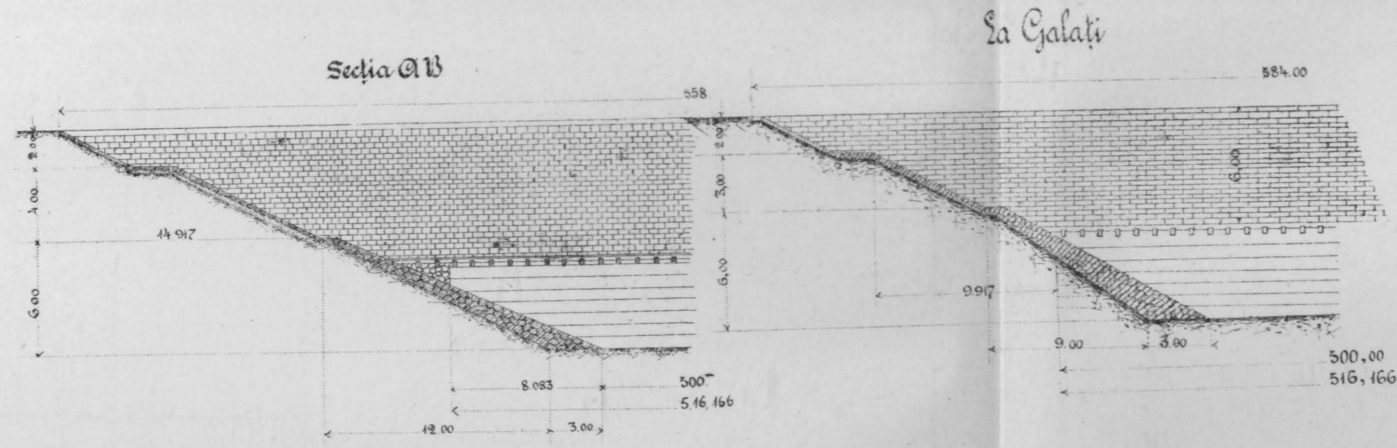
Societatea Salitronica

N° 5

RACORDAREA CHEULUI CU TALUSELE BASENULUI

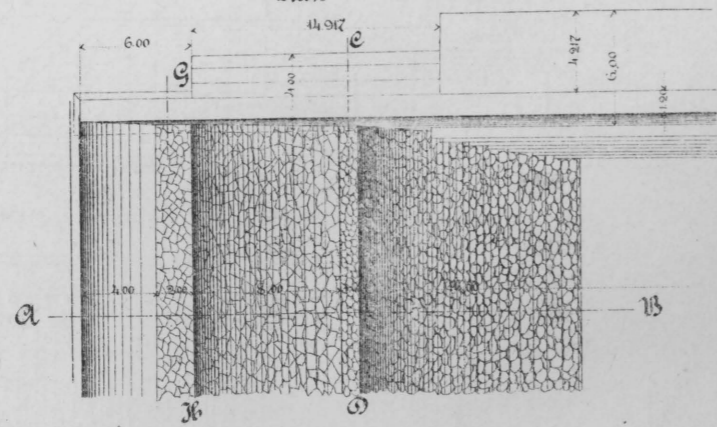


La Braïla

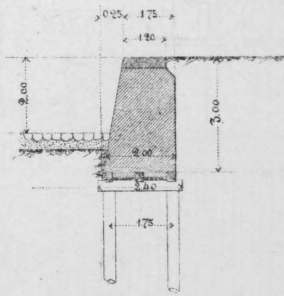


La Galați

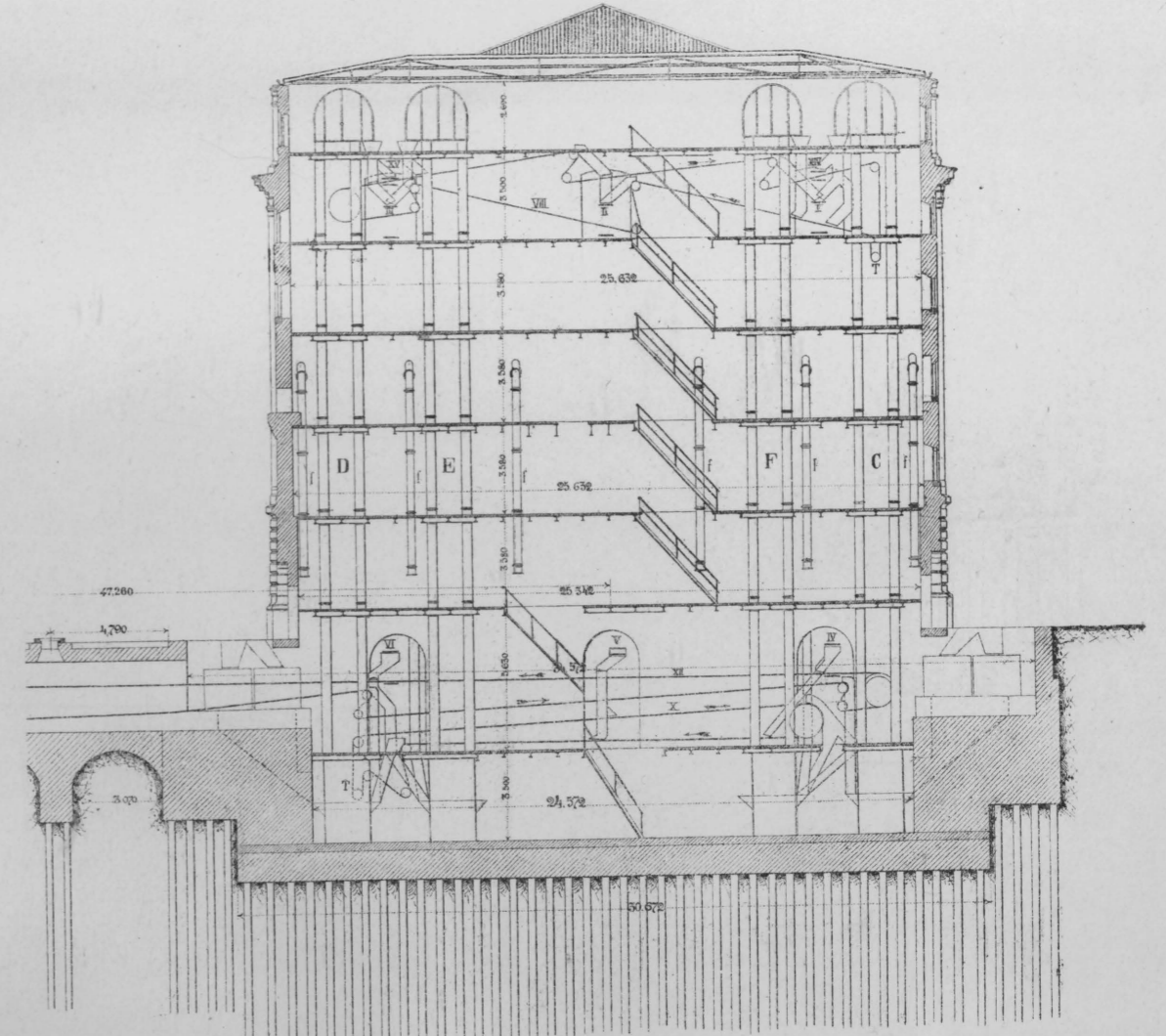
Plan



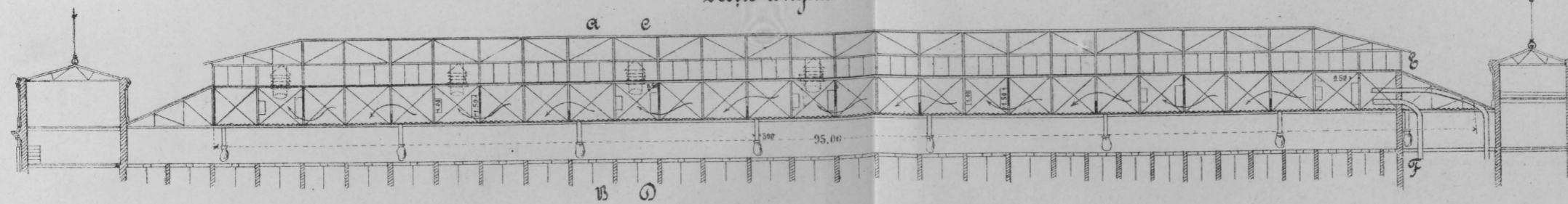
Secția GH



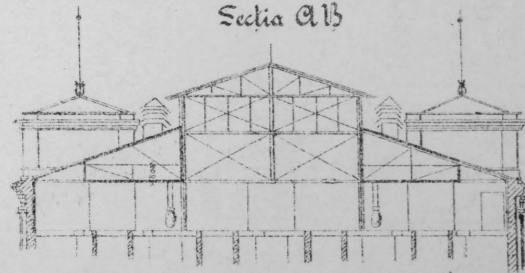
SECȚIE TRANSVERSALA PRIN ANEXUL NORD



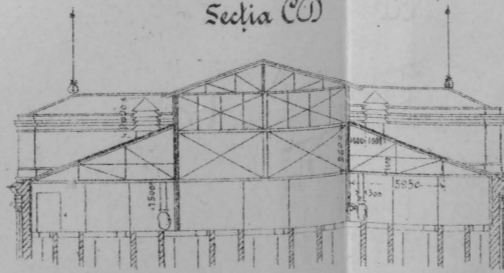
CAMERA DE PRAF  
Secție longitudinală



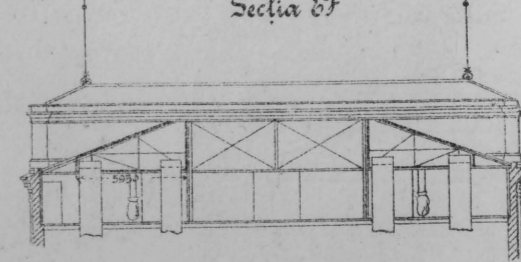
Secția AB



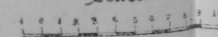
Secția CD



Secția EF



Scara



Scara

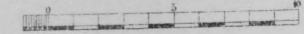




Fig. 1

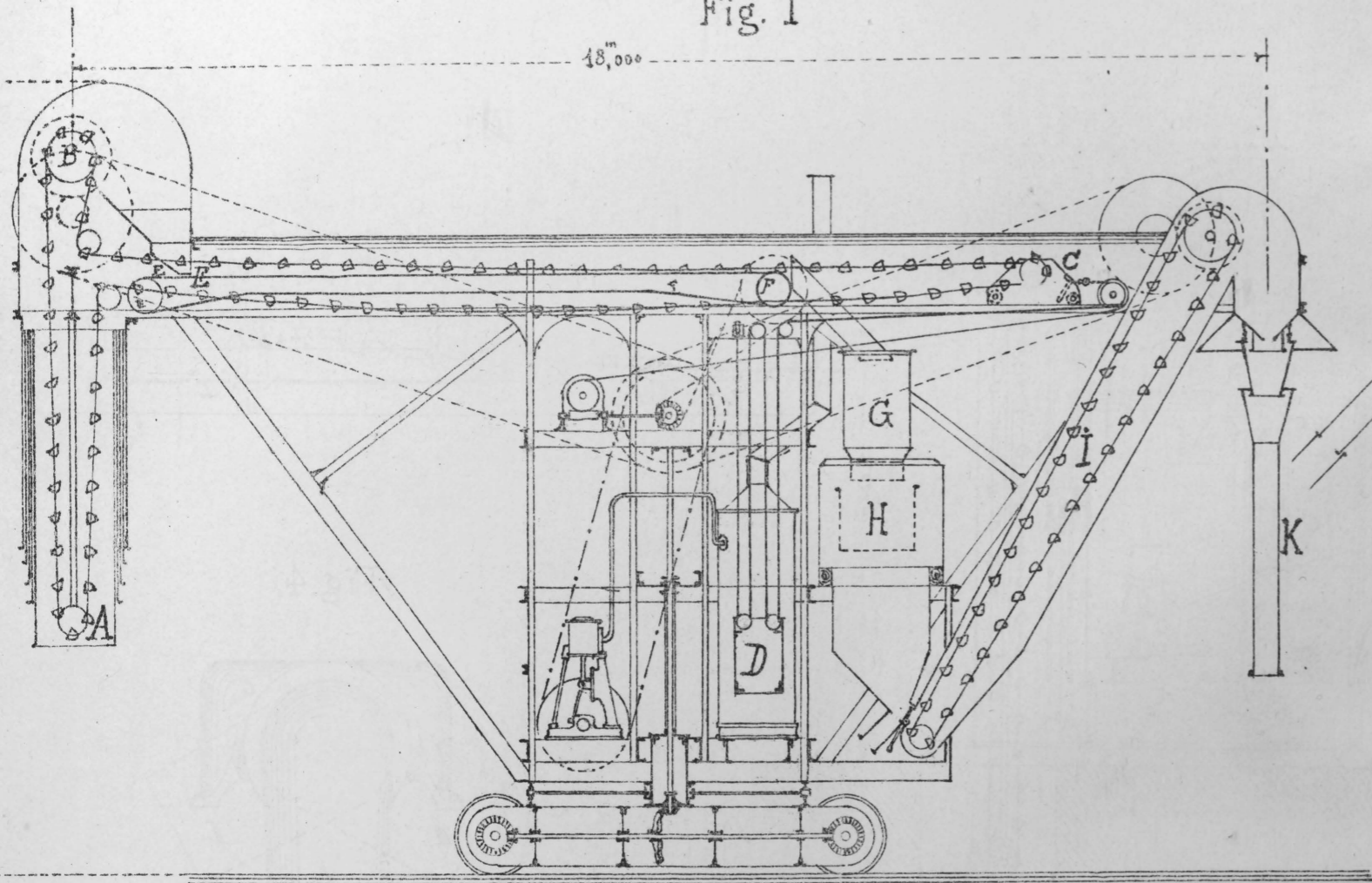


Fig. 2

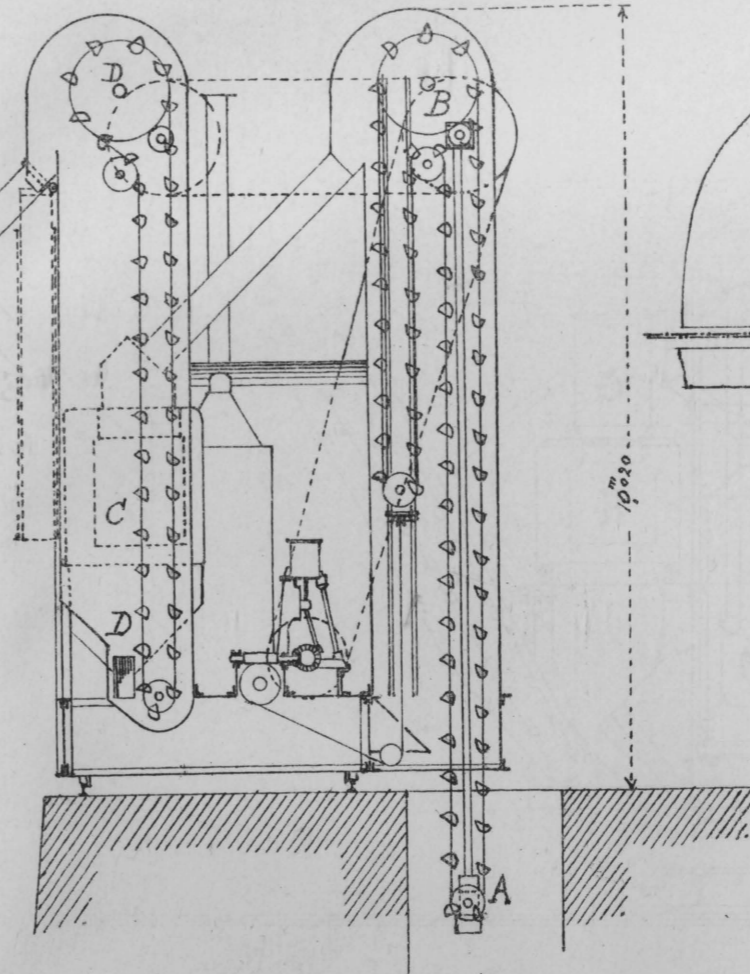


Fig. 3

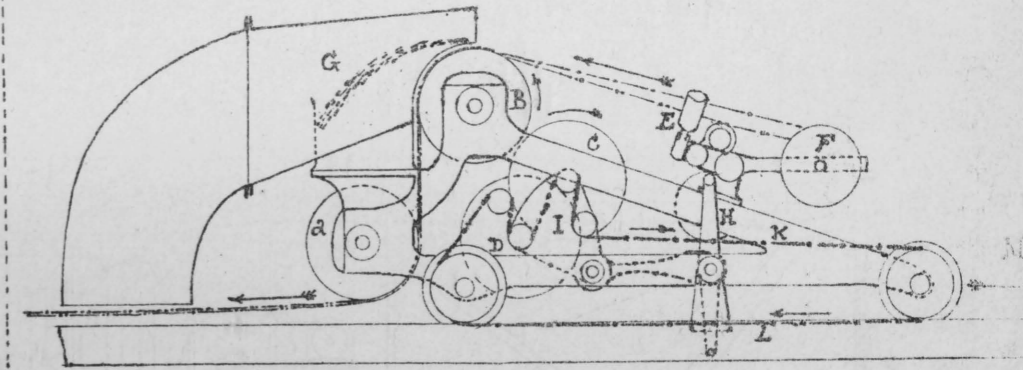


Fig. 4.

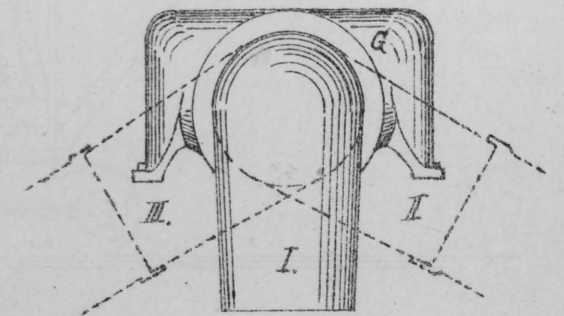


Fig. 5

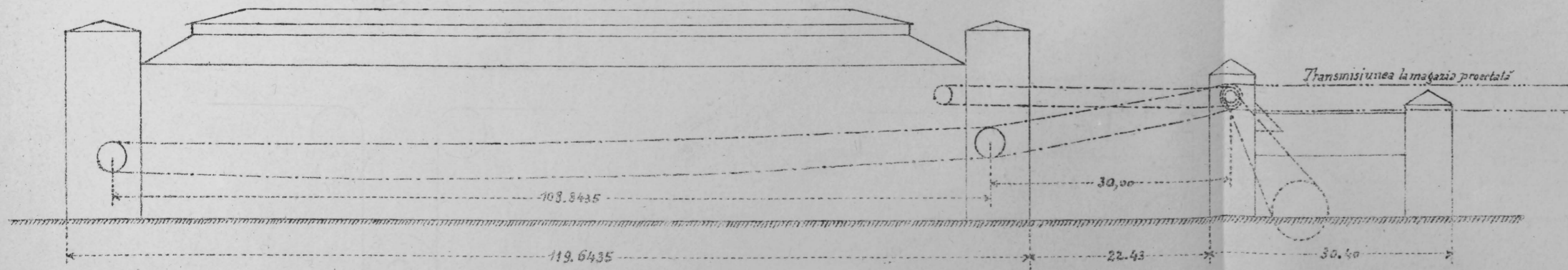


Fig. 8

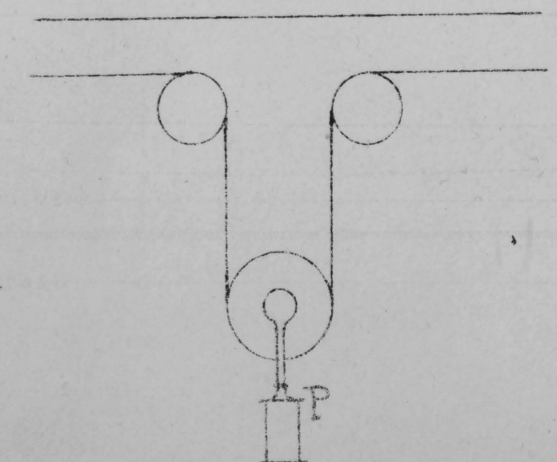




Fig. 6

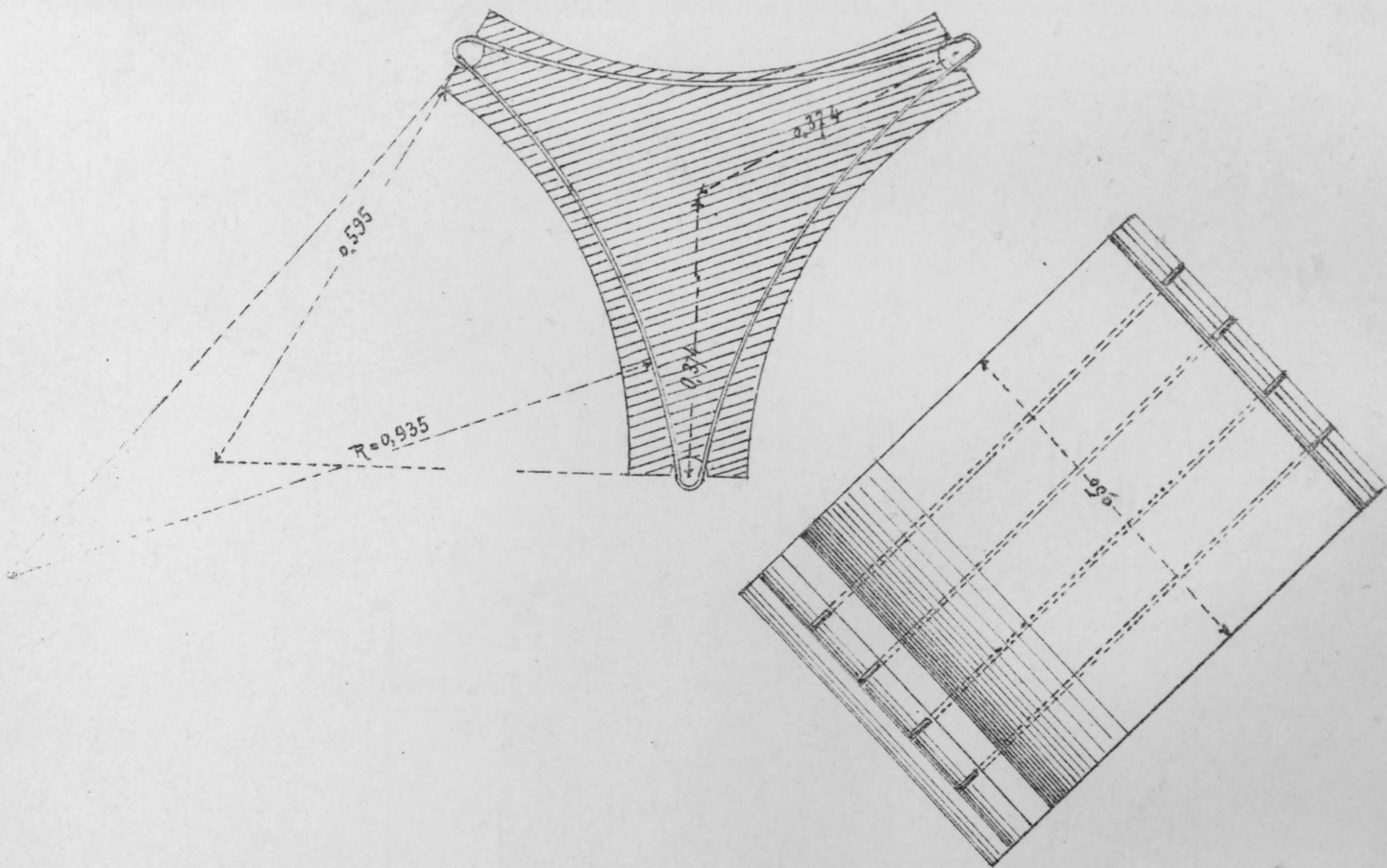


Fig. 7.

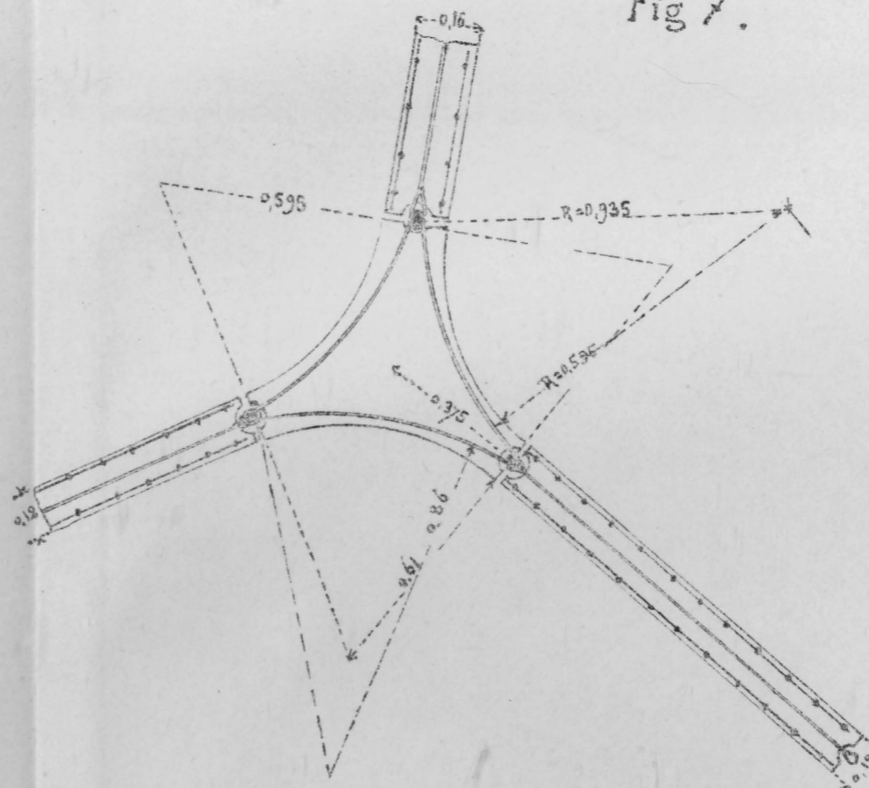


Fig. 9

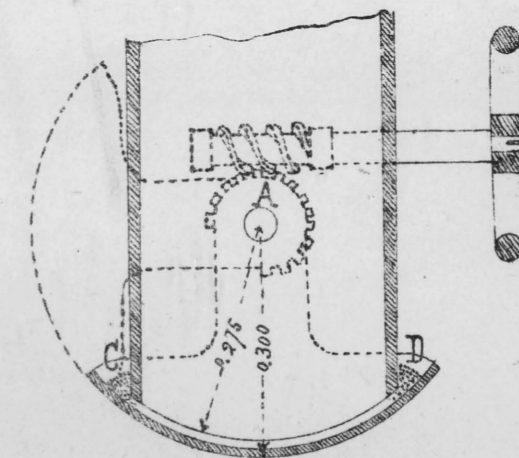


Fig. 11

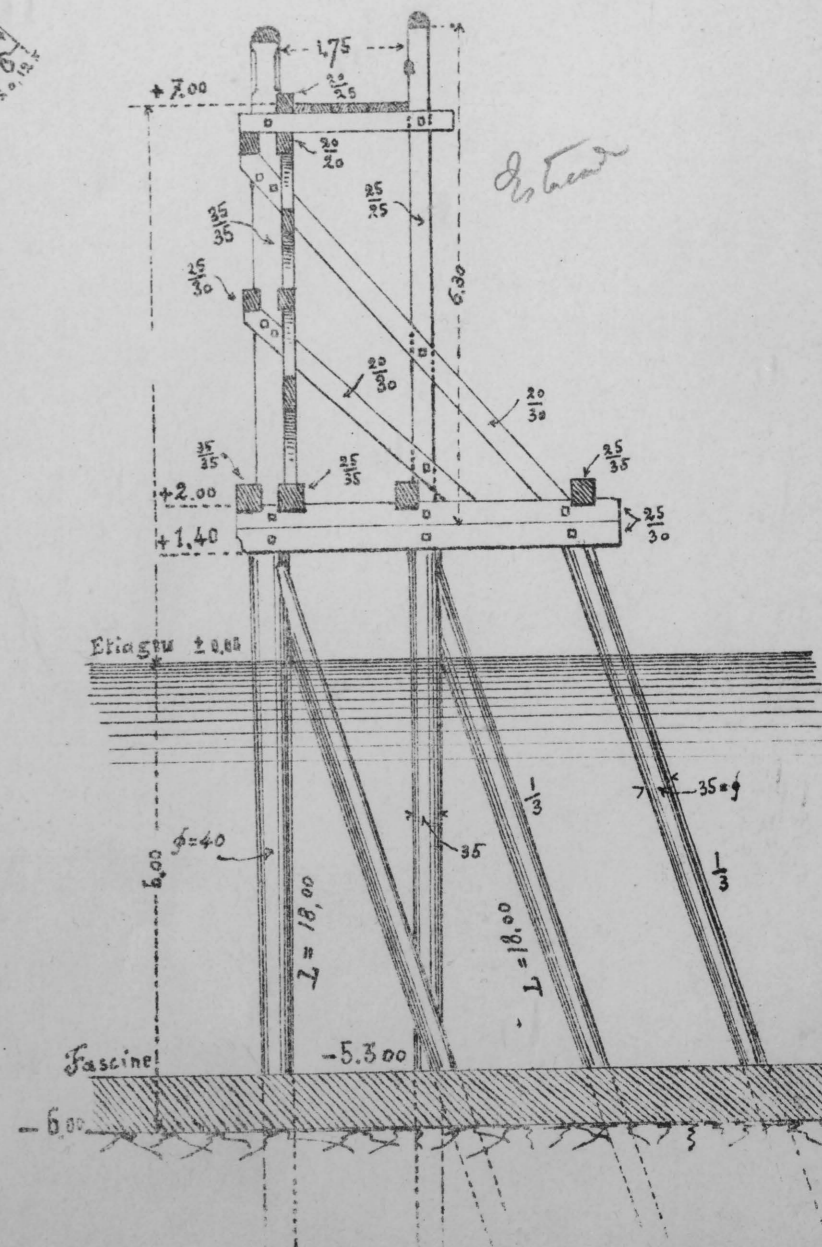


Fig. 10.

