

BRONZE DEPOSIT FROM ZĂGUJENI (II), CARAȘ-SEVERIN COUNTY

Caius SĂCĂRIN,
Dimitrie Pavel NEGREI
Caransebeș County Museum of
Ethnography and Border Regiment

Discovered in 1996, on the field, outside the borders of Zăgujeni village, Constantin Daicoviciu commune, in the place named by the locals Dealu Mare (Big Hill), the deposit is called Zăgujeni 2, whereas on the village's territory was discovered before another deposit. This deposit was discovered after a field research conducted by a team of the Caransebes County Museum of Ethnography and Border Regiment composed by: dr. Petru Bona, dr. Marian Gumă and Octavian Popescu.

The deposit is considered to be one of the biggest discovered in the Mountainous Banat. It is composed by: axe hammer, tutuli, bracelets, necklaces, links, needles, buttons, bronze wire spirals and a bead of amber with an amulet made out of stone.

The deposit was found by chance that is way we make its chronological fit by taking in account the analogies with pieces from other deposits discovered on Romanian's filed and not only. In this way we will analyze the shape, the decorations and the similarities of the pieces from Zăgujeni II with the ones from other deposits.

An important piece of the deposit is the belt (Fig. 3; Pl. I, II) made out of a bronze sheet with narrow ends. Although it was bent at the time of discovery, now it is like a sleeve. As much as one can observe on its exterior part it is decorated with incised lines, made in U shape or circles and also pointed lines in V shape to the extremity of the piece.

These kinds of pieces were found in the deposits from Fizeș,¹ Gușterița II,² Pecica II,³ Șpălnaca II,⁴ Uioara de Sus⁵. All these deposits are chronological framed in the Cincu – Suseni series.

The belt with high body (Fig. 4/1; Pl. III/2) by its shape and also by its decoration has its analogies in the deposits from Aiud,⁶ Șpălnaca II,⁷ Uioara de Sus,⁸ Fizeș,⁹, belonging to Cincu – Suseni series.

The axe with small wings (Fig. 4/2; Pl. III/1) has analogies in the deposit from Ticvanul Mare.¹⁰ Celts with small wings, similar as shape and size are also in the deposits from Gușterița,¹¹

¹ Bozu 1982, pp. 135–137.

² Dîmbovița 1977, p. 95; Pl. 158/20.

³ Dîmbovița 1977, p. 101, Pl. 171.

⁴ Dîmbovița 1977, p. 108, Pl. 202/18, 19.

⁵ Rusu 1960, p. 38; Dîmbovița 1977, p. 117, Pl. 256.

⁶ Dîmbovița 1977, p. 96.

⁷ Dîmbovița 1977, p. 108.

⁸ Dîmbovița 1977, p. 117.

⁹ Bozu 1982, pp. 135–137.

¹⁰ Săcărin 1981, p. 98, Pl. 1/2.

¹¹ Dîmbovița 1977, p. 95, Pl. 149/15.

Hortinești,¹² Sighetul Marmăției,¹³ Sîrbi.¹⁴ All these were framed in HaA1 period, belonging to Cincu – Suseni series.

The axe hammer (Pl. III/3) from the Zăgujeni deposit is an ax that has its analogies in the deposits from Aiud,¹⁵ Arad II¹⁶. For this kind of ax Florin Gogâltan¹⁷ presents all discoveries from Romanian and also the chronological frame of this pieces, which as the author says belong to the space Cincu-Suseni series.

Of course the discussion about chronology of these pieces is a problem more serious and needs an analytical research of all bronze deposit in Banat.

The bracelets (Fig. 4/3,4; Pl. IV,V,VI/1,2,6) from bronze deposit from Zăgujeni are identical or almost identical with the ones discovered in Ticvaniu Mare,¹⁸ Berzeasca,¹⁹ which are also framed in Cincu – Suseni series.

As far as that goes the necklaces (Fig. 4/5; Pl. VI/3,4) from the mentioned deposit these were chronological framed in the same period, respectively Cincu-Suseni²⁰ series.

The same types of hairpins (Fig. 4/6,7; Pl. VII) as in the deposit in discussion are found in other deposits from Romania, framed also in the Cincu – Suseni series.

The tutuls and the buttons (Pl. VIII, IX, X, XI, XII, XIII, XIV), being in large number are framed, as analogizes with other deposits, also in the Cincu – Suseni series.

In conclusion, the analysis of the pieces from the deposits and, also analogizes regarding other pieces from other deposits discovered in Romania and in the territories nearby the bronze deposit from Zăgujeni is framed in Cincu – Suseni²¹ series.

For the further research we propose to analyse from the components point of view and also from the chronological view the bronze deposits from Caras-Severin County.

The deposits from Zăgujeni rings a new proof that in this area existed communities which knew the art of bronze processing and used it in all different domains of activity.

Of course all the bronze deposits discovered on the territory of Caraș-Severin County, inclusively the one presented above needs a detailed study regarding the components and the chronological frame of these deposits, according to existence of different settlements from the end of the Bronze Age and beginning of the Iron Age from the area of the Mountainous Banat.

1. Belt with small wings. The belt has two small wings on the sideways that start from the upper part of it, narrowing in to the edge. The small wings are decorated on each part with three lines in relief. The edge of the belt has a trapezoidal shape and the wings start the small wings. The edge is rounded, with traces of pilling at one of the ends. The patina is in good shape, with green tones of different intensities. (Fig. 4/1; Pl. III/1)

Dimensions: Height: 12,5 cm

Edge width: 5,5 cm.

Inventory Number: 640

Weight: 390gr.

¹² Dîmbovița 1977, p. 263, Pl. 163/10, 11.

¹³ Dîmbovița 1977, p. 265, Pl. 163/15.

¹⁴ Dîmbovița 1977, p. 263, Pl. 185/15.

¹⁵ Dîmbovița 1977, p. 267.

¹⁶ Dîmbovița 1977, p. 281.

¹⁷ Gogâltan 1999–2000, pp. 5–59.

¹⁸ Săcărin 1981, p. 100.

¹⁹ Săcărin 1981, p. 100.

²⁰ Săcărin 1981, p. 100.

²¹ Bejenariu, 2007.

2. Belt with high body and mounting hole and handle. In the upper part of the body it is decorated with a group of two lines in relief, on both sides of a main line that is in the middle of the belt. The edge is sharp and slightly oblique in the part with the handle. The patina is in good condition, its colour is green, being peeled in some places (Fig. 4/2; Pl. III/2).

Dimensions: Height: 13 cm

Edge width: 5,5 cm.

Mouth diameter: 3,5 cm.

Inventory Number 641

Weight: 314 gr.

3. Necklace – made from a bronze bar round in section, which tapers at the ends. The ends of the collar are folded up, forming the mounting holes of the necklace. On one of the sides there is decorated with groups of incised parallel lines, arranged in V shape, pointing down, in part of the pieces ends forming distinct decoration and in the middle of the necklace the decoration is formed by a group of parallel incised lines, framed on both sides by 4 lines in C shape, like in a bracket (Fig. 4/5; Pl. VI/4).

Dimensions: Span length: 38 cm

Maximum diameter: 16 cm.

Base diameter: $1 \times 0,4$ cm.

Inventory number: 665

Weight: 193,40 gr.

4. Bracelet of bronze made out by made by casting, with semi-oval shape, with the thinned ends. The bracelet's body is decorate with groups of incised parallel lines. The green patina is good (Pl. IV/5).

Dimensions: Span length: 17 cm

Width: 0,8cm.

Maximum diameter: 5,8x4,5 cm.

Inventory number: 619

Weight: 58,58 gr.

5. Bracelet of bronze made out by made by casting, with a triangular shape and thinned ends. The bracelet's body is not decorated. The weak patina is deteriorating in some places. (Pl. V/3).

Dimensions: Span length: 16 cm

Maximum width: 1,5 cm.

Width at the ends: 0,5 cm.

Maximum diameter: 6×5 cm.

Inventory number: 625

Weight: 40,33 gr.

6. Belt made of a bronze sheet with narrow heads. The piece was bent upon burial the deposit, and now she looks like a sleeve or a round tube. As much as can be seen in the present it was decorated, on both of the exterior parts, with incised lines in U shape or circles, and also with pointed lines in V shape to the edge of it. As what concerns the dimensions of the piece we cannot be sure only by its width. The patina is low, felt down on some places (Fig. 3; Pl. I, II).

Dimensions: Approximate length: 119,32 cm.
 Maximum width: 8,5 cm.
 Width at the ends: 4,5 cm.
 Inventory number: 668
 Weight: 330,30 gr.

7. Bronze bracelet obtained by casting, round in section, with thin ends. It is decorated in the middle by two parallel incised lines sideways the decorations consists of two shaded rhomb, which are are flanked by groups of parallel incised lines. On one of the body the piece has oxides. The green patina is good (Pl. IV/1).

Dimensions: chord length: 19 cm
 Bar diameter: 1,8 cm.: 19 cm.
 Ends diameter: 0,8 cm.
 Maximum diameter: $6 \times 4,5$ cm.
 Inventory number 615
 Weight: 226 gr.

8. Necklace of beads of 31 reddish brown amber beads (inventory number 460–464, 468–470, 472–747, 480–490), 57 blue glass ambers. From the point of view of the form the beads are rounded, trapezoidal, and oblong, with holes to be lined. From the string it makes part a rounded piece with 6 conical projections (nr. inv. 459), and an amulet made out of flat stone, its colour is reddish brown perforated at one end (L–5,6 cm, LA–2,1cm, gr–0,6, nr. inv. 458. The entire necklace has 101 pieces (Fig. 5).

Dimensions: Inventory number: 458–464, 468–470, 472–474, 48–490
 Weight: 43 gr.

9. Bracelet made of a bronze round bar which was twisted, with the thinner, rounded ends. Good green patina (Pl. VI/2).

Dimensions: Chord length: 15 cm
 Maximum diameter: 0,6 cm.
 Inventory number: 629
 Weight: 29 gr.

10. Bronze bracelet made by casting in an empty shape in the interior, and the bracelet is now like an bronze leaf curled, with an empty interior. The piece was restored, is broken at one of its ends, which was clinging after the discovery. Good green patina (Pl. V/4).

Dimensions: Chord length: 18 cm
 Maximum diameter: $5,5 \times 4,5$ cm.
 Inventory number: 626
 Weight: 36,09 gr.

11. Bronze bracelet made by casting, with round shape, sharp at the edges, without decoration. Good green patina (Pl. IV/3).

Dimensions: Chord length: 19 cm
 Maximum diameter: $5,5 \times 6$ cm.
 Bar diameter: 0,9 cm.

Inventory number: 617

Weight: 70 gr.

12. Bronze bracelet, casted in semicircular shape, with rounded and thick ends. The decoration consists of incised parallel lines, arranged oblique on both sides of the bracelet. Good green patina (Pl. V/5).

Dimensions: Chord length: 116 cm

Base width: 0,8 cm.

Inventory number: 621

Weight: 42,71 gr.

13. Bronze bracelet made by casting, in the form of a round bar with thinned ends, without decoration. Good green patina, with degradation signs here and there (Pl. IV/6).

Dimensions: Chord length: 18 cm

Maximum diameter: 1 cm.

Inventory number: 620

Weight: 79,68 gr.

14. Bronze bracelet made by casting, in the form of a rounded bar with thinned ends, without decoration. Good green patina (Fig. 4/4)

Dimensions: Chord length: 18 cm

Maximum diameter: 0,9 cm.

Inventory number: 623

Weight: 63,19 gr.

15. Bronze bracelet in triangle form, with a break at one edge, with rounded ends. The decoration can be seen only in some places, consisting of incised parallel oblique lines (Pl. V/2).

Dimensions: Chord length: 18 cm

Maximum diameter: 1,1 cm.

Inventory number: 624

Weight: 45,80 gr.

16. Bronze bracelet made by casting in a round shape with with thinned ends, the decoration consists of groups on incised parallel lines and two groups of shaded triangles, disposed until to the end of the bracelet. Good green patina (Pl. IV/2).

Dimensions: Chord length: 19 cm

Maximum diameter: 1,5 cm.

Inventory number: 616

Weight: 211,60 gr.

17. Bronze bracelet cast in a rhombic shape with sharp tips. Green patina, destroyed in some places (Pl. VI/4).

Dimensions: Chord length: 18 cm

Maximum diameter: 1 cm.

Inventory number: 618

Weight: 77,32 gr.

18. Bronze bracelet made by casting in a round shape with with thinned ends. Good green patina (Pl. V/1).

Dimensions: Chord length: 16 cm

Maximum diameter: 0,8 cm.

Inventory number: 622

Weight: 28,81 gr.

19. Bronze bracelet made by casting in a round shape, which has been twisted, with sharp ends. Good green patina. (Pl. V/6).

Dimensions: Chord length: 16 cm

Maximum diameter: 0,7 cm.

Inventory number: 627

Weight: 23,35 gr.

20. Axe hammer with prominent edges, flared lip that can be observed the stump from casting. It has traces of use. Weak green patina (Pl. III/3).

Dimensions: Height: 5,5 cm

Mounting hole diameter: 2,8 × 2,8 cm.

Base diameter: 2,8 × 1,8 cm.

Inventory number: 630

Weight: 111,35 gr.

21. Tutul in round shape, the decoration consist of relief incised lines. One of the sides is missing. In the interior has an ear clip. Green patina with calcareous deposits (Pl. X/6).

Dimension: Diameter: 1,8 × 1,3 cm.

Height: 1,4 cm.

Inventory number: 572

Weight: 2,22 gr.

22. Tutul in round shape, the decoration consist of relief incised lines In the interior has an ear clip. Green patina with calcareous deposits (Pl. XII/2).

Dimension: Diameter: 2 cm.

Height: 1,3 cm.

Inventory number: 562

Weight: 4,43 gr.

23. Earring in round shape, made out of a bronze bar, round in section, with sharp ends. Green patina with calcareous deposits (Pl. XIV/2).

Dimension: Diameter: 2,8 × 2,5 cm.

Bar width: 0,5 cm.

Inventory number: 611

Weight: 7,78 gr.

24. Earring in round shape, made out of a bronze bar, round in section, with sharp ends. Green patina, with weak oxide trashes (Pl. XIV/3)

Dimension: Diameter: 3 cm.
Bar width: 0,6 cm.
Inventory number: 612
Weight: 16,97 gr.

25. Button with oval shape, with the inner clamping bar. In the exterior part of the piece there is a green patina and in the interior with calcareous deposits (Pl. XIV/5).

Dimension: Diameter: 2,8 cm.
Height: 1,2 cm.
Inventory number: 614
Weight: 13,41 gr.

26. Button with conical shape has the edges broken. In the interior part there is agglutinating another button of which is kept only a half of it. The green patina with strong traces of oxides and calcareous deposits. (Pl. XIII/9).

Dimension: Diameter: 4 × 3,5 cm.
Height: 1,2 cm.
Inventory number: 637
Weight: 11,37 gr.

27. Two buttons of the same type, stick to each other, with broken edges. Weak patina with deposits of oxides and calcareous ones (Pl. XIII/6).

Dimension: Diameter: 3,2 × 2,5 cm.
Height: 1,3 cm.
Inventory number: 634
Weight: 4,23 gr.

28. Three buttons of the same type, stick to each other, with broken edges Weak patina with deposits of oxides and calcareous ones (Pl. XIV/7).

Dimension: Diameter: 4 × 3,5 cm.
Height: 1,8 cm.
Inventory number: 639
Weight: 18,54 gr.

29. Five buttons of the same type, stick to each other, the one that is above has a broken head. All buttons have broken edges. The green patina has traces of oxides and chalk. (Pl. XIV/6).

Dimension: Diameter: 4 × 3,6 cm.
Height: 2 cm.
Inventory number: 638
Weight: 26,45 gr.

30. Button similar to the type and shape with the ones mentioned before, with degraded edges. The green patina has deposits of oxides and chalk. (Pl. XIII/8).

Dimension: Diameter: 4,5 × 3,6 cm.
Height: 1,8 cm.
Inventory number: 636
Weight: 7,16 gr.

31. Five buttons stick to each other, similar to the type and shape with the ones mentioned before. All of them have degraded edges. The green patina is degraded in some places (Pl. XIII/5).

Dimension: Diameter: 4 × 3,5 cm.

Height: 1,7 cm.

Inventory number: 633

Weight: 9,48 gr.

32. Button similar to the type and shape with the ones mentioned before, with degraded edges. The green patina has deposits of oxides and chalk. (Pl. XIII/7)

Dimension: Diameter: 3 × 2,5 cm.

Height: 1,5 cm.

Inventory number: 635

Weight: 2,14 gr.

33. Tutul with the same shape and decoration as the ones mentioned before, with clamping screw inside. Green patina with traces of calcareous deposits (Pl. XI/4).

Dimension: Diameter: 3,2 × 3 cm.

Height: 1,8 cm.

Inventory number: 583

Weight: 9,75 gr.

34. Tutul with the same shape and decoration as the ones mentioned before, with clamping screw inside. Green patina with traces of calcareous deposits. (Pl. VIII/4)

Dimension: Diameter: 2 × 1,8 cm.

Height: 1,8 cm.

Inventory number: 569

Weight: 6,20 gr.

35. Tutul with the same shape and decoration as the ones mentioned before, with clamping screw inside. Good green patina (Pl. XII/6).

Dimension: Diameter: 2,5 cm.

Height: 1,4 cm.

Inventory number: 584

Weight: 6,41 gr.

36. Tutul with the same shape and decoration as the ones mentioned before, with clamping screw inside. Good green patina with calcareous deposits (Pl. XII/3).

Dimension: Diameter: 2,2 cm.

Height: 1,2 cm.

Inventory number: 563

Weight: 4,03 gr.

37. Tutul with the same shape and decoration as the ones mentioned before, with clamping screw inside. Good green patina (Pl. XII/4).

Dimension: Diameter: 2,4 cm.

Height: 1,5 cm.
Inventory number: 564
Weight: 5,8 gr.

38. Tutul with the same shape and decoration as the ones mentioned before, with clamping screw inside, with broken edges. Good green patina with calcareous deposits (Pl. XII/8).

Dimension: Diameter: 2,8 × 2,6 cm.
Height: 1,9 cm.
Inventory number: 589
Weight: 9,29 gr.

39. Tutul with the same shape and decoration as the ones mentioned before, with clamping screw inside. Green patina with calcareous deposits (Pl. XII/1).

Dimension: Diameter: 2,8 × 2,5 cm.
Height: 1,6 cm.
Nr. inv.: 560
Weight: 9,82 gr.

40. Tutul with the same shape and decoration as the ones mentioned before, with clamping screw inside. Green patina (Pl. IX/6).

Dimension: Diameter: 2,2 × 2,2 cm.
Height: 1,5 cm.
Inventory number: 579
Weight: 5,09 gr.

41. Tutul with the same shape and decoration as the ones mentioned before, with clamping screw inside. Green patina with calcareous deposits (Pl. XII/5).

Dimension: Diameter: 2,5 × 2,5 cm.
Height: 1,2 cm.
Inventory number: 577
Weight: 6,01 gr.

42. Tutul with the same shape and decoration as the ones mentioned before, with clamping screw inside, with broken edges. Green patina with calcareous deposits (Pl. IX/3).

Dimension: Diameter: 2 × 1,5 cm.
Height: 1,2 cm.
Inventory number: 556
Weight: 2,70 gr.

43. Tutul with the same shape and decoration as the ones mentioned before, with clamping screw inside. Green patina with calcareous deposits (Pl. VIII/3).

Dimension: Diameter: 2,2 × 2 cm.
Height: 1,3 cm.
Inventory number: 568
Weight: 3,50 gr.

44. Tutul with the same shape and decoration as the ones mentioned before, with clamping screw inside. Green patina with calcareous deposits (Pl. X/9).

Dimension: Diameter: 2,5 × 2,5 cm.

Height: 1,4 cm.

Inventory number: 582

Weight: 6,68 gr.

45. Tutul with the same shape and decoration as the ones mentioned before, with clamping screw inside, one of the edge is broken. Green patina with calcareous deposits (Pl. IX/1).

Dimension: Diameter: 2,5 × 2,5 cm.

Height: 1,5 cm.

Inventory number: 552

Weight: 7,42 gr.

46. Tutul with the same shape and decoration as the ones mentioned before, with clamping screw inside. Green patina with calcareous deposits (Pl. IX/7).

Dimension: Diameter: 2,5 × 2,5 cm.

Height: 1,5 cm.

Inventory number: 593

Weight: 7,36 gr.

47. Tutul with the same shape and decoration as the ones mentioned before, with clamping screw inside and slightly deteriorate edges (Pl. VIII/6).

Dimension: Diameter: 1,5 × 1,5 cm.

Height: 1,2 cm.

Inventory number: 580

Weight: 2,19 gr.

48. Tutul with the same shape and decoration as the ones mentioned before, with clamping screw inside. Green patina with calcareous deposits (Pl. XII/9).

Dimension: Diameter: 3 × 3 cm.

Height: 1,7 cm.

Inventory number: 597

Weight: 11,66 gr.

49. Tutul with the same shape and decoration as the ones mentioned before, with clamping screw inside, with broken edge. It has a green patina and decoration consists of slightly raised ribs and arranged in concentric circles (Pl. X/1).

Dimension: Diameter: 2,8 cm.

Height: 1,5 cm.

Inventory number: 551

Weight: 6,8 gr.

50. Tutul with the same shape and decoration as the ones mentioned before with mounting ears inside, with broken edge, made out of a crossbar. Green patina, the piece is strongly corroded (Pl. X/2).

Dimension: Diameter: 2,7 cm.

Height: 1,4 cm.

Inventory number: 554

Weight: 7,1 gr.

51. Tutul with the same shape and decoration as the ones mentioned before, with clamping screw inside. Green blue patina with calcareous deposits (Pl. X/3).

Dimension: Diameter: 2,7 cm.

Height: 1,5 cm.

Inventory number: 555

Weight: 7,2 gr.

52. Tutul with the same shape and decoration as the ones mentioned before, with broken edge. It has small dimensions and clamping screw inside. It has green patina and traces of corrosion inside (Pl. X/4).

Dimension: Diameter: 1,8 cm.

Height: 1,2 cm.

Inventory number: 559

Weight: 2,6 gr.

53. Tutul fragmentary preserved, with clamping screw inside, the decoration consist of din ribs arranged concentrically It has green patina and traces of corrosion (Pl. X/5).

Dimension: Diameter: 2,2 cm.

Height: 1,2 cm.

Inventory number: 565

Weight: 4 gr.

54. Earring made out of a bronze bar, rounded in section, with ends thinned and bonded. Green patina with calcareous deposits (Pl. XIV/4).

Dimension: Diameter: 3,5 cm.

Bar diamneter: 0,5 cm.

Inventory number: 613

Weight: 14,85 gr.

55. Tutul with the same shape and decoration as the ones mentioned before, with clamping screw inside. Green patina with calcareous deposits (Pl. XII/7).

Dimension: Diameter: 2,7 cm.

Height: 1,3 cm.

Inventory number: 588

Weight: 6,70 gr.

56. Tutul with the same shape and decoration as the ones mentioned before, with clamping screw inside. Green patina is in some places burst (Pl. X/7).

Dimension: Diameter: 2,1 cm.

Height: 1,3 cm.

Inventory number: 573

Weight: 4,6 gr.

57. Tutul with broken edge, with the same shape and decoration as the ones mentioned before, with clamping screw inside. It has green patina and traces of corrosion (Pl. X/8)

Dimension: Diameter: 2,1 cm.

Height: 1,5 cm.

Inventory number: 576

Weight: 5 gr.

58. Tutul with the same shape and decoration as the ones mentioned before, with clamping screw inside. The green patina has corrosion trashes (Pl. VIII/2).

Dimension: Diameter: 2 cm.

Height: 1,3 cm.

Inventory number: 566

Weight: 4,3 gr.

59. Tutul, fragmentary, has a fastening lug made out of a crossbar. The decoration consists of faint ridges, arranged concentrically around the central protuberance. The patina grey green with corrosion trashes on the exterior (Pl. VIII/5).

Dimension: Diameter: 2,1 cm.

Height: 1,3 cm.

Inventory number: 570

Weight: 3,8 gr.

60. Tutul with broken edge, with the same shape and decoration as the ones mentioned before, with clamping screw inside. The green patina has corrosion trashes (Pl. VIII/7).

Dimension: Diameter: 2,5 cm.

Height: 1,6 cm.

Inventory number: 575

Weight: 6,1 gr.

61. Tutul with broken edge, with the same shape and decoration as the ones mentioned before, with clamping screw inside. The green patina has corrosion trashes (Pl. VIII/8).

Dimension: Diameter: 2,4 cm.

Height: 1,1 cm.

Inventory number: 581

Weight: 6,4 gr.

62. Tutul with broken edge, with the same shape and decoration as the ones mentioned before, with clamping screw inside. The blue green patina has corrosion trashes. (Pl. IX/2)

Dimension: Diameter: 2,5 cm.

Height: 1,6 cm.

Inventory number: 553

Weight: 7,2 gr.

63. Tutul with broken edge, with the same shape and decoration as the ones mentioned before, with clamping screw inside. It has small dimensions and green patina (Pl. IX/4).

Dimension: Diameter: 1,7 cm.
Height: 1,4 cm.
Inventory number: 557
Weight: 2,7 gr.

64. Tutul with broken edge, with the same shape and decoration as the ones mentioned before, with clamping screw inside. The patina is blue in exterior and green in the interior; it has strong traces of corrosion (Pl. IX/5).

Dimension: Diameter: 2,3 cm.
Height: 1,5 cm.
Inventory number: 578
Weight: 6,8 gr.

65. Tutul with broken edge, with the same shape and decoration as the ones mentioned before, with clamping screw inside. The green patina has corrosion traces (Pl. IX/8).

Dimension: Diameter: 2,5 cm.
Height: 1,4 cm.
Inventory number: 595
Weight: 5,3 gr.

66. Tutul with broken edge, with the same shape and decoration as the ones mentioned before, with clamping screw inside. The grey patina has corrosion traces (Pl. IX/9).

Dimension: Diameter: 2,6 cm.
Height: 1,5 cm.
Inventory number: 596
Weight: 6,1 gr.

67. Tutul with broken edge, with the same shape and decoration as the ones mentioned before, with clamping screw inside, with broken edges. Good green patina (Pl. XIII/1).

Dimension: Diameter: 2 × 2 cm.
Height: 1,8 cm.
Inventory number: 558
Weight: 4,19 gr.

68. Tutuli groped, stick to each other, with the same shape and decoration as the ones mentioned before, with clamping screw inside. All the three pieces have broken edges. The weak patina has traces of calcareous deposits (Pl. XI/9).

Dimension: Diameter: 2 × 2 cm.
Height: 1,2 cm.
Inventory number: 599
Weight: 10,55 gr.

69. Tutul with the same shape and decoration as the ones mentioned before, with clamping screw inside. Good green patina with traces of calcareous deposits. A piece is missing from its edge (Pl. VIII/1).

Dimension: Diameter: 2,5 × 2,5 cm.

Height: 1,8 cm.

Inventory number: 550

Weight: 7,78 gr.

70. Earring made out of a bronze bar, round in section with thick ends. Good green patina with traces of calcareous deposits (Pl. XIV/1).

Dimension: Diameter: 3×3 cm.

Bar diameter: 0,5 cm.

Inventory number: 610

Weight: 14,55 gr.

71. Tutul with the same shape and decoration as the ones mentioned before, with clamping screw inside. Green patina with traces of calcareous deposits (Pl. VIII/9)

Dimension: Diameter: $2,6 \times 2,6$ cm.

Height: 1,8 cm.

Inventory number: 586

Weight: 10,96 gr.

72. Tutul of round shape, with one of the lateral parts broken. It is decorated with a group of 4 relief parallel lines of. In the upper part there is handler grip. In some places the green patina is destroyed and is strongly oxidized (Pl. XI/1).

Dimension: Diameter: $2,2 \times 1,8$ cm.

Height: 1,5 cm.

Inventory number: 571

Weight: 4,78 gr.

73. Tutul with the same shape and decoration as the ones mentioned before, with clamping screw inside. The green patina is cleaned in the exteriorly part, with oxidation traces (Pl. XI/3).

Dimension: Diameter: $2,2 \times 2,2$ cm.

Height: 1,6 cm.

Inventory number: 567

Weight: 3,18 gr.

74. Tutul with the same shape and decoration as the ones mentioned before, with clamping screw inside. Weak green patina (Pl. XI/2).

Dimensions: Diameter: $2,3 \times 2,1$ cm.

Height: 1,6 cm.

Inventory number: 561

Weight: 4,09 gr.

75. Tutul with round shape, with the same shape and decoration as the ones mentioned before, with clamping screw inside. Good green patina, with oxidation traces inside (Pl. XIII/3).

Dimensions: Diameter: $2,3 \times 2,3$ cm.

Height: 1,8 cm.

Inventory number: 585

Weight: 8 gr.

76. Tutul with the same shape and decoration as the ones mentioned before, with clamping screw inside. Green patina, with oxidation traces (Pl. XI/6).

Dimensions: Diameter: $2,8 \times 2,8$ cm.

Height: 2 cm.

Inventory number: 590

Weight: 9,09 gr.

77. Tutul with the same shape, with a broken edge. Green patina, with oxidation traces (Pl. XI/7).

Dimension: Diameter: $2,8 \times 2,5$ cm.

Height: 1,8 cm.

Inventory number: 594

Weight: 8,07 gr.

78. Tutul with the same type and shape. On the exterior part the patina is cleaned, in the interior the patina has green colour and oxidation traces (Pl. XIII/4).

Dimension: Diameter: $3,1 \times 3,1$ cm.

Height: 1,8 cm.

Inventory number: 591

Weight: 12,63 gr.

79. Tutul with the same type and shape, with broken edges. The green patina presents traces of oxidations in the interior part (Fig. 4/8).

Dimensions: Diameter: $3 \times 2,5$ cm.

Height: 1,6 cm.

Inventory number: 592

Weight: 11,91 gr.

80. Tutul with the same type and shape, with broken edges. The green patina presents traces of strongly oxidations (Pl. XI/5).

Dimensions: Diameter: $3,2 \times 3$ cm.

Height: 1,5 cm.

Inventory number: 587

Weight: 12,33 gr.

81. Bronze necklace obtained from a bronze bar, round in section, with thick ends and twisted inside, forming a clamping orifice, one of the ends is broken. Green patina with strongly oxidation traces (Pl. VI/3).

Dimensions: Chord lenght: 33 cm

Bar diameter: 0,5 cm.

Inventory number: 664

Weight: 41,24 gr.

82. Bronze hairpin with rhomb head and two rhomb swallows. Between head and the first swallow and also between these two there is a decoration which consists of two parallel incised lines. Good green patina (Fig. 4/6; Pl. VII/1).

Dimensions: Length: 13 cm

Bar diameter: 0,4 cm.

Head diameter: $1,2 \times 1,2$ cm.

Inventory number: 657

Weight: 30 gr.

83. Bronze bracelet consisting of 8 rounded curls and sharp peaks. The wire of which the bracelet is made of is rounded. The weak patina is deteriorate in some places (Pl. VI/5).

Dimensions: Curls length: 8 cm

Diameter: 4×4 cm.

Inventory number: 666

Weight: 20,57 gr.

84. Tutuli – a group of 10 tutuli stick each other, most of them have broken edges. The tutulii have round shape, with rhombic and rounded peaks. Each tutul is decorated in the exterior with 4 relief lines, having a pick-up system in the inside. The green patina is deteriorating (Pl. XI/8).

Dimensions: Diameter: $2,5 \times 2,5$ cm.

Height: 1,5 cm.

Inventory number: 598

Weight: 44,62 gr.

85. Tutul in rounded shape, with a broken edge. It has a conical shape with round peak. The decoration consists of 2 parallel relief lines. In the interior there is a pick-up system. Good green patina (Pl. XIII/2).

Dimensions: Diameter: $1,8 \times 1,8$ cm.

Height: 1,4 cm.

Inventory number: 574

Weight: 2,70 gr.

86. Bronze bracelet, round in section, with sharp heads, twisted casting. Green patina (Pl. VI/1).

Dimensions: Diameter: 0,5 cm.

Chord length: 16 cm.

Inventory number: 628

Weight: 278,46 gr.

87. Hairpin made out of bronze with round head, with swallows that start right from the head. The body is round in section, thick to the peak. Good green patina (Pl. VII/3).

Dimensions: Length: 22 cm.

Head diameter: 2 cm.

Body diameter: 0,5 cm.

Inventory number: 661

Weight: 46,66 gr.

88. Hairpin obtained by casting, with round shape, with rhombic head, thin to the top. Green patina, degraded in some places (Pl. VII/4).

Dimensions: Length: 33 cm.

Head diameter: 1,5 cm.

Body diameter: 0,5 cm.

Inventory number: 656

Weight: 41,20 gr.

89. Bronze hairpin with a spherical head, the rod presents three successive thickenings, the spherical head of the hairpin is ornamented with a star on 4 corners, this being shaded and formed by agglutinating 4 triangles to a circle. Between the parallel thickenings there are parallel incisions, and the thickenings are ornamented consisting of shaded triangles. The green patina has in some places traces of strongly corrosion (Pl. VII/2).

Dimensions: Length: 19,5 cm.

Body diameter: 0,5 cm.

Inventory number: 660

Weight: 33,36 gr.

90. Bronze hairpin with ellipsoidal head, the curved hairpin body ending in two parallel thickening which are decorated with the incision that join forming triangles. The hairpin's body is ornamented with incised parallel lines in arranged in group of 4 circular lines and with garlands. The green patina is strongly degraded in some places (Pl. VII/5).

Dimensions: Length: 37 cm.

Head diameter: 1,8 cm.

Body diameter: 0,5 cm.

Inventory number: 658

Weight: 51 gr.

91. Bronze hairpin with spherical head, curved body in the upper part, with 3 thicknesses ornamented with bands of parallel incised lines. The spherical head is ornamented by shaded triangles made of very fine incisions. Green patina (Pl. VII/6).

Dimensions: Length: 33 cm.

Body diameter: 0,5 cm.

Inventory number: 659

Weight: 41,10 gr.

List of figures and plates

Fig. 1. The map of the most important findings of bronze deposits in Caransebes area

Fig. 2. Zăgujeni – Dealu Mare

Fig. 3. Belt

Fig. 4. 1–2 axe, 3–4 bracelet, 5-necklace, 6–7 hairpin, 8 tutul

Fig. 5. Beads necklace

Pl. I. Belt

Pl. II. Belt

Pl. III. Belt

Pl. IV. Bracelets

Pl. V. Bracelets

Pl. VI. 1–2,5 Bracelets; 3–4 Necklaces

Pl. VII. Hairpins

Pl. VIII. Tutuli

Pl. IX. Tutuli

Pl. X. Tutuli

Pl. XI. Tutuli

Pl. XII. Tutuli

Pl. XIII. 1–4 tutuli; 5–9 buttons

Pl. XIV. 1–4 earrings; 5 Buttons; 6–7 Buttons

Bibliography

- Bejenariu, 2007 = I. Bejenariu, *Depozitul de bronzuri de la Brâglez*, Editura Mega, Cluj-Napoca, 2007.
- Bozu 1982 = O. Bozu, Depozitul de bronzuri de la Fizeș, în *Studii și Comunicări de Istorie*, 4, Caransebeș 1982, pp. 135–140.
- Dîmbovița 1977 = M. Petrescu Dîmbovița, *Depozitele de bronzuri din România*, Editura Academiei, București 1977.
- Gogâltan 1999–2000 = F. Gogâltan, Aspecte privind metalurgia bronzului în bazinul carpatic. Ciocanele și nicovalele cu toc de înmănușare din România, în *Ephemeris Napocensis*, IX–X, Cluj-Napoca 1999–2000, pp 5–59.
- Rusu 1960 = M. Rusu, Dokimmeriiskie detalii konskoi sbrui iz Transilvanii, în *Dacia Recherches et découvertes archéologiques en Roumanie*, București 1960, pp. 161–180.
- Săcărin 1981 = C. Săcărin, Depozitul de bronzuri de la Ticvaniul Mare (județul Caraș-Severin), în *Banatica* 6, Reșița 1981, pp. 97–106.

DEPOZITUL DE BRONZURI DE LA ZĂGUJENI (II), JUD. CARAȘ-SEVERIN (Rezumat)

Descoperit în urma unei cercetări de teren organizată de Muzeul Județean de Etnografie și al Regimentului de Graniță Caransebeș, de un colectiv format din Petru Bona, Marian Gumă și Octavian Popescu, în extravilanul satului Zăgujeni, comuna Constantin Daicoviciu, în locul numit de localnici Dealu Mare, (Fig. 2) în anul 1996.

Având în componență celturi, tutuli, brățări, coliere, verigi, ace, butoni, spirale de sîrmă de bronz și un sirag de mărgelă din chihlimbar cu o amuletă din piatră, depozitul este unul dintre cele mai mari descoperite pe teritoriul Banatului Montan.

O piesă importantă a depozitului este centura (Fig. 3; Pl. I,II) confecționată dintr-o foaie de bronz cu capetele îngustate. Deși a fost îndoită în momentul îngropării depozitului, acum prezentându-se ca un manșon. Atât cât putem observa pe partea ei exterioară, ea este decorată cu linii incizate în formă de U sau cercuri precum și linii punctate în formă de V spre capătul piesei. Asemenea piese au fost descoperite în depozitele de la Fizeș, Gușterița II, Pecica II, Șpălnaca II, Uioara de Sus. Toate aceste depozite sunt încadrate cronologic în seria Cincu – Suseni.

Celtul cu corpul înalt (Fig. 4/1; Pl. III/2) prin forma sa, cât și prin decor își găsește analogii în depozitele de la Aiud, Șpălnaca II, Uioara de Sus, Fizeș, aparținând seriei Cincu – Suseni.

Celtul cu aripioare (Fig. 4/2; Pl. III/1) are bune analogii în depozitul de la Ticvaniul Mare. Celturi cu aripioare asemănătoare ca formă și mărime întâlnim și în depozitele de la Gușterița, Hortinești, Sighetul Marmăției, Sîrbi. Toate acestea au fost încadrate în HaA1, aparținând seriei Cincu – Suseni.

Celtul ciocan (Pl. III/3) din depozitul de la Zăgujeni este un celt care își găsește analogii în depozitele de la Aiud, Arad II.

Pentru acest tip de celt, Florin Gogâltan prezintă toate descoperirile din spațiul românesc, cât și încadrarea cronologică a acestor piese, care după părerea autorului sunt încadrate în seria Cincu-Suseni.

Desigur discutarea cronologiei și încadrării cronologice a acestor piese, este o problemă mult mai serioasă și analitică a tuturor depozitelor descoperite pe teritoriul Banatului.

Brățările (Fig. 4/3,4; Pl. IV,V,VI/1,2,6) din depozitul de la Zăgujeni sunt identice sau apropiate cu cele descoperite la Ticvaniul Mare, Berzeasca, care sunt încadrate în seria Cincu – Suseni.

În cea ce privește colierele (Fig. 4/5; Pl. VI/3,4) din componența depozitului și acestea au fost încadrate în aceeași perioadă, respectiv, seria Cincu-Suseni.

Același tipuri de ace de par (Fig. 4/6,7; Pl. VII), ca și în depozitul în discuție, se regăsesc și în alte depozite din România, încadrate tot în seria Cincu – Suseni.

Tutuli și butonii (Pl. VIII, IX, X, XI, XII, XIII, XIV), în număr mare se încadrează conform analogiilor din alte depozite, tot în seria Cincu – Suseni.

În concluzie analiza pieselor din componența depozitului, precum și analogiile cu piese descoperite în alte depozite din România și din teritoriile învecinate, depozitul de la Zăgujeni este încadrat în seria Cincu – Suseni.

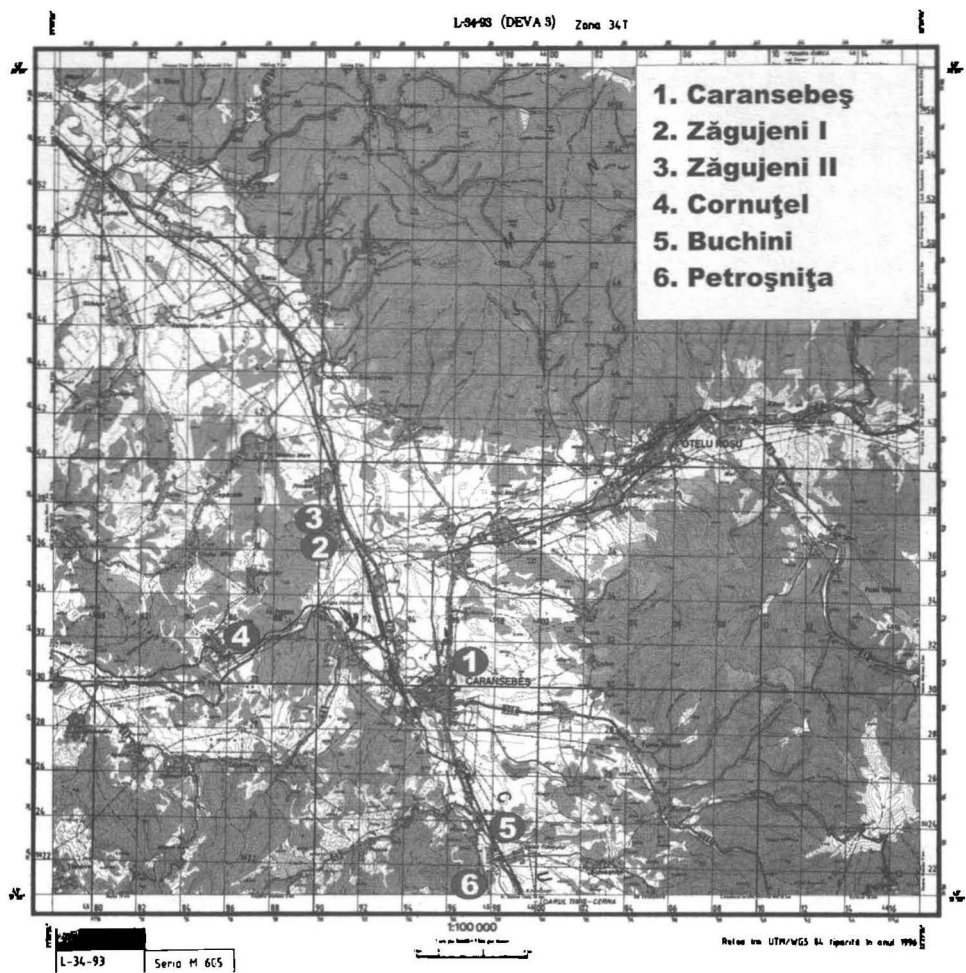


Fig. 1. The map of the most important findings of bronze deposits in Caransebes area



Fig. 2. Zăgujeni – Dealu Mare
www.cimec.ro / www.muzeul-caransebes.ro

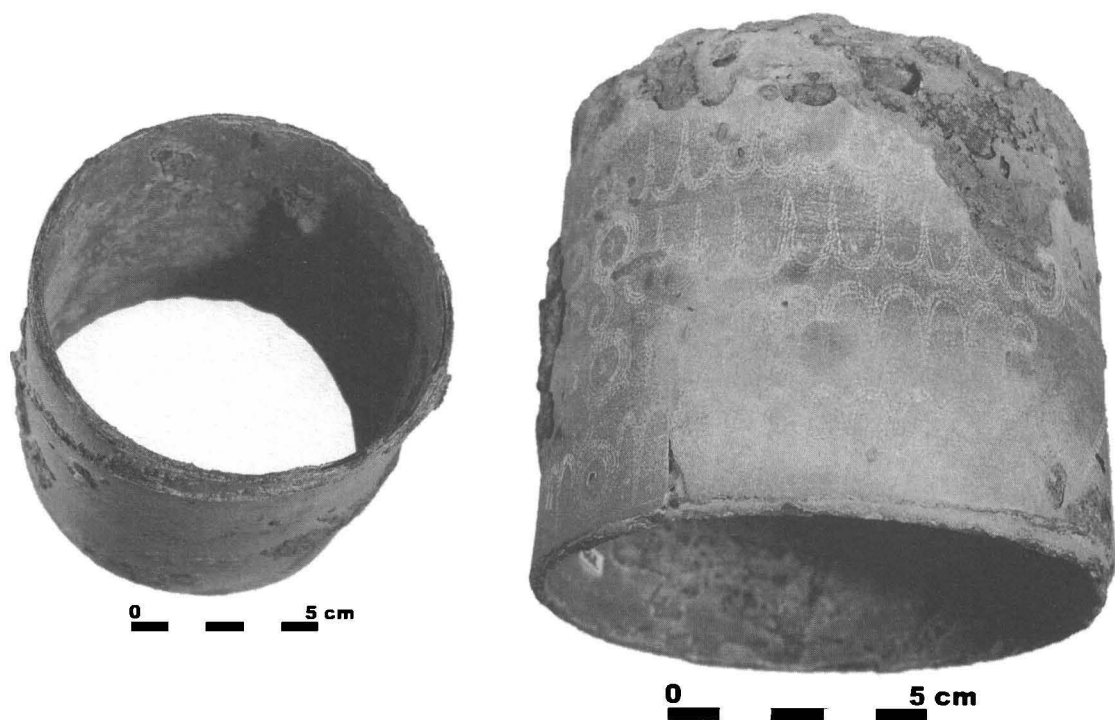


Fig. 3. Belt

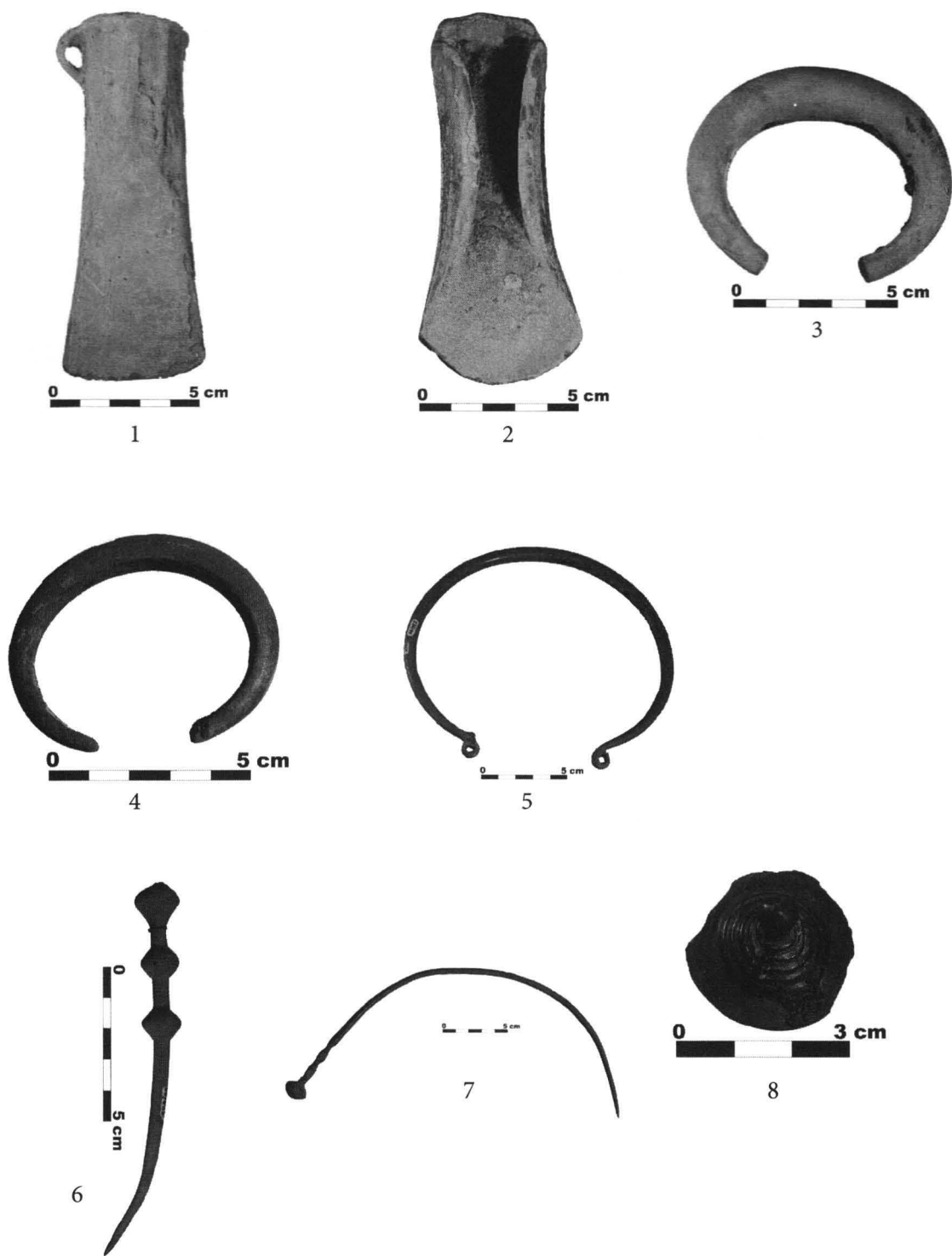


Fig. 4. 1-2 Celt, 3-4 Bracelet, 5-Necklace, 6-7 Hairpin, 8 Tutul

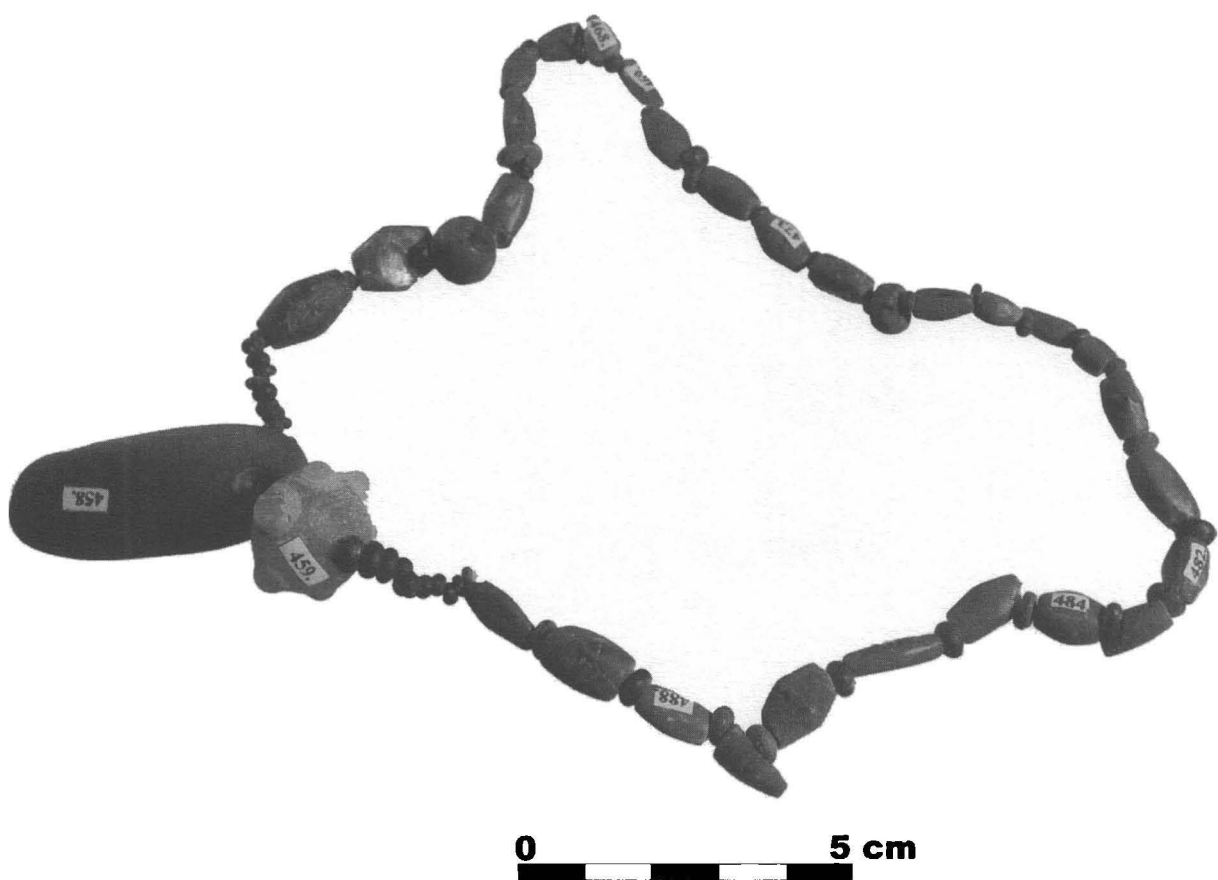
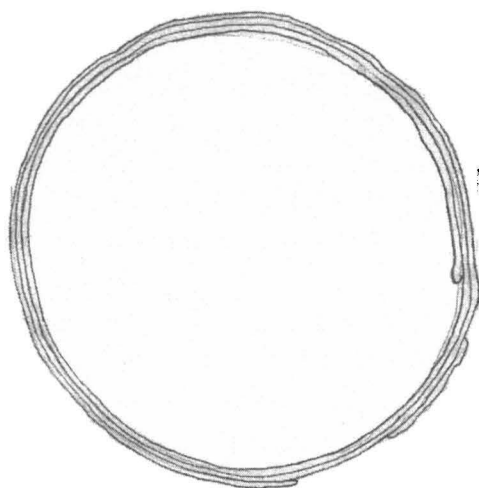
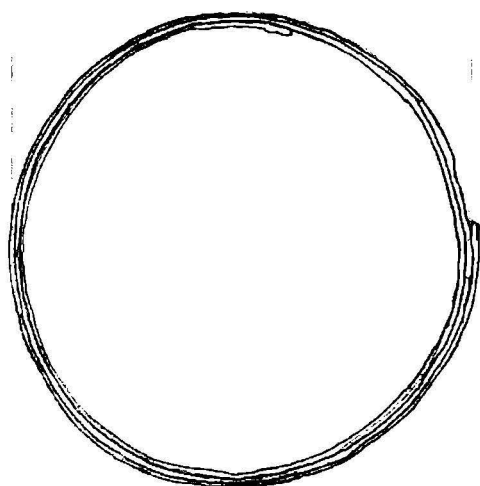
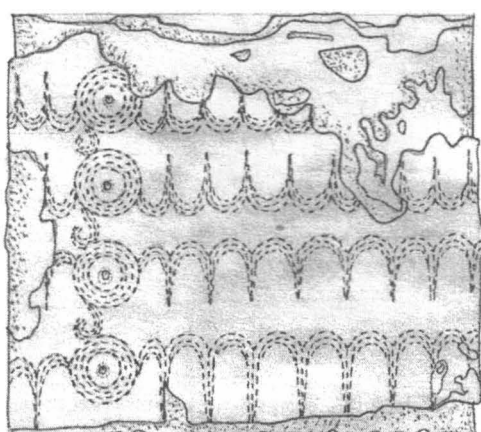
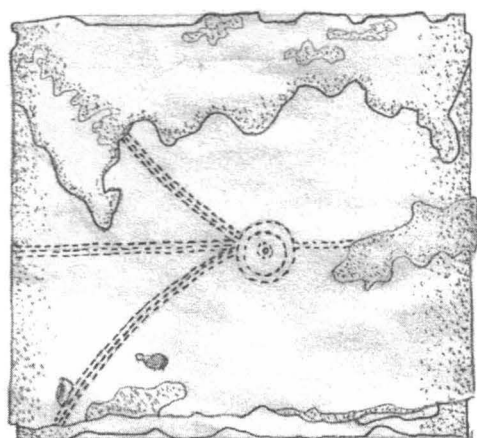
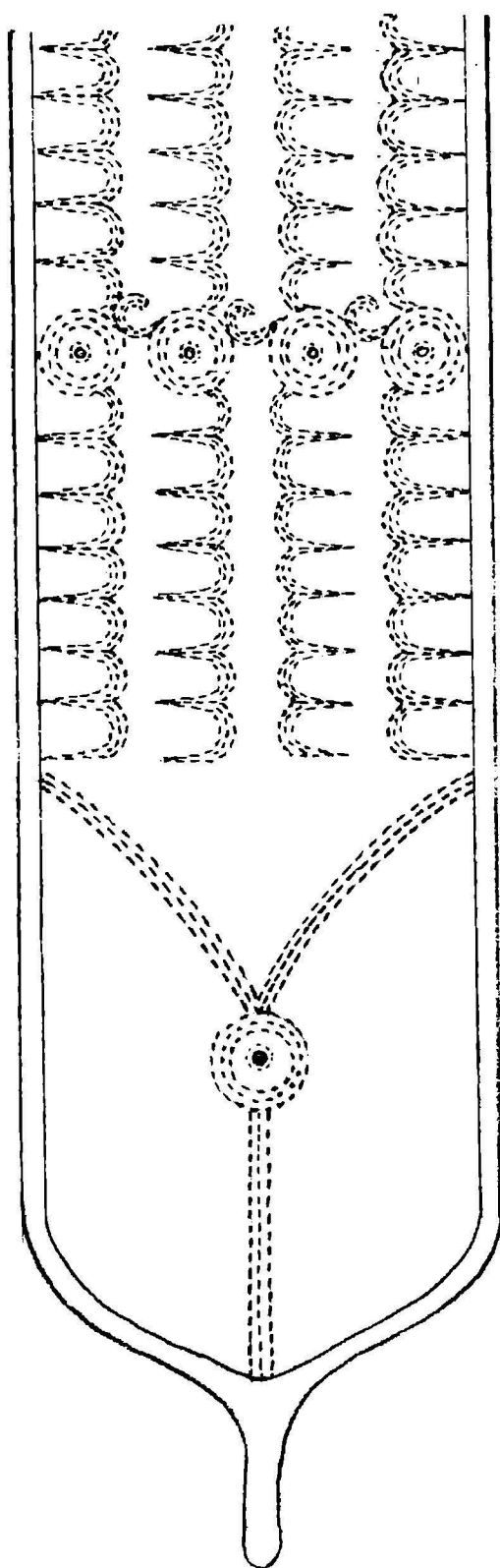


Fig. 5. Beads necklace



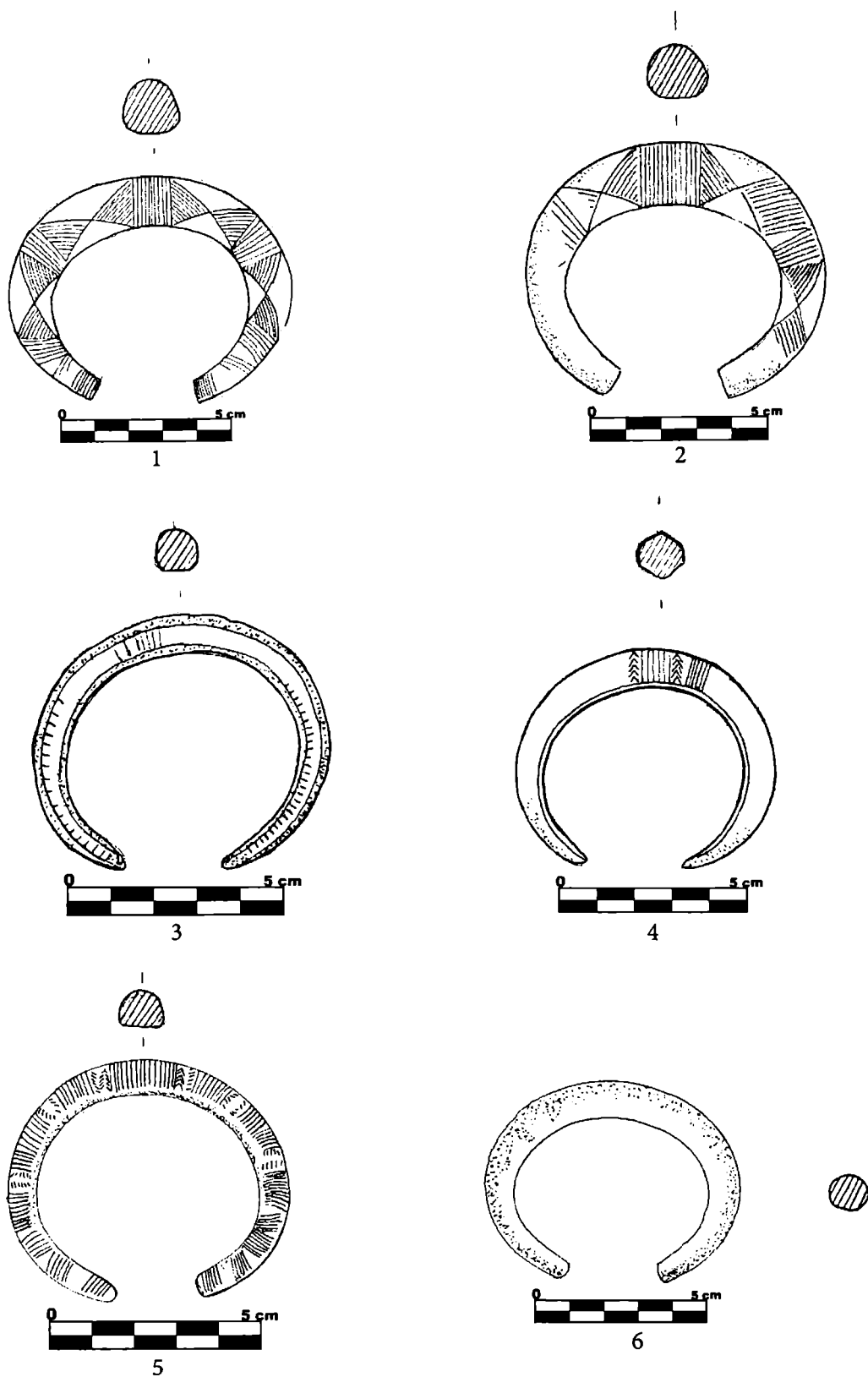
Pl. I. Belt



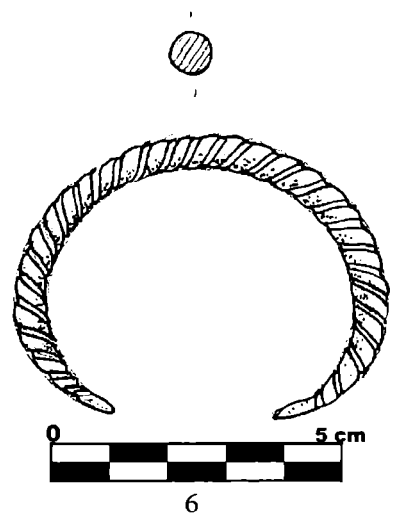
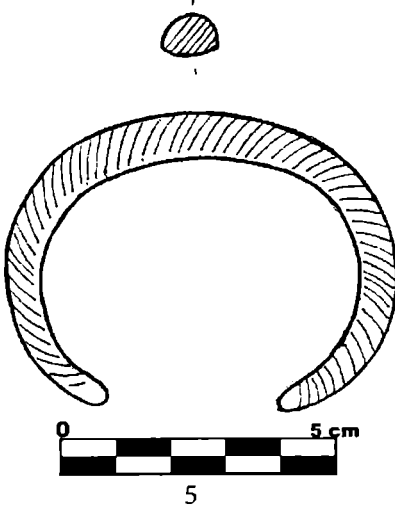
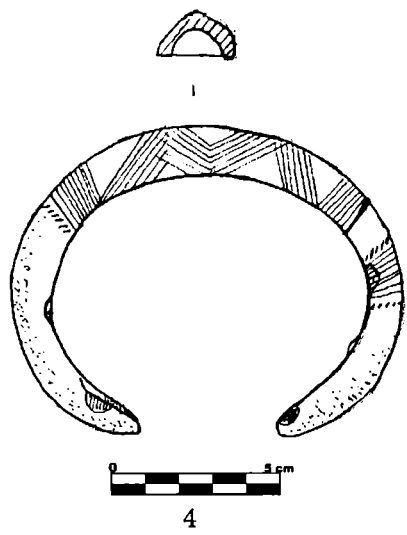
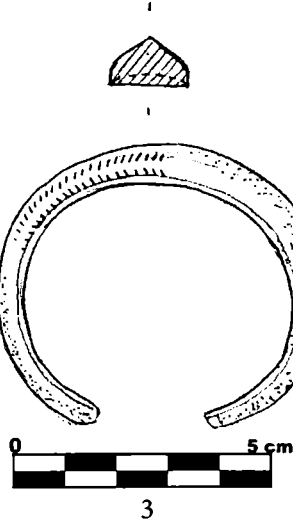
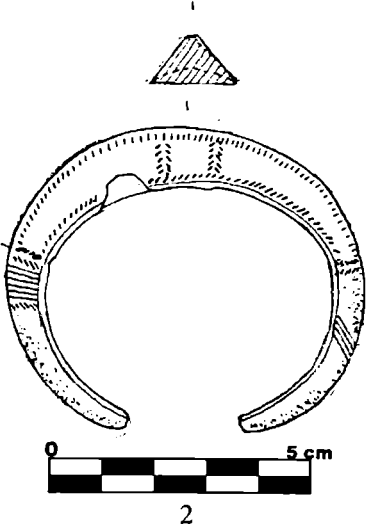
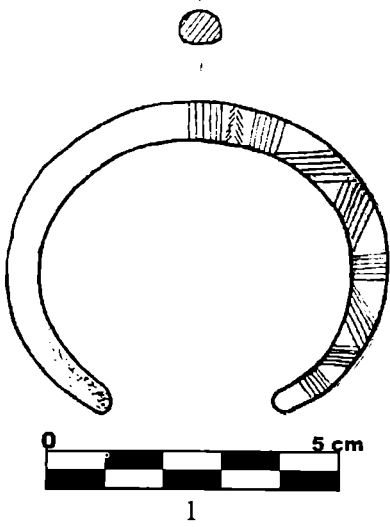
Pl. II. Belt



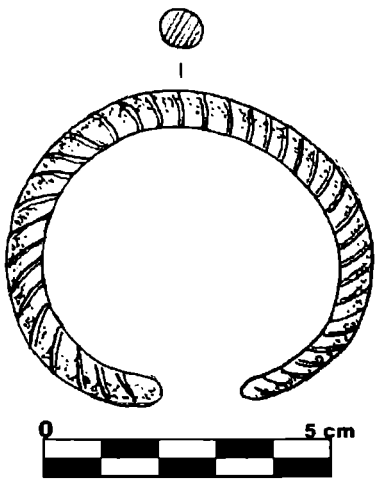
Pl. III. Axes



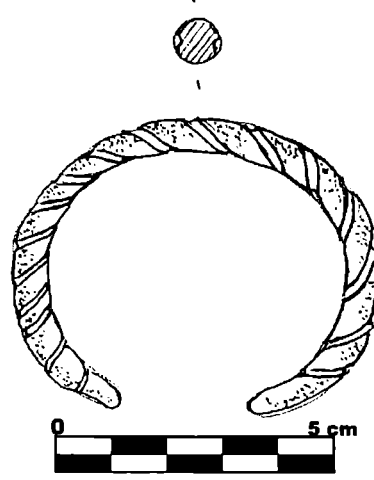
Pl. IV. Bracelets



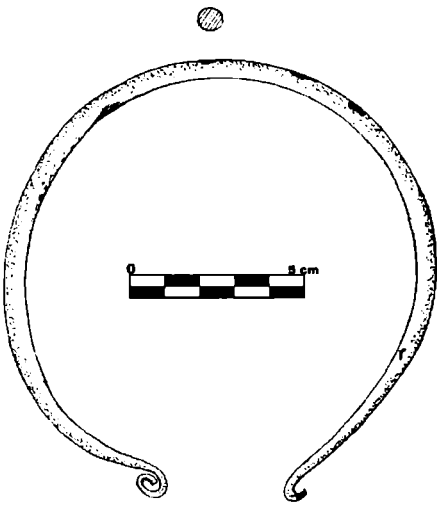
Pl. V. Bracelets



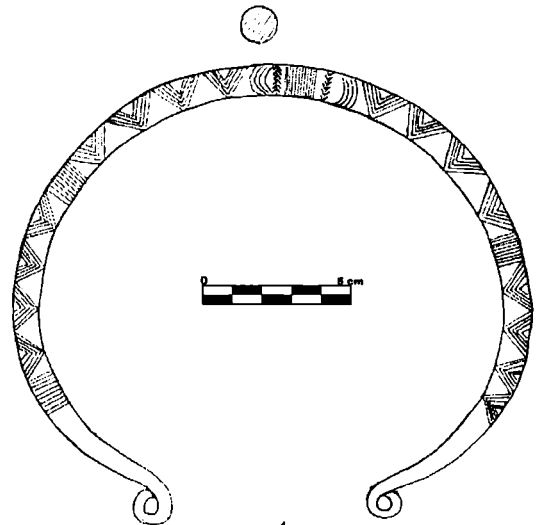
1



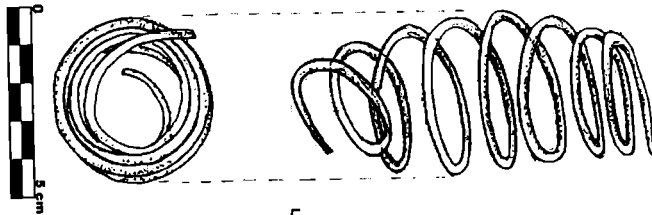
2



3

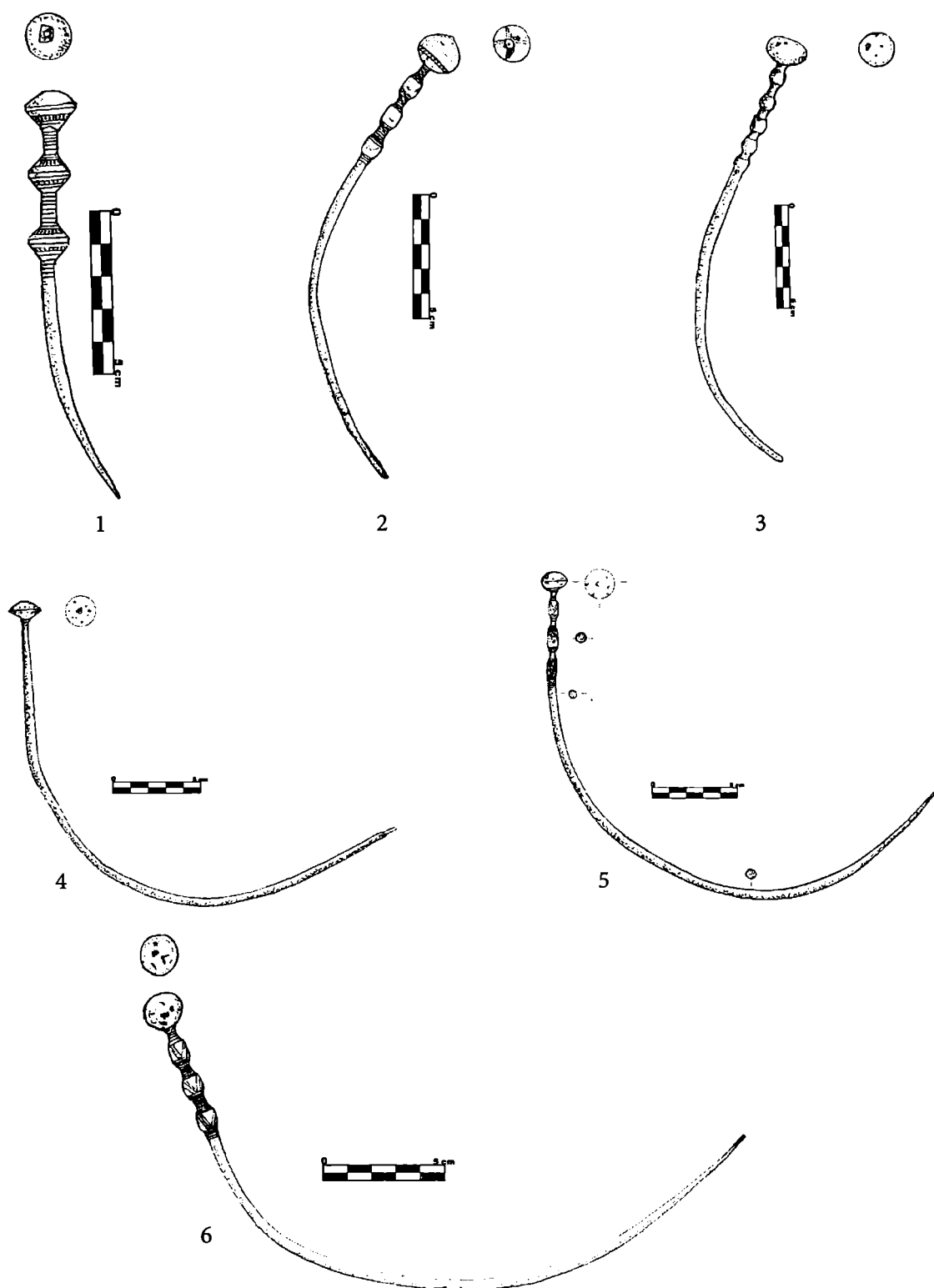


4

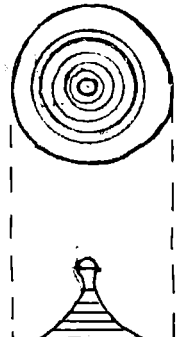
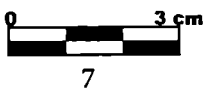
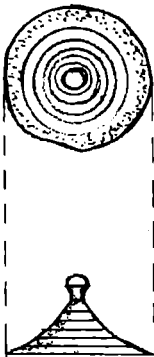
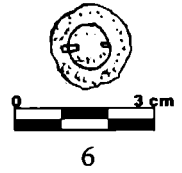
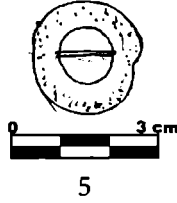
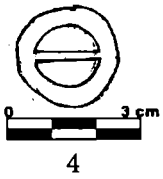
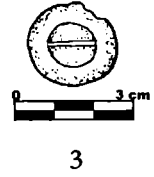
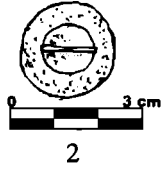
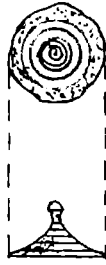
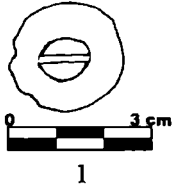


5

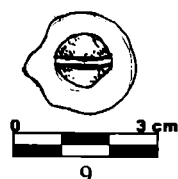
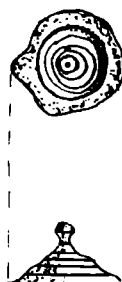
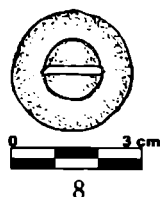
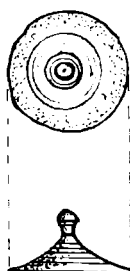
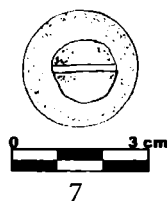
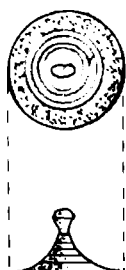
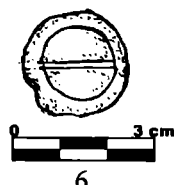
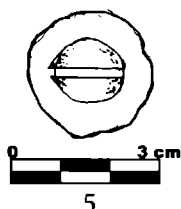
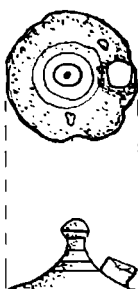
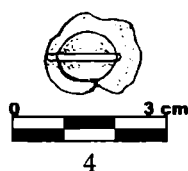
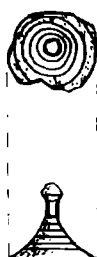
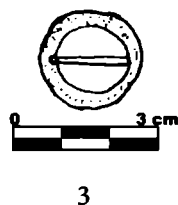
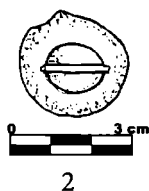
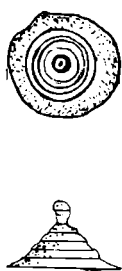
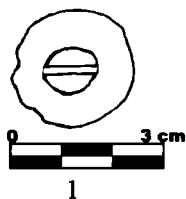
Pl. VI. 1-2, 5 Bracelets; 3-4 Necklaces



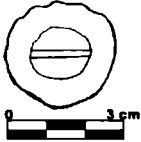
Pl. VII. Hairpins



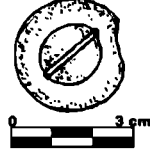
Pl. VIII. Tutuli



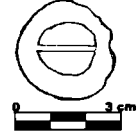
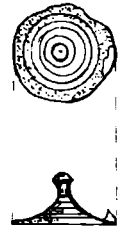
Pl. IX. Tutuli



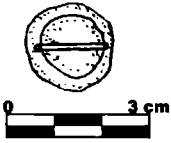
1



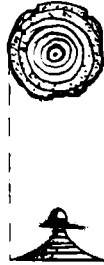
2



3



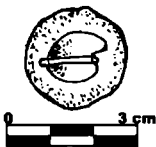
4



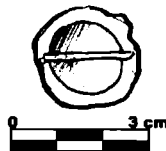
5



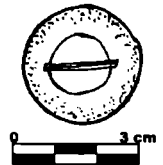
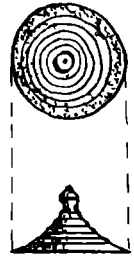
6



7

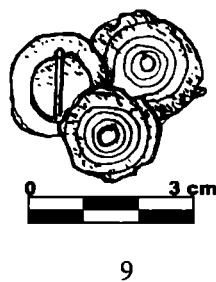
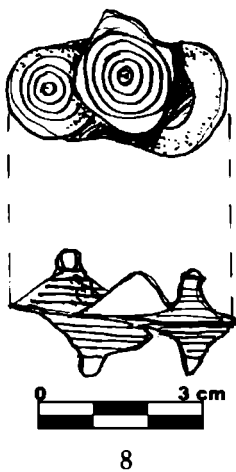
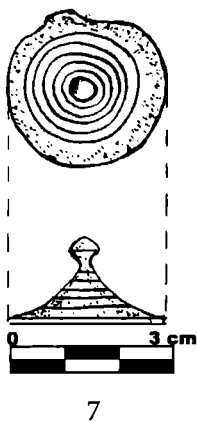
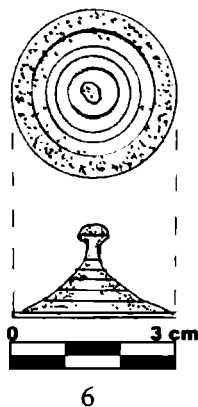
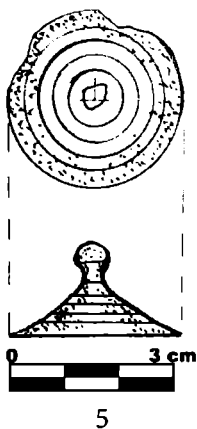
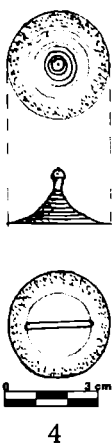
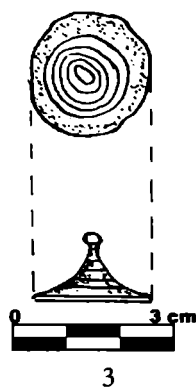
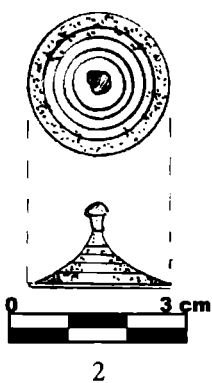
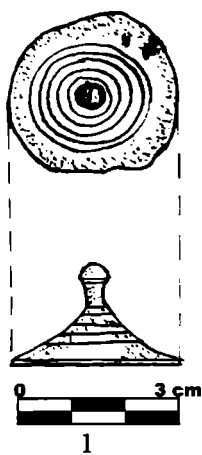


8

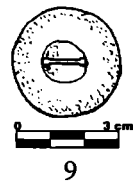
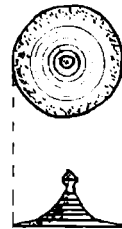
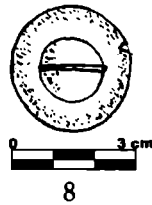
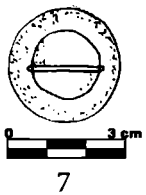
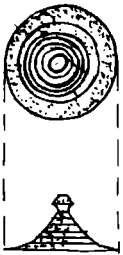
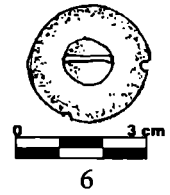
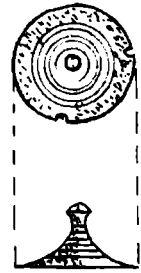
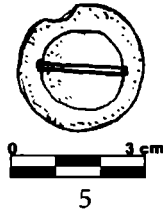
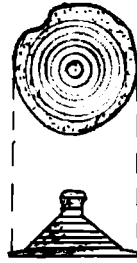
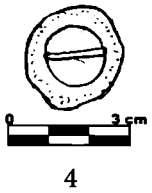
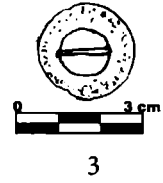
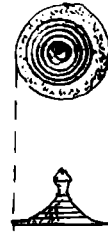
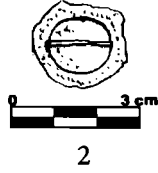
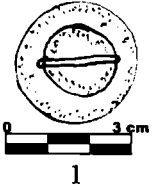
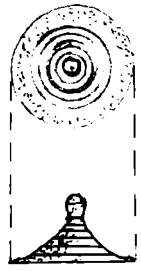


9

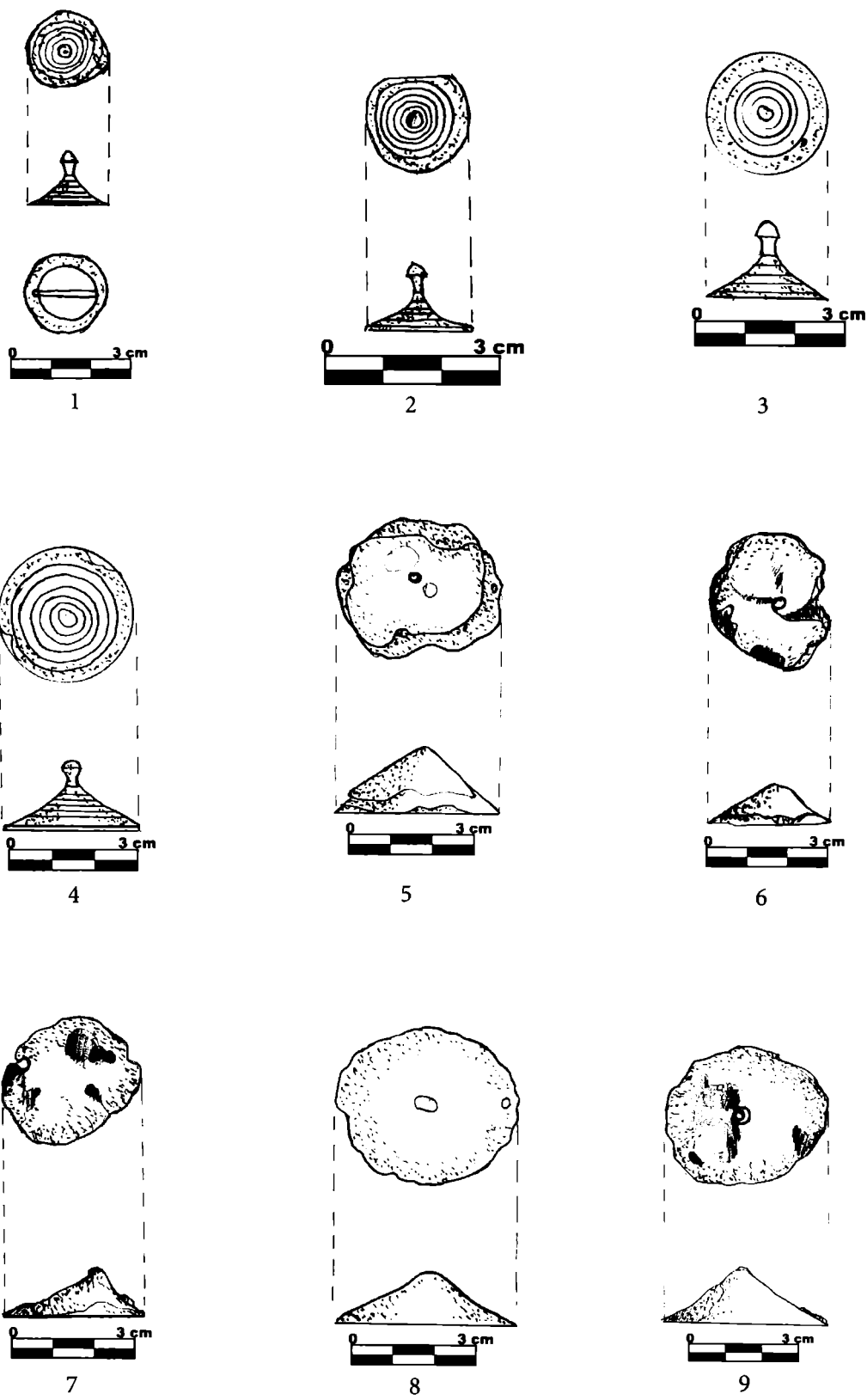
Pl. X. Tutuli



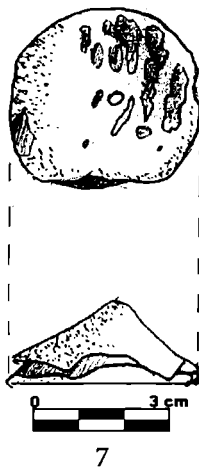
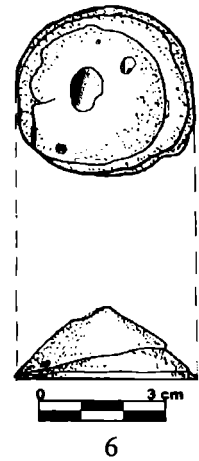
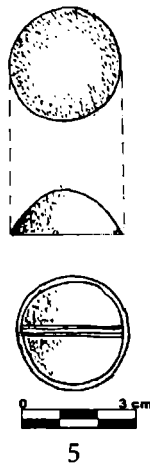
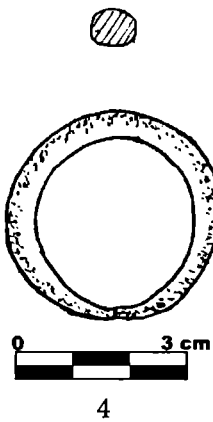
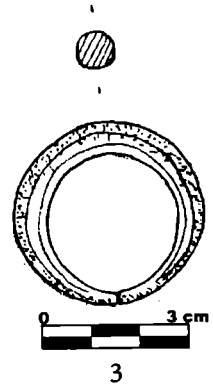
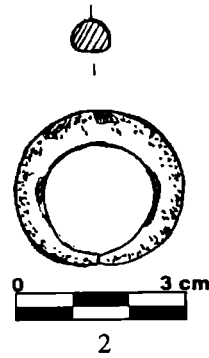
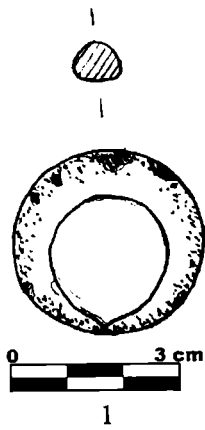
Pl. XI. Tutuli



Pl. XII. Tutuli



Pl. XIII. 1-4 tutuli; 5-9 buttons



Pl. XIV. 1-4 Earrings; 5 Button; 6-7 Button