

**GREEK IMPERIAL, ROMAN, BYZANTINE AND OTTOMAN
COIN FINDS FROM CAPIDAVA (1966-2006)
IN THE COLLECTION OF THE NATIONAL HISTORY
MUSEUM OF ROMANIA**

Andrei GÂNDILĂ

More than 80 years of archaeological research at Capidava have provided an important number of coin finds, many from a precise archaeological context and some other being accidental finds from the banks of the Danube or the nearby village, which took the name of the ancient fortress. Most of the coins were taken to the Archaeology Museum in Constantza¹ through the care of Dr. Zaharia Covacef who has been supervising the research of an important sector of the fortress for the past thirty years. Coins from other sectors of the fortress were brought to Bucharest, to the Archaeological Institute² or to the National History Museum.

A thorough analysis of the coin circulation at Capidava during its existence under Roman rule is beyond the scope of this article. Nevertheless, some observations are required in order to understand the current structure of the coin finds. The archaeological excavations inside the fortress uncovered only the upper levels, corresponding to the Middle and Early Byzantine stages³. Consequently,

¹ CUSTUREA, CLIANTE 2006, p. 419-434; OCHEȘEANU 2006, p. 78-80; CUSTUREA 2004-2005, p. 495, 507-508; CUSTUREA, VERTAN, TALMAȚCHI 1999, p. 351; *Idem* 1998, p. 316-317; *Idem* 1997, p. 376-378; VERTAN, CUSTUREA 1995-1996, p. 309-321; PAPASIMA, VERTAN 1995-1996, p. 272-273, 276; CUSTUREA 1995-1996, p. 301-307; VERTAN, CUSTUREA 1992, p. 384-386; *Idem* 1988-1989, p. 378-380, 385; *Idem* 1986, p. 298; CUSTUREA 1986, p. 277; VERTAN, CUSTUREA 1982, p. 282; *Idem*, 1981, p. 335; *Idem* 1980, p. 355; COVACEF 1980, p. 268-273; OCHEȘEANU, PAPUC 1976, p. 216, 218-219; DIACONU 1958, p. 238-244.

² POENARU-BORDEA 1976-1980, p. 247-251; POENARU-BORDEA 1983-1985, p. 169-176.

³ OPRÎȘ 2003; FLORESCU, COVACEF, OPRÎȘ ET ALII 1983-1992 and 1993-2006; COVACEF 1999, p. 137-184; FLORESCU, COVACEF 1988-1989, p. 197-247; COVACEF 1988-1989, p. 187-196; *Eadem* 1983, p. 361-366; *Eadem* 1980, p. 269-271; *Eadem* 1979, p. 175-178; CHELUȚĂ-GEORGESCU 1978, p. 211-222; RĂDULESCU 1970, p.311-323; FLORESCU 1975, p.361-372; FLORESCU, CHELUȚĂ-GEORGESCU 1975, p.77-85; *Idem* 1974, p.417-435; FLORESCU 1967, p.259-267; *Idem* 1965, p.529-36; FLORESCU, FLORESCU, CEACALOPOL 1962, p.693-704; *Idem* 1961, p.571-579; Florescu 1961, p.199-210; FLORESCU, FLORESCU 1959, p.617-627; FLORESCU, FLORESCU, DIACONU 1958; FLORESCU 1959, p.555-559;

the Early Roman phase is underrepresented in finds and will probably remain so until the excavations will reach the lower layers of the settlement.

A brief review of the published coin finds, including the ones in this article, shows that out of a total of 523 specimens, only⁴ 42 coins can be described as early Roman/ Greek Imperial issues⁵, while 212 specimens are Late Roman (4th-5th c.), followed by 170 Early Byzantine coins (6th-7th c.), 2 from the "Dark Age", a number of 92 specimens dated to the Middle-Byzantine period and finally 5 Ottoman coins from the 17th-18th century. A statistical approach of the overall coin circulation at Capidava would be inappropriate until the archaeological research will progress to the earlier levels. As already intimated, the current situation provides an unbalanced ratio between Roman and Byzantine issues. Moreover, a large number of the early specimens were accidental finds, outside the walls of the fortress.

The coins published in this study were found in the past forty years and cover a long period in the history of Capidava, with the earliest specimen being a denarius of Septimius Severus and the latest an Ottoman para of Selim III. As the Early Byzantine coins were recently given special attention⁶, only three specimens, recently uncovered in a box of uncleaned coins, are included in the catalogue. A whirlwind tour through the catalogue gives us the opportunity to notice new entries in the overall list of finds: the coins of Carcalla, Elagabal, Licinius II, Eudoxia, Leo I, Leo VI, Roman I, the Latin and Bulgarian imitations, Selim III and Mustafa III are the first recorded specimens at Capidava. As expected, the bulk is formed by late Roman coins, adding up to a total of 209 published specimens, which permits a new statistical approach for this period (table 1)⁷.

Doubtlessly, the most important additions are the two *folles* from the so-called "Dark Age", when the former Late Roman province of Scythia was left outside the borders of the Byzantine Empire. Given the scarcity of information for this period, the coins are an important criterion for assessing the relations between the Empire and its former possessions at the Lower Danube⁸. Although the Roman administration abandoned the Danube fortresses in Scythia early in the 7th century, fresh coins continued to arrive on these territories in the following centuries. Thus, a *folles* of Justinian II was retrieved from Topalu⁹, a few kilometres lower on the Danube and two *folles* attributed to Leo VI and Roman I were found and Hârșova (ancient Carsium)¹⁰, not far from Capidava.

Idem 1949, p.130-131; Idem 1945-1947, p.209-220; Idem 1946, p.325-343; Idem 1937-1940, p.345-351; Idem 1935-1936, p.351-386; Idem 1927-1932, p.483-515.

⁴ For a similar situation see: POENARU-BORDEA 2003, p.171, where only 10% of the coin finds were early imperial issues.

⁵ Of which at least 28 specimens are dated to the 3rd century.

⁶ GÂNDILĂ 2006-2007, forthcoming.

⁷ For previous attempts to draw some statistical guiding marks on the late roman coin circulation at Capidava see: POENARU-BORDEA 1983-1985, p.174, table I.

⁸ For 9th - 10th century coin finds in Dobroudja see: OBERLÄNDER-TÂRNOVEANU 1996, p.110-113 and fns. 67 and 92.

⁹ POENARU-BORDEA, DONOIU 1981-1982, p.238, n. 6.

¹⁰ CUSTUREA 1986, p.277, n. 10 and n. 12.

Unfortunately, the archaeological evidence of the cemetery¹¹ close to Capidava cannot provide relevant information regarding the life during the “dark” centuries. Nevertheless, the recent coin finds from Leo VI and Roman I are an important addition to our understanding of the economic relations between the former Roman centres and the Byzantine Empire. Settlements from the Black Sea shore provide a far larger number of specimens from the “Dark Age” due to the active presence of the Imperial fleet and it is possible that the few mentioned coins from the Danube coast to be ascribed to a rather indirect relation with the Empire through settlements on the seaside. One may also assume that the presence of the Danubian fleet of Emperor Leo VI, in the conflict with the Bulgarian Kingdom at the end of the 9th century, brought a significant number of coins in the region¹².

The Latin and the Bulgarian imitations are also significant additions to the history of Capidava during the late Middle Byzantine age. Although these finds are not completely unknown in Dobroudja¹³, the specimens found at Capidava are particularly important. The coin finds inside the walls of the fortress end after 1055¹⁴, which led to the suggestion that Capidava was deserted soon after. Nevertheless, the strategic importance of the fortress, located at an important crossing point over the Danube, could not have been overlooked by the Byzantine Empire or its Northern enemies. Although the two imitations were not found in an archaeological context, they remain an important clue to the activities underwent in the area surrounding the former Byzantine town, in the eve of the Tatar invasion of 1241.

In what concerns the Islamic finds, the two specimens published here are not the first such finds recorded at Capidava¹⁵. Still, the increase in coin finds from the Late Middle Ages in Dobroudja might reinforce the idea of a strong community gathered around the deserted ancient fortress on the Danube. It was most likely a Turkish community, but most significant is the continuity of living in an area with a long tradition, echoed by the medieval name of the village: Calakioi – “the village of the fortress”¹⁶.

¹¹ CHELUȚĂ-GEORGESCU 1979, p.179-182.

¹² METCALF 1979, p.42.

¹³ OBERLÄNDER-TĂRNOVEANU 2003, p.398-400, with the bibliography.

¹⁴ CUSTUREA 1995-1996, p.307, n. 83-85.

¹⁵ VERTAN, CUSTUREA 1988-1989, p.385, n. 1353, an AE mangâr from Suleyman II; VERTAN, CUSTUREA, TALMAȚCHI 1998, p.317, n. 1845, an AE mangâr from an uncertain ruler.

¹⁶ POPOIU 2001, p.147; IONESCU-DOBROGIANU 1904, p.424.

| STAGE | COINS | % OF TOTAL | COEFF. COINS/YEAR | % OF TOTAL COEFF. | POSITION |
|--------------|------------|------------|-------------------|-------------------|----------|
| 294-307 | 7 | 4.02 | 0.54 | 2.56 | XIV |
| 307-313 | 7 | 4.02 | 1.17 | 5.55 | VII-VIII |
| 313-318 | 5 | 2.87 | 1 | 4.74 | IX-X |
| 318-324 | 1 | 0.57 | 0.17 | 0.81 | XVII |
| 324-330 | 6 | 3.45 | 1 | 4.74 | IX-X |
| 330-335 | 11 | 6.32 | 2.2 | 10.43 | III |
| 335-341 | 17 | 9.77 | 2.83 | 13.41 | II |
| 341-348 | 14 | 8.05 | 2 | 9.48 | IV |
| 348-355 | 5 | 2.87 | 0.71 | 3.36 | XI-XII |
| 355-361 | 20 | 11.49 | 3.33 | 15.78 | I |
| 361-364 | 0 | 0 | 0 | 0 | - |
| 364-378 | 17 | 9.77 | 1.21 | 5.73 | VI |
| 378-383 | 0 | 0 | 0 | 0 | - |
| 383-395 | 14 | 8.05 | 1.17 | 5.55 | VII-VIII |
| 395-408 | 13 | 7.47 | 1 | 4.74 | IX-X |
| 408-425 | 7 | 4.02 | 0.41 | 1.94 | XV |
| 425-450 | 9 | 5.18 | 0.36 | 1.71 | XVI |
| 450-457 | 9 | 5.18 | 1.29 | 6.11 | V |
| 457-474 | 12 | 6.90 | 0.71 | 3.36 | XI-XII |
| 474-491 | 0 | 0 | 0 | 0 | - |
| 491-498 | 0 | 0 | 0 | 0 | - |
| TOTAL | 174 | 100 | 21.1 | 100 | |

Table 1. Late Roman coins at Capidava

CATALOGUE

ROMAN/
GREEK IMPERIAL:

1. Septimius Severus
AR ↓ 1.19g, 15.5mm
RIC IV, Rome
Broken
CAP 1987, Docks, S1
MNIR Inv. 317524.

2. Caracalla
AE ↑ 8.19g, 23mm
Thrace, Deultum
Moushmov 3531
CAP 2003, river bank
MNIR Inv. 317525.

3. Elagabal
AE ⚔ 2.30g, 20.5x16.5mm
Moesia Inferior, Markianopolis
CNGCop. 240
CAP 1974, *passim*
MNIR Inv. 317526.

4. Aurelian
AE ↓ 1.91g, 19.2mm,
CONCORDIA MILITVM
Cyzicus
RIC V/1, 343, period II
Broken, pierced
CAP 1968, BAS SII
MNIR Inv. 317527.

5. Aurelian
AE ↑ 3.83g, 23.5x21mm
ORIENS AVG, Rome, off. E
RIC V/2, 64, period III
Corroded
CAP 1974, *passim*
MNIR Inv. 317528.
6. Aurelian
AE ↑ 2.09g, 23mm
ORIENS AVG
RIC V/2
Bent
CAP 1996, *passim*
MNIR Inv. 317529.
7. Diocletian
AE ↖ 3.3g, 21.5x20.5mm
CONCORDIA MILITVM
Heraclea, off. B
RIC VI, 13, 295-296
CAP 1974, *passim*
MNIR Inv. 317530.
8. Maximianus
AE ↑ 3.26g, 22.3x20.5mm
CONCORDIA MILITVM
Heraclea, off. Δ
RIC VI, 14, y. 295-296
CAP 2002, *passim*
MNIR Inv. 317531.
9. Maximianus
AE ↑ 2.77g, 21.2x20.5mm
CONCORDIA MILITVM
Cyzicus, off. Δ
RIC VI, 15b, y. 295-299
CAP 2005, S4, 1, -0.55m
MNIR Inv. 317532.
10. Maximianus
AE ↑ 5.66g, 27x26mm
GENIO AVGVSTI
Thessalonica, off. B
RIC VI, 30a, y. 308-310
CAP 1974, *passim*
MNIR Inv. 317533.
11. Licinius I
AE ↑ 3.37g, 23.1x21.7mm
IOVI CONSERVATORI
Thessalonica, off. Δ
RIC VII, 59, y. 312-313
CAP 2006, *passim*
MNIR Inv. 315601.
12. Licinius II
AE ↑ 1.82g, 19.3x17.5mm
IOVI CONSERVATORI
Heraclea
RIC VII, 54, y. 321-324
CAP 2004, *passim*
MNIR Inv. 317534.
13. Constantine I
AE ↑ 3.52g, 20.3x18.5mm
PROVIDENTIAE AVGG
Cyzicus, off. Δ
LRBC 1158, y. 324-330
CAP 2002, Docks
MNIR Inv. 317535.
14. Constantine I
AE ↓ 2.46g, 19x18.2mm
GLORIA EXERCITVS
Constantinople
LRBC 1005, y. 330-335
CAP 2001, III, Docks
MNIR Inv. 317536.
15. Constantine I
AE ↑ 1.34g, 16.5x14.5mm
GLORIA EXERCITVS
LRBC, y. 330-335
Broken
CAP 2005, *passim*
MNIR Inv. 317537.
16. Constantine I
AE 1.66g, 18x16.8mm
GLORIA EXERCITVS (?)
LRBC y. 330-337
Burned, melted
CAP 2005, *passim*
MNIR Inv. 317538.

17. Constantine I
AE ↓ 1.35g, 18mm
Victoria? fragments
CAP 1990, *passim*
MNIR Inv. 317539.
18. Constantine I/ Constantius II
AE ↗ 1.56g, 14.2x13.5mm
VOT type
LRBC, y. 341-346
CAP 2005, *passim*
MNIR Inv. 317540.
19. Constantine II
AE ↑ 2.54g, 18x17.5mm
GLORIA EXERCITVS
Thessalonica, off. Γ (?)
LRBC 836, y. 330-335
CAP 2002, III Ṭ72
MNIR Inv. 317541.
20. Constantinopolis
AE ↓ 2.47g, 19.75x17.4mm
CONSTANTINOPOLI
Heraclea, off. Γ
LRBC 908, y. 330-335
CAP 1992, III Z73, 1
MNIR Inv. 317542.
21. Constantius II/ Constans I
AE ↑ 1.43g, 16x15.25mm
VOT XX/ XXX
Cyzicus, off. A
RIC VIII, y. 547-548
Burned, excoriated
CAP 1993, III W73
MNIR Inv. 317543.
22. Constantius II
AE ↙ 3.55g, 21.5mm
FEL TEMP REPARATIO
RIC VIII, y. 348-351
Excoriated
CAP 2006, Tower I, small gate
MNIR Inv. 315599.
23. Constantius II
AE ↖ 2.72g, 16.5x15mm
FEL TEMP REPARATIO
RIC VIII, y. 551-555
CAP 1974, *passim*
MNIR Inv. 317544.
24. Constantius II
AE ↑ 5.17g, 23.8x21.2
FEL TEMP REPARATIO, Γ
RIC VIII, y. 551-555
Burned, melted
CAP 1995, III, Ṭ-U 75, -0.5m
MNIR Inv. 317545.
25. Constantius II
AE ↓ 1.25g, 16x15.3mm
FEL TEMP REPARATIO
Cyzicus
RIC VIII, 115, y. 355-361
CAP 1974, BAS C5, -0.55m
MNIR Inv. 317546.
26. Constantius II/ Julian II
AE ↓ 1.16g, 15.5x12.7mm
SPES REIPUBLICAE (?)
LRBC, y. 355-361
Broken
CAP 1992, Docks SIII
MNIR Inv. 317547.
27. Constantius II/ Julian II
AE ↖ 1.81g, 12.5x12.1mm
SPES REIPUBLICAE
LRBC, y. 355-361
CAP 2002, *passim*
MNIR Inv. 317548.
28. Constantius II/ Julian II
AE ↑ 0.77g, 13.5x12.5
SPES REIPUBLICAE
LRBC, y. 355-363
CAP 1974, *passim*
MNIR Inv. 317549.

29. Constantius II (?)
AE 1.79g, 15.2x13.2mm
GLORIA EXERCITVS
LRBC, y. 335-341
CAP 1996, III, T75
MNIR Inv. 317550.
30. Constantius II (?)
AE 4.31g, 17x16mm
FEL TEMP REPARATIO (?)
CAP 1974, *passim*
MNIR Inv. 317551.
31. Constantius Gallus
AE ↓ 3.94g, 19x17mm
FEL TEMP REPARATIO
Constantinople, off. Γ
RIC VIII, 114, y. 351-355
CAP 2006, BAS I, N52, 0.6m
MNIR Inv. 315598.
32. Constantius Gallus
AE ↑ 2.96g, 17.5x17mm
FEL TEMP REPARATIO
Cyzicus, off. A
RIC VIII, 107, y. 351-354.
CAP 2002, III T72
MNIR Inv. 317552.
33. Julian II
AE ↑ 1.55g, 16.5x16mm
FEL TEMP REPARATIO, M
RIC VIII, y. 355-361
CAP 1974, *passim*
MNIR Inv. 317553.
34. Valens
AE ↑ 1.67g, 18.5x16.5mm
GLORIA ROMANORVM
Constantinople
LRBC 2108, y. 367-375
CAP 1974, *passim*
MNIR Inv. 317554.
35. Valens (?)
AE ↓ 1.22g, 15.9x14.75mm
SECVRITAS REIPVBLICE
CAP 1974, *passim*
MNIR Inv. 317555.
36. Valens/ Valentinian I
AE ⚔ 1.40g, 16x15.5mm
GLORIA ROMANORVM 8
LRBC y. 367-375
CAP 1992, Docks SIII
MNIR Inv. 317556.
37. Valentinian I
AE ↗ 2.28g, 18.5x16.75mm
SECVRITAS REIPVBLICAE
Siscia, LRBC y. 367-375
Broken
CAP 1993, V73, -1.43m
MNIR Inv. 317557.
38. Valentinian II
AE ↑ 1.11g, 13.8x12.4mm
SALVS REIPVBLICAE
Constantinople, off. A
LRBC 2183, y. 383-392
CAP 2002, *passim*
MNIR Inv. 317558.
39. Valentinian II
AE ↑ 1.03g, 13x12mm
SALVS REIPVBLICAE
LRBC 2183, y. 383-392
CAP 2002, *passim*
MNIR Inv. 317559.
40. Arcadius
AE 0.65g, 13.5x12mm
SALVS REIPVBLICAE,
Constantinople
LRBC 2185, y. 383-392
Burned
CAP 1997, III, T-T74, -0.7m
MNIR Inv. 317560.

41. Eudoxia
AE 1.81g, 16.5x15mm
SALVS REIPUBLICAE
RIC X, 101-105, y. 401-405
CAP *passim*
MNIR Inv. 317561.
42. Honorius
AE ↓ 1.21g, 11x10mm
VICTORIA AVGG
Rome, y. 410-423
RIC X, 1357=LRBC 828
CAP 2002-2006, *passim*
MNIR Inv. 317562.
43. Honorius/ Theodosius II
AE 2.35g, 15.5x14.5mm
GLORIA ROMANORVM
RIC X, y. 408-423
CAP, *passim*
MNIR Inv. 317563
44. Honorius/ Theodosius II
AE ↑ 1.52g, 16x14mm
GLORIA ROMANORVM
Constantinople, off. Γ (?)
RIC X, 399-400, y. 408-423
CAP, *passim*
MNIR Inv. 317564
45. Theodosius II
AE ↙ 2.02g, 15.75x14.75mm
GLORIA ROMANORVM
RIC X, y. 406-408
CAP 1990, III, Z75, - 0.6 m
MNIR Inv. 317565
46. Theodosius II
AE ↑ 0.56g, 11x10mm
CONCORDIA AVG
Constantinople
RIC X, 433, y. 425-435
CAP 2002-2006, *passim*
MNIR Inv. 317566
47. Theodosius II
AE 0.71g, 9.2x8.7mm
Cross in wreath (?),
RIC X, y. 425-435
CAP 1992, Docks, S III
MNIR Inv. 317567
48. Theodosius II
AE 0.34g, 10x9.25mm
Cross in wreath (?)
RIC X, y. 425-435
CAP 1992, Docks, S III
MNIR Inv. 317568.
49. Theodosius II
AE ↓ 0.73g, 10.6x9.4mm
Cross in wreath
RIC X, y. 425-435
CAP 1992, *passim*
MNIR Inv. 317569.
50. Marcian
AE 0.93g, 11x9.75mm
Monogram
RIC X, y. 450-457
CAP 1992, III, T73-U73, -1m
MNIR Inv. 317570.
51. Marcian
AE 0.66g, 9.3x8.8mm
Monogram
RIC X, y. 450-457
CAP 1996, III, *passim*
MNIR Inv. 317571.
52. Marcian
AE ↑ 0.79g, 8.5mm
Monogram
RIC X, y. 450-457
CAP 2005, *passim*
MNIR Inv. 317572.

53. Marcian/ Anastasius I
 AE 0.39, 10x8.6mm
 Monogram y. 450-457 or
 491-518
 CAP 1992, Docks, S III
 MNIR Inv. 317573.

54. Leo I
 AE 0.96g, 13.2x10.7mm
 Empress (?)
 RIC X, y.457-474
 CAP *passim*
 MNIR Inv. 317574.

55. Leo I
 AE 0.94g, 12.3x11.6mm
 Empress (?)
 RIC X, y.457-474
 CAP 1997, III, T 74- $\bar{\Gamma}$ 74, -1.50 m
 MNIR Inv. 317575.

56. Leo I
 AE 0.95g, 9.6x8.8mm
 Empress (?)
 RIC X, y.457-474
 CAP 1995, III, T 74, -1.65 m
 MNIR Inv. 317576.

57. Leo I
 AE 0.87g, 10mm
 Empress (?)
 RIC X, y.457-474
 CAP 1994, Docks, S III
 MNIR Inv. 317577.

58. Leo I
 AE ∇ 0.65g, 8.5mm
 Empress (?)
 RIC X, y. 457-474
 CAP 2002-2006, *passim*
 MNIR Inv. 317578.

59. Leo I (?)
 AE 0.73g, 10mm
 Empress (?)
 RIC X, y.457-474
 CAP 02, III, Y72, floor
 MNIR Inv. 317579.

60. Leo I/ Zeno
 AE 1.51g, 13x11.75mm
 Victory (?), Chi-Rho
 RIC X, y. 457-491
 CAP 1995, III, T 74, -1.65 m
 MNIR Inv. 317580.

BYZANTINE:

61. Justin I
 AE ∇ 8.98g, 26.3x24.8mm
 $\frac{1}{2}$ follis, Imitation
 MIBE, X11
 CAP 1974, C5, -0.7m
 MNIR Inv. 317581.

62. Justinian I
 AE ∇ 8.04g, 25.7x23.4mm
 $\frac{1}{2}$ follis, Constantinople, off. Γ
 MIBE, 90, y. 527-537
 CAP 2000, V72, -0.2/3m
 MNIR Inv. 317582.

63. Justinian I
 AE ∇ 3.38g, 15.5x14mm
 $\frac{1}{4}$ follis, Nicomedia
 MIBE, 118b, after 552
 CAP 2005, *passim*
 MNIR Inv. 317583.

64. Leo VI
 AE \downarrow 4.63g, 25.2mm
 Burned, melted
 Follis, Constantinople
 DOC III/2, 8, class 3.
 CAP 2002, *passim*
 MNIR Inv. 317584.

65. Roman I

AE ↓ 5.38g, 27x23.5mm

Follis, Constantinople

DOC III/2, 25, y. 931-944

CAP 2002, *passim*

MNIR Inv. 317585.

66. Basile II and Constantine VIII

AE ↓ 14.00g, 32.5x27.8mm

Anonymous follis, class A

DOC III, 2, var. 48

CAP 2004, river bank

MNIR Inv. 317587.

67. Basile II and Constantine VIII

AE ↓ 10.7g, 28x26.5mm

Anonymous follis, class A

DOC III, 2, var. 24a

CAP 1966, BAS, SII

MNIR Inv. 317586.

68. Basile II and Constantine VIII

AE ↓ 7.07g, 29.5x26mm

Anonymous follis

DOC III, 2, class A

CAP 1974, *passim*

MNIR Inv. 317588.

69. Basile II and Constantine VIII

AE ↓ 8.33g, 29.5x27mm

Anonymous follis, class A

DOC III, 2, var. 39

CAP 1992, *passim*

MNIR Inv. 317589.

70. Roman III

AE ↓ 10.98g, 31x27.6mm

Anonymous follis

DOC III, 2, class B

CAP 2003, I, surface.

MNIR Inv. 317590.

71. Latin Imitation

Billon ↓ 2.19g, 28.35x20.7mm

Stamenon, Constantinople

Module type A

DOC IV/2, 30.1-30.22

CAP 2002, *passim*

MNIR Inv. 317591.

72. Bulgarian Imitation

Billon ↓ 3.50g, 24x23mm

Stamenon, type C

DOC IV/1, 3a.1-3f.2

CAP 2004, river bank

MNIR Inv. 317592.

OTTOMAN EMPIRE

73. Mustafa III

AR 0.38g, 15mm

Para, Islambol, y. 14

NP 639

CAP 2001, river bank

MNIR Inv. 317593.

74. Selim III

AR 0.46g, 16.5mm

Para, Qostantinyeh

NP 713

CAP 2001, river bank

MNIR Inv. 317594.

75. Selim III

AR 0.38g, 15mm

Para, Misr

NP 717

CAP 2001, river bank

MNIR Inv. 317595.

**ROMAN/ GREEK IMPERIAL
UNCERTAIN**

76. Severan dynasty

AE ↓ 1.98g, 16.5x15.7mm

Thrace, Nicopolis ad Istrum

Burned, excoriated

CAP, river bank

MNIR Inv. 317596.

77. 3rd century
 AE ↗ 1.26g, 17.5x15.2mm
 Markianopolis (?)
 CAP 1987, Docks
 MNIR Inv. 317597.
78. Theodosian dynasty
 AE ↑ 1.50g, 12.5mm
 SALVS REIPVBLICAE
 LRBC 2183-85, y. 383-392
 CAP 2005, *passim*
 MNIR Inv. 317598.
79. Theodosian dynasty
 AE 0.58g, 12mm
 SALVS REIPVBLICAE (?)
 CAP 2002, *passim*
 MNIR Inv. 3176599.
80. Theodosian dynasty
 AE 1.35g, 13.5x12.8mm
 SALVS REIPVBLICAE (?)
 LRBC y. 383-392
 CAP 1996, *passim*
 MNIR Inv. 317600.
81. 4th century
 AE ↖ 0.97g, 15.6x13.6mm
 SECVRITAS REIPVBLICAE
 RIC IX, y. 364-378
 CAP 2005, *passim*
 MNIR Inv. 317601.
82. 4th century
 AE ↓ 0.88g, 15.15x13.15mm
 VOT type
 CAP 1974, *passim*
 MNIR Inv. 317602.
83. 4th century
 AE 0.35g
 VOT type, fragment
 CAP 1996, *passim*
 MNIR Inv. 317603.
84. 4th century
 AE 1.09g, 14.75x14mm
 FEL TEMP REPARATIO (?)
 CAP 1995, III, T75, -1.15m
 MNIR Inv. 317604.
85. 4th century
 AE 1.87g, 18.5x17.5mm
 FEL TEMP REPARATIO (?)
 Burned, excoriated
 CAP 1993, III, W73
 MNIR Inv. 317605.
86. 4th century
 AE 1.32g, 15.5x15mm
 Burned, melted
 CAP 1995, III, T74, -0.65m
 MNIR Inv. 317606.
87. 4th-5th century
 AE ↓ 1.52g, 11.5mm
 CAP 2006, SI
 MNIR Inv. 315600.
88. 4th - 5th century
 AE ↑ 0.84, 13.4x12.6mm
 VIRTVS EXERCITI (?)
 CAP 1996, *passim*
 MNIR Inv. 317607.
89. 4th - 5th century
 AE 0.58g, 12.3x11mm
 Broken
 CAP 1996, *passim*
 MNIR Inv. 317608.
90. 4th - 5th century
 Fragments
 CAP 1970, BAS, -0.80m
 MNIR Inv. 317609.
91. 5th century
 AE 0.48g, 8.75x8mm
 Monogram
 CAP 1992, III, V73-1
 MNIR Inv. 317610.

92. 5th century
AE 0.47g, 10x7.5mm
Monogram
CAP 1996, III, *passim*
MNIR Inv. 317611.
93. 5th century
AE 0.68g, 8.5mm
Monogram in wreath (?)
CAP 1974, *passim*
MNIR Inv. 317612.
94. 5th century
AE 0.88g, 10mm
Monogram (?)
CAP 1992, Docks, S III
MNIR Inv. 317613.
95. 5th century
AE 0.62g, 9mm
Monogram/ cross in wreath
CAP 2002-2006, *passim*
MNIR Inv. 317614.
96. 5th century
AE 0.48g, 8.5mm, burned
Monogram
CAP 1996, III, *passim*.
MNIR Inv. 317615.
97. 5th century
AE ← 0.64g, 10.5x8.7mm
Monogram
CAP 1996, III, Ț-U73, -1.00m
MNIR Inv. 317616.
98. 5th century
AE 0.27g, 7mm
CAP 1992, Docks, S III
MNIR Inv. 317617.
99. 5th century
AE 0.49g, 17.8mm
Fragment
CAP 1992, Docks, S III
MNIR Inv. 317618.
100. 5th century
AE ↗ 1.44g, 12x10.7mm
CAP 2002-2006, *passim*
MNIR Inv. 317619.
101. 425-518
AE 0.40g, 8.5mm
CAP 2002-2006, *passim*
MNIR Inv. 317620.
102. 425-518
AE 0.27g, 6.5mm
CAP 1992, Docks, S III
MNIR Inv. 317621.
103. 425-518
AE 0.91g, 11mm
CAP 1974, *passim*
MNIR Inv. 317622.
104. ?
AE 0.3g
CAP 1987, Docks
MNIR Inv. 317623.

BIBLIOGRAPHY

CHELUȚĂ-GEORGESCU 1978 - N. Cheluță-Georgescu, *Considerații asupra tipului de locuințe feudale de la Capidava și elemente specifice amenajării interiorului lor*, Pontica 11(1978), p.211-222.

CHELUȚĂ-GEORGESCU 1979 - N. Cheluță-Georgescu, *Cercetări efectuate în necropola romană (Capidava 1978). Raport preliminar*, Materiale 13(1979), p.179-182.

COVACEF 1979 - Z. Covacef, *Raport preliminar privind cercetările arheologice din sectorul V al cetății Capidava (Campaniile din anii 1975, 1976 și 1978)*, Materiale 13(1979), p.175-178.

COVACEF 1980 - Z. Covacef, *Raport preliminar asupra cercetărilor arheologice din sectorul V al cetății Capidava (Campaniile din anii 1975, 1976, 1978 și 1979)*, Pontica 13(1980), p.254-274.

COVACEF 1983 - Z. Covacef, *Cercetările din sectorul V al cetății Capidava*, Materiale 15(1983), p.361-366.

COVACEF 1988-1989 - Z. Covacef, *Capidava în secolul VI e.n. Câteva observații pe baza cercetărilor din sectorul V al cetății*, Pontica 21-22(1988-1989), p.187-196.

COVACEF 1999 - Z. Covacef, *Ceramica de uz comun din sectorul de est al cetății Capidava. Sec. IV-VI*, Pontica 32(1999), p.137-186.

CUSTUREA 1986 - G. Custurea, *Unele aspecte privind penetrația monedei bizantine în Dobrogea în secolele VII-X*, Pontica 19(1986), p.273-277.

CUSTUREA 1995-1996 - G. Custurea, *Catalogul monedelor bizantine anonime descoperite la Capidava*, Pontica 28-29(1995-1996), p.301-307.

CUSTUREA 2005 - G. Custurea, *Date noi privind circulația monedei bizantine în Dobrogea (sec. V-VII)*, Pontica 37-38(2004-2005), p.491-536.

CUSTUREA, CLIANTE 2006 - G. Custurea, T. Cliante, *Monede bizantine descoperite în Dobrogea (sec. VI-VII)*, Pontica 39(2006), p.423-434.

CUSTUREA, VERTAN, TALMAȚCHI 1997 - G. Custurea, A. Vertan, G. Talmațchi, *Descoperiri monetare în Dobrogea. XI*, Pontica 30(1997), p.371-387.

CUSTUREA, VERTAN, TALMAȚCHI 1998 - G. Custurea, A. Vertan, G. Talmațchi, *Descoperiri monetare în Dobrogea. XII*, Pontica 31(1998), p.309-328.

CUSTUREA, VERTAN, TALMAȚCHI 1999 - G. Custurea, A. Vertan, G. Talmațchi, *Descoperiri monetare în Dobrogea. XIII*, Pontica, 32(1999), p.347-365.

DIACONU 1958 - P. Diaconu in Gr. Florescu, R. Florescu, P. Diaconu, *Capidava I. Monografie arheologică*, București, 1958.

FLORESCU 1927-1932 - Gr. Florescu, *Fouilles et recherches archéologiques à Calachioi (Capidava ?)*, Dacia 3-4(1927-1932), p.483-515.

FLORESCU 1935-1936 - Gr. Florescu, *Fouilles archéologiques de Capidava. 1928-1936*, Dacia, 5-6(1935-1936), p.351-386.

FLORESCU 1937-1940 - Gr. Florescu, *Fouilles archéologiques de Capidava. 1937-1940*, Dacia 7-8(1937-1940), p.345-351.

FLORESCU 1946 - Gr. Florescu, *Capidava în epoca migrațiilor*, RIR 16(1946), 4, p.325-343.

FLORESCU 1945-1947 - Gr. Florescu, *Fouilles archéologiques de Capidava. 1940-1945*, Dacia 11-12(1945-1947), p.209-220.

FLORESCU 1949 - Gr. Florescu, *Săpăturile arheologice de la Capidava (1948)*, Studii. Revistă de știință și filosofie, II, 1, 1949, p.130-131.

FLORESCU et alii. 1959 - Gr. Florescu, Ștefan Constantinescu, P. Diaconu, Mișu Davidescu, Radu Florescu, Gavrilă Simion, *Capidava. Raport asupra activității arheologice din 1956*, Materiale 5(1959), p.555-564.

FLORESCU, FLORESCU et alii. 1959 - Gr. Florescu, R. Florescu (Fl. Anastasiu, D. Vâlceanu, T. Mateescu, Dinu Theodorescu, P. Munteanu), *Săpăturile arheologice de la Capidava*, Materiale 6(1959), p.617-627.

FLORESCU, FLORESCU, CEACALOPOL 1961 - Gr. Florescu, R. Florescu, Gl. Ceacalopol, *Săpăturile arheologice de la Capidava (1958)*, Materiale 7(1961), p.571-581.

FLORESCU, FLORESCU, CEACALOPOL 1962 - Gr. Florescu, R. Florescu, Gl. Ceacalopol, *Săpăturile arheologice de la Capidava*, Materiale 8(1962), p.693-704.

FLORESCU 1961 - R. Florescu *Problema originii ceramicii românești și unele descoperiri recente de la Capidava*, în *Omagiu lui George Oprescu cu prilejul împlinirii a 80 ani*, București, 1961, p.199-210.

FLORESCU 1965 - R. Florescu, *Lucrul lemnului în așezarea feudală timpurie de la Capidava*, Revista de etnografie și folclor, 10, 5(1965), p.529-536.

FLORESCU 1967 - R. Florescu, *Date noi de la Capidava. În legătură cu cultura materială a zonei Dunării de Jos în perioada anterioară campaniilor lui Ioan Tzimisces*, *Apulum* 6(1967), p.259-268.

FLORESCU 1975 - R. Florescu, *Date noi cu privire la cronologia Capidavei romane târzii*, *Pontica* 8(1975), p.361-372.

FLORESCU, CHELUȚA-GEORGESCU 1974 - R. Florescu N. Cheluță-Georgescu, *Săpăturile de la Capidava*, *Pontica* 7(1974), p.417-435.

FLORESCU, CHELUȚA-GEORGESCU 1975 - R. Florescu, N. Cheluță-Georgescu, *Săpăturile de la Capidava*, *Pontica* 8(1975), p.77-85.

FLORESCU, COVACEF 1988-1989 - R. Florescu, Z. Covacef, *Stratigrafia Capidavei romane târzii și feudale timpurii*, *Pontica* 21-22(1988-1989), p.197-247.

FLORESCU, COVACEF, OPRIȘ et alii 1983-2006 - R. Florescu, Z. Covacef, I. Opriș et alii, *Capidava*, in CCA, 1983-1992 și 1993-2006.

GÂNDILĂ 2006-2007 - A. Gândilă, *Early Byzantine Capidava: the Numismatic Evidence*, *CN* 12-13(2006-2007) (sub tipar).

IONESCU-DOBROGIANU 1904 - M. Ionescu-Dobrogiianu, *Dobrogiia în pragul veacului al XX-lea*, Bucharest, 1904.

METCALF 1979 - D. M. Metcalf, *Coinage in South-Eastern Europe 820-1396*, London, 1979.

OBERLÄNDER-TÂRNOVEANU 2003 - E. Oberländer-Târnoveanu, *La monnaie dans l'espace rural byzantin des Balkans orientaux - un essai de synthèse au commencement du XXI^e siècle*, *Peuce* 1 (14)(2003), p341-412.

OBERLÄNDER-TÂRNOVEANU 1996 - E. Oberländer-Târnoveanu, *Monnaies byzantines des VII^e-X^e siècles découvertes a Silistra dans la collection de l'Académicien Péricle Papahagi consevées au Cabinet des Medailles du Musée National d'Histoire de Roumanie*, *CN* 7(1996), p.97-127.

OCHEȘEANU 2006 - R. Ocheșeanu (ed. G. Depeyrot), *Les monnaies en Dobroudja de 270 à 498 (Scythie Mineure, Mésie Seconde)*, Wetteren, 2006.

OCHEȘEANU, PAPUC 1976 - R. Ocheșeanu, Gh. Papuc, *Monede grecești, romane și bizantine descoperite în Dobrogea*, *Pontica* 9(1976), p.215-235.

OPRIȘ 2003 - I. Opriș, *Ceramica romană târzie și paleobizantină de la Capidava în contextul descoperirilor de la Dunărea de Jos (sec. IV-VI p. Chr)*, București, 2003.

PAPASIMA, VERTAN 1995-1996 - T. Papisima, A. Vertan, *Monede romane și bizantine inedite din colecția muzeului constănțean*, *Pontica* 28-29(1995-1996), p.271-278.

POENARU-BORDEA 1976-1980 - Gh. Poenaru-Bordea, *Cîteva monede romane și bizantine descoperite întîmplător la Capidava*, *BSNR*, 70-74(1976-1980), 124-128, p.247-251.

POENARU-BORDEA 1983-1985 - Gh. Poenaru-Bordea, *Alte cîteva monede descoperite la Capidava*, *BSNR* 77-79(1983-1985), 131-133, p.169-76.

POENARU-BORDEA, DONOIU 1981-1982 - Gh. Poenaru Bordea, I. Donoiu, *Contribuții la studiul pătrunderii monedelor bizantine în Dobrogea în secolele VII-X*, *BSNR* 75-76(1981-1982), 129-130, p.237-252.

POENARU BORDEA 2003 - Gh. Poenaru Bordea, in A. Suceveanu, M. Zahariade, F. Topoleanu, Gh. Poenaru-Bordea, *Halmyris I*, Cluj Napoca, 2003.

POPOIU 2001 - P. Popoiu, *Antropologia habitatului în Dobrogea*, București, 2001.

RĂDULESCU 1970 - A. Rădulescu, *Un document proto-roumain à Capidava*, *Dacia N.S.* 14(1970), p.311-323.

VERTAN, CUSTUREA 1980 - A. Vertan, G. Custurea, *Descoperiri monetare în Dobrogea. II*, *Pontica* 13(1980), p.347-366.

VERTAN, CUSTUREA 1981 - A. Vertan, G. Custurea, *Descoperiri monetare în Dobrogea. III*, *Pontica* 14(1981), p.331-356.

VERTAN, CUSTUREA 1982 - A. Vertan, G. Custurea, *Descoperiri monetare în Dobrogea. IV*, *Pontica* 15(1982), p.275-292.

VERTAN, CUSTUREA 1986 - A. Vertan, G. Custurea, *Descoperiri monetare în Dobrogea. VII*, Pontica 19(1986), p.297-308.

VERTAN, CUSTUREA 1988-1989 - A. Vertan, G. Custurea, *Descoperiri monetare în Dobrogea. VIII*, Pontica 21-22(1988-1989), p.369-390.

VERTAN, CUSTUREA 1992 - A. Vertan, G. Custurea, *Descoperiri monetare în Dobrogea. IX*, Pontica 25(1992), p.381-398.

VERTAN, CUSTUREA 1995-1996 - A. Vertan, G. Custurea, *Descoperiri monetare în Dobrogea. X*, Pontica 28-29(1995-1996), p.309-321.

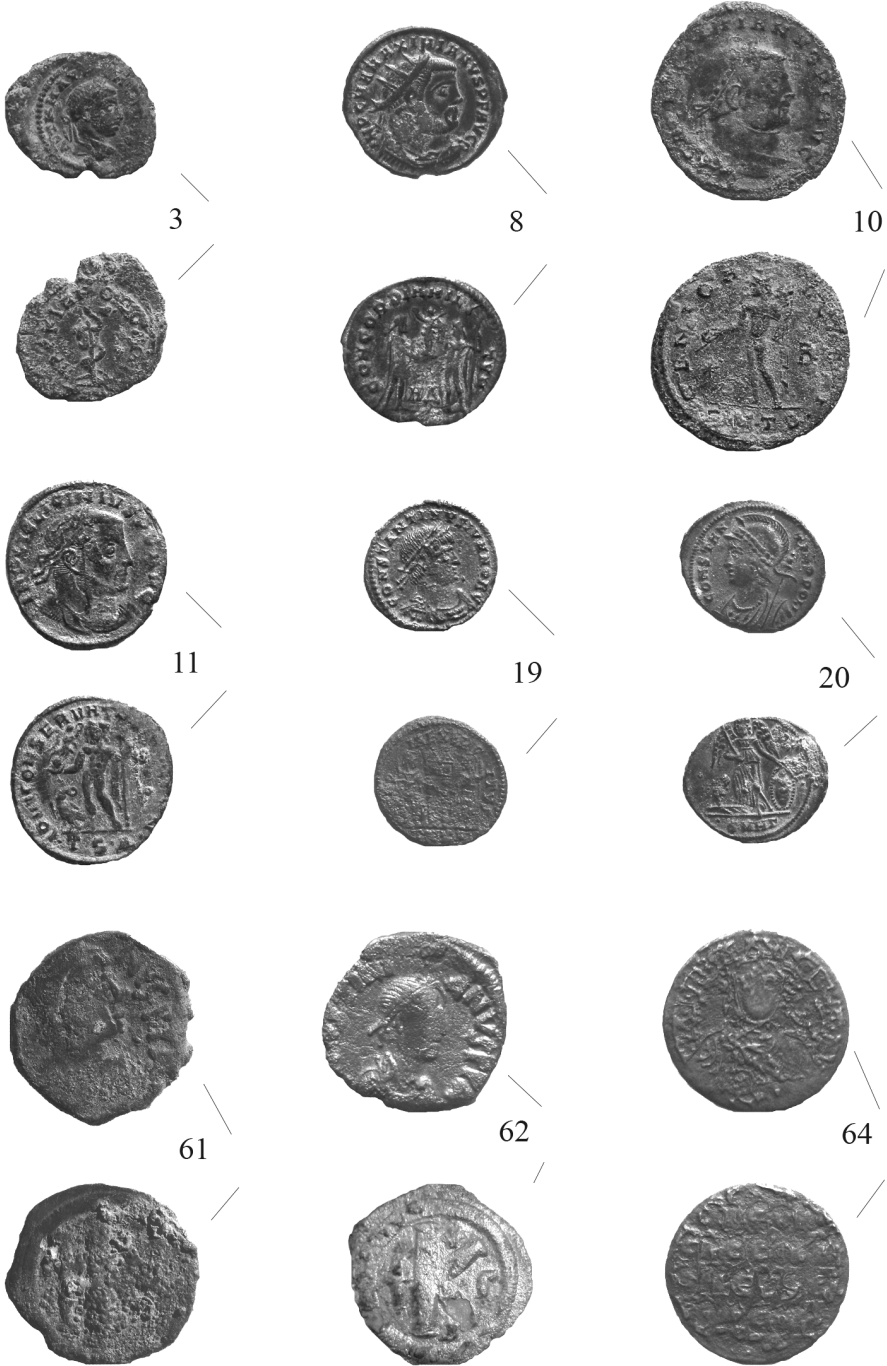


Plate I / Scale 1:1



Plate II / Scale 1:1